



THE AMERICAN UNIVERSITY IN CAIRO



# FACTBOOK

## 2015 - 2016

We are pleased to present the 2015-2016 American University in Cairo Factbook. This annual resource is a compilation of commonly requested data and information about our community and our facilities. We encourage you to read the introduction to each section prior to reading the individual tables and charts, as the introduction will provide you with the definitions you need to understand and correctly interpret the data.

Various university departments partnered with us in collecting and presenting this information. We wish to extend our sincere thanks to everyone who helped us compile the material included in this edition of AUC's Factbook, and a special thanks to any office whose name we may have inadvertently missed.

Vice Provost for Research	Office of Residence Life
Associate Provost for Strategic Initiatives	Office of Student Development
Center for Learning and Teaching	Office of Student Financial Affairs and Scholarships
Community Based Learning	Office of Sustainability
Dean of Undergraduate Studies	Office of the Chief Technology Officer
Engineering Services	Office of the Controller
Executive Education	Office of the President
Executive Vice President for Administration and Finance	Office of the Provost
Office of Facilities and Operations	School of Continuing Education
Libraries and Learning Technologies	Student Accounts
Office of Admissions	Technology Transfer Office
Office of Budget and Financial Planning	Undergraduate Research Office
Office of Communications	University Registrar
Office of Human Resources	Vice President for Advancement & Communications
Office of Online Student Services	Vice President for Student Affairs

We hope you find this Factbook to be a useful source of information. If you have questions, would like to provide us with your feedback, or if there is additional information that you would like to see included, please contact us at [dair@aucegypt.edu](mailto:dair@aucegypt.edu).

Iman Megahed, Executive Director  
Rasha Radwan, Director of Institutional Research  
Heba Fathelbab, Director of Assessment and Accreditation  
Alia Mitkees, Planning Manager  
Heba Attia, Research Analyst, Assessment and Accreditation  
Yasmeen Galal, Research Analyst, Institutional Research  
Nermin Wafa, Senior Administrative Assistant

More information on the Office of Data Analytics and Institutional Research (DAIR) is available at <http://www.aucegypt.edu/research/IR/Pages/default.aspx>.

This Factbook is available online at <http://www.aucegypt.edu/research/IR/Research/Pages/FactbookandProfile.aspx>.

*“In the twenty-first century, good policy-making is based on evidence. And evidence that is useful to policy-makers, whether in government, business or higher education, is built on comprehensive data and systematic analysis. AUC’s Office of Data Analytics and Institutional Research (DAIR) collects data and provides analysis for policy-makers across the University, supporting decisions on enrollment management, curriculum assessment, budget planning, human resources, capital investment and much, much more. This Factbook reflects DAIR’s emphasis on providing increasingly precise, instructive and useful information to assist in understanding, and improving, how AUC works and it is a credit to the University’s commitment to managing its resources with integrity, accountability and sustainability”.*

Lisa Anderson

President, The American University in Cairo

## TABLE OF CONTENTS

<b>Mission, History and Organization .....</b>	<b>4</b>
UNIVERSITY MISSION .....	5
A BRIEF HISTORY OF AUC .....	5
SCHOOLS AND ACADEMIC PROGRAMS .....	8
BOARD OF TRUSTEES.....	12
ORGANIZATIONAL CHART .....	14
UNIVERSITY SENATE .....	15
STUDENT GOVERNMENT .....	15
ACCREDITATION .....	16
<b>Students .....</b>	<b>17</b>
ADMISSIONS AND FIRST-YEAR UNDERGRADUATE ENROLLMENT.....	20
ENROLLMENT SUMMARIES .....	22
UNDERGRADUATE ENROLLMENT.....	25
GRADUATE ENROLLMENT .....	31
GRADUATION PATTERNS.....	37
STUDENT ACTIVITIES .....	40
STUDY ABROAD PROGRAMS .....	42
CONTINUING AND PROFESSIONAL EDUCATION .....	43
<b>Faculty .....</b>	<b>45</b>
FULL-TIME FACULTY .....	47
INSTRUCTIONAL FACULTY .....	48
FULL-TIME EQUIVALENT FACULTY.....	53
<b>Teaching and Academic Support .....</b>	<b>54</b>
TEACHING .....	55
LIBRARIES AND LEARNING TECHNOLOGIES (LLT) .....	56
INFORMATION TECHNOLOGY SERVICES .....	57
COMMUNITY-BASED LEARNING.....	58
UNDERGRADUATE RESEARCH .....	58
<b>Research.....</b>	<b>59</b>
RESEARCH CENTERS .....	60
SPONSORED RESEARCH .....	63
TECHNOLOGY TRANSFER.....	64
<b>Alumni .....</b>	<b>65</b>
ACTIVE ALUMNI .....	67
GEOGRAPHICAL DISTRIBUTION .....	67
ALUMNI CONTRIBUTIONS .....	67
<b>Finances.....</b>	<b>68</b>
OPERATING BUDGET .....	72
UNDERGRADUATE AND GRADUATE TUITION .....	74
UNDERGRADUATE FINANCIAL AID .....	74
FUNDRAISING .....	75
<b>Campus Space, Facilities, and Services .....</b>	<b>77</b>
UTILITY USAGE FOR THE NEW CAIRO CAMPUS.....	78
CAMPUS SUSTAINABILITY.....	79
STUDENT HOUSING CAPACITY .....	80
CAMPUS MAP .....	81

# **Mission, History and Organization**

## UNIVERSITY MISSION

The American University in Cairo (AUC) is a premier English-language institution of higher learning. The University is committed to teaching and research of the highest caliber, and offers exceptional liberal arts and professional education in a cross-cultural environment. AUC builds a culture of leadership, lifelong learning, continuing education and service among its graduates, and is dedicated to making significant contributions to Egypt and the international community in diverse fields. Chartered and accredited in the United States and Egypt, it is an independent, not-for-profit, equal-opportunity institution. AUC upholds the principles of academic freedom and is dedicated to excellence.

## A BRIEF HISTORY OF AUC

The American University in Cairo (AUC) is an independent, not-for-profit institution offering English language, American-style liberal arts and professional undergraduate and graduate education to students from Egypt, the region, and around the world. In Egypt, AUC operates within the framework of a 1975 protocol with the government of Egypt; this protocol is based on a 1962 cultural relations agreement between the Egyptian and the U.S. governments. In the United States, the University is licensed to grant degrees and is incorporated within the State of Delaware.

AUC was founded in 1919 as both a preparatory school and a university by a group of Americans devoted to education and service in the Middle East. Its founding president, Dr. Charles Watson, wanted to create an English-language university based on high standards of conduct and scholarship and to contribute to the intellectual growth, discipline, and character of the future leaders of Egypt and the region. At first an institution only for males, AUC enrolled its first female student in 1928, the same year the first university class graduated. In 1950, AUC added its first graduate programs to its ongoing bachelor of arts, bachelor of sciences, graduate diploma, and continuing education programs, and in 1951, phased out the preparatory school program. By the mid-1970s, the University offered a broad range of liberal arts and sciences programs. In the following years, the University added bachelors, masters, and diploma programs in engineering, management, computer science, journalism and mass communication and sciences programs, as well as establishing a number of research centers in strategic areas, including business, the social sciences, philanthropy and civic engagement, and science and technology. AUC now offers 36 bachelor's degrees, 44 master's degrees, and 2 doctoral degrees in applied sciences and engineering in addition to a wide range of graduate diplomas in five schools: Business, Global Affairs and Public Policy, Humanities and Social Sciences, Sciences and Engineering, and the Graduate School of Education.

Academic program enrollments have grown to over 5,500 undergraduates with an additional 1,178 graduate students (Fall 2015). Simultaneously, adult education has also expanded and now serves more than 19,000 students each year in non-credit courses and contracted training programs offered through the School of Continuing Education. Ninety-four percent of AUC students are Egyptian, with the remaining 6% comprised of nationalities from around the world.

Long considered a leader in higher education in the region, the University has sought national, regional, and international accreditation as a means of fostering excellence in governance and academics. In addition to its accreditation by the Middle States Commission on Higher Education, AUC is the first university in Egypt to receive accreditation from Egypt's new National Authority for Quality Assurance and Accreditation in Education (NAQAAE) at the institutional level, and the School of Sciences and Engineering at the school level. In addition, many of AUC's academic programs have received specialized accreditation.

For most of its nearly 100-year history, AUC was located on a nine-acre campus in the heart of downtown Cairo, a city of more than 18 million people and the largest urban area in the Middle East and North Africa. In 1997, the University decided to relocate the campus to the planned community of New Cairo and use the opportunity of building an entirely new campus to create a "City of Learning", designed to embody the University's liberal arts tradition and provide room for growth. The University launched a very successful \$100 million

comprehensive capital campaign in 2003 to raise construction funds as well as additional monies for scholarships, professorships, and other strategic areas. In 2008, the University moved its academic programs from its downtown campus to a purpose-built 260-acre campus in the Cairo suburbs. The downtown campus was refurbished to secure the growing continuing and professional education programs as well as promote cultural and public service programs more widely.

Since its move to the new campus, the University has explored ways to make best use of the beautiful, state of the art facilities for academic and co-curricular programs, students, faculty, the staff, and the community. Political, economic, and social upheaval in Egypt and the region following the uprising of 2011 greatly affected the entire AUC community but also reinforced the importance of AUC's mission and the role it plays in the region.

## Presidents

Thomas E. Thomason serves as interim president.

Lisa Anderson, 2011-2015

David D. Arnold, 2003-2010

John D. Gerhart, 1998-2003

Donald McDonald, 1990-1997

Richard F. Pedersen, 1977-1990

Cecil K. Byrd, 1974-1977

Christopher Thoron, 1969-1974

Thomas A. Bartlett, 1963-1969

Raymond F. McLain, 1954-1963

John S. Badeau, 1944-1953

Charles Watson, 1919-1944

## Timeline of Highlights in AUC's History

- 1912 Charles Watson completed a report outlining the vision for AUC.
- 1919 AUC was officially incorporated in Washington, D.C.
- 1920 First 142 students began classes equivalent to the final two years of high school. Student Union was formed.
- 1921 School of Oriental Studies was established.
- 1923 First commencement was held.
- 1924 Degrees were recognized by the New York State Board of Regents as equivalent to junior college degrees; Division of Extension (forerunner to the School of Continuing Education) was established; first campus newspaper, AUC Review, was issued.
- 1925 First university-level courses were offered; Ruth Litt donated \$100,000 for an auditorium to be named after her grandfather, William Dana Ewart.
- 1926 Old Boys Club was created for alumni.
- 1927 AUC offers four years of secondary school and four of college.
- 1928 First university-level bachelor's degrees were awarded to three students; AUC welcomed first female student Eva Habib el Masri.
- 1929 Hill family started AUC's first endowment fund with \$450,000.
- 1931 Old Boys Club developed into Alumni Association; Gillespie family donated \$65,000 to build Oriental Hall.
- 1937 Om Kalthum performed in Ewart Hall.
- 1940 King Abdullah of Jordan visited AUC.
- 1941 AUC hosted concerts in Ewart Hall for allied soldiers in Egypt.
- 1942 AUC students petitioned Ministry of War to allow an instructor to teach them military formations, which soon replaced acrobatics and team sports.
- 1950 First graduate degree was awarded.
- 1951 Last preparatory class graduated, making AUC strictly a university-level institution.
- 1952 Helen Keller visited AUC.

- 1953 Hill House was formally dedicated as first student dormitory on campus; Social Research Center was established.
- 1954 Egyptian presidents Mohammed Naguib and Gamal Abdul Nasser attended AUC's Arabic Language Day Convocation.
- 1956 English Language Institute was opened; School of Oriental Studies became the Center for Arabic Studies; AUC obtained Creswell Collection.
- 1959 Hill House was rededicated as a library.
- 1960 AUC Press was established.
- 1961 AUC's name was changed from "at" Cairo to "in" Cairo.
- 1964 Buildings were purchased from the Greek community; Falaki building built for use as a student dormitory.
- 1966 Science Building construction was completed.
- 1967 Center for Arabic Study Abroad was opened; the government of Egypt sequestered AUC.
- 1972 AUC Press obtained exclusive English language rights to the works of Naguib Mahfouz.
- 1974 Ministry of Higher Education recognized AUC degrees as equivalent to those offered by Egyptian universities. Sports program won representation in the National Universities Sports Union.
- 1975 The government of Egypt relinquished control of AUC; a protocol between AUC's Board of Trustees and the government of Egypt governed its operations.
- 1978 AUC Press published the first Naguib Mahfouz novel in English.
- 1979 Desert Development Center was established.
- 1982 New library on the Greek Campus was completed; the Middle States Commission on Higher Education granted AUC full accreditation.
- 1985 Opening of Egypt's first university bookstore
- 1988 Mahfouz won Nobel Prize. AUC Press was his English-language publisher (with nine of his novels in print) and worldwide agent.
- 1989 Abdul Latif Jameel Building for Middle East Management Studies was inaugurated; core curriculum was introduced; Model United Nations was started.
- 1990 Model Arab League was started.
- 1991 AUC opened Zamalek building.
- 1992 Rare books library was inaugurated.
- 1993 University Senate was established.
- 1994 AUC celebrated its 75th anniversary; AUC hosted the Fifth International Conference on Population and Development held under the auspices of the United Nations.
- 1995 Grand Mufti Sheikh Muhammed Tantawi and Pope Shenouda III spoke at AUC; AUC Professor Kent Weeks rediscovered KV5 in Valley of the Kings.
- 1996 Naguib Mahfouz Medal for Literature was established.
- 1997 AUC purchased land in New Cairo.
- 1998 U.S. First Lady Hillary Clinton spoke in Ewart Hall. AUC receives reaffirmation of accreditation From the Middle States Commission on Higher Education.
- 2000 Queen Rania Al Abdullah '91 visited AUC. Distinguished guests in first years of the century Included Jimmy Carter, Kofi Annan, Condoleezza Rice, and Nobel laureates Ahmed Zewail and Mohamed ElBaradei.
- 2003 New Cairo Campus design was completed and the cornerstone laid by Egypt's First Lady Suzanne Mubarak '77, '82.
- 2004 AUC established Leadership for Education and Development scholarship program. AUC signed construction contract for New Cairo Campus.
- 2007 AUC Press published its 1,000th book.
- 2008 First day of class was held on the purpose-built, 260-acre New Cairo Campus. AUC received reaffirmation of accreditation from the Middle States Commission on Higher Education.
- 2009 Egypt's First Lady Suzanne Mubarak '77, '82 inaugurated New Cairo Campus. AUC celebrated its 90th anniversary.



- 2010 The University introduced its first PhD program, in the School of Sciences and Engineering. AUC became the first university in Egypt to be accredited by Egypt's National Authority for Quality Assurance and Accreditation of Education (NAQAAE).
- 2011 January 25<sup>th</sup> Revolution. Demonstrations occurred near AUC's Tahrir campus but the university completed all academic programs. Nobel laureate Joseph Stiglitz lectured at AUC.
- 2012 AUC became the first institution of higher education in the Middle East and North Africa to conduct a comprehensive study measuring its carbon footprint. Distinguished guests included Nobel laureate and former US president Jimmy Carter and former prime minister of Norway Gro Harlem Brundtland.
- 2013 AUC leased Greek Campus to create first technology park in downtown Cairo and licensed four patent-pending technologies to create Egypt's first university spin-off company.
- 2014 AUC awarded first PhD, in engineering, to Yosra El Maghraby. The School of Business established Egypt's first university-based business incubator, AUC Venture Labs, to commercialize technologies and innovations developed by Egypt-based startups.
- 2015 AUC wins accolades for its campus sustainability programs; its public policy and administration programs are among the first outside the US to be accredited by NASPAA; at 345, its QS global rankings put it among the top universities world-wide.

## **SCHOOLS AND ACADEMIC PROGRAMS**

Through its six schools and the Academy of Liberal Arts, the university offers 36 undergraduate majors and 46 graduate programs, including two doctoral programs. The schools serve 6,642 students, and provide educational opportunities to enhance professional and job skills of more than 16,000 non-degree students.

### **Academy of Liberal Arts**

The Academy of Liberal Arts (ALA) is the cornerstone of liberal education at AUC. Established July 1, 2013, the ALA is comprised of three departments: the Department of Arabic Language Instruction (ALI), the Department of English Language Instruction (ELI) and the Department of Rhetoric and Composition (RHET). The academy's more than 100 dedicated faculty members provide foundational language, writing, critical thinking and cross-disciplinary courses for AUC undergraduate students, including cornerstone classes in the new Freshman Program of the Core Curriculum, as well as providing intensive Arabic and English-language instruction for a wider community, including graduate and international students.

### **Graduate School of Education**

The Graduate School of Education (GSE) contributes to education reform in Egypt and the region by providing the theoretical and applied components needed to build the capacity of professionals and policymakers in the education system.

#### **Graduate Programs**

Educational Leadership (MA)

International and Comparative Education (MA)

### **School of Business**

The School of Business has a focus on professional programs and is widely recognized for its high quality programs. The school prides itself on building these programs on a solid liberal arts foundation, which provides graduates with the background needed to understand the real world and allows them to bring this perspective into their professional lives.

#### **Undergraduate Programs**

Accounting (BAC)

Economics (BA)

Business Administration (BBA)

Management of Information and Communication Technology (BBA)

**Graduate Programs**

Economics in International Development (MA)  
Economics (MA)  
Business Administration (MBA)  
Executive Master of Business Administration (EMBA)  
Finance (MS)

**School of Continuing Education**

The School of Continuing Education (SCE) provides certificate programs, noncredit semester-long, courses and customized courses of variable length to fulfill the continuing educational needs of individuals and organizations in Egypt and the Middle East. SCE's regularly scheduled courses and certificate programs are offered in both Tahrir Square and New Cairo. Customized courses may be conducted on site at the organization's facilities. Ten laboratories allow for state-of-the-art computer and English-language training at AUC's Tahrir Campus. Special summer youth programs provide academic enrichment and skill development for children.

**School of Humanities and Social Sciences**

The School of Humanities and Social Sciences (HUSS) focuses on enhancing its students' ability to analyze opinions and assumptions, become more aware of the past and more open to new ways of thinking, and develop a capacity for critical thinking and creative approaches to problem-solving.

**Undergraduate Programs**

Anthropology (BA)  
Arabic Studies (BA)  
Egyptology (BA)  
English and Comparative Literature (BA)  
Film (BA)  
Graphic Design (BA)  
History (BA)  
Honors Program History (BA)  
Music Technology (BA)  
Performance (BMA)  
Philosophy (BA)  
Political Science (BA)  
Honors Program in Political Science (BA)  
Psychology (BA)  
Sociology (BA)  
Theatre (BA)  
Visual Arts (BA)

**Graduate Programs**

Arabic Studies (MA)  
Community Psychology (MA)  
Comparative Middle East Politics & Society (MA)  
Counseling Psychology (MA)  
Egyptology and Coptology (MA)  
English and Comparative Literature (MA)  
Philosophy (MA)  
Political Science (MA)  
Sociology - Anthropology (MA)  
Teaching Arabic as a Foreign Language (MA)  
Teaching English to Speakers of Other Languages (MA)

### **School of Global Affairs and Public Policy**

The School of Global Affairs and Public Policy (GAPP) prepares its graduates to take the lead in shaping the future of their nations and the world at large, with a strong belief in the interaction of international and public affairs, an unwavering commitment to ethics and the rule of law, and a recognition of the unique role the media plays in shaping public policy.

#### **Undergraduate Programs**

Communication and Media Arts (BA)  
Integrated Marketing Communication (BA)  
Journalism (BA)  
Middle East Studies (BA)  
Multimedia Journalism (BA)

#### **Graduate Programs**

Gender and Women's Studies in the Middle East/North Africa (MA)  
Journalism and Mass Communication (MA)  
Middle East Studies (MA)  
Migration and Refugee Studies (MA)  
Television and Digital Journalism (MA)  
Global Affairs (MGA)  
International and Comparative Law (LLM)  
International Human Rights Law (MA)  
Public Administration (MPA)  
Public Policy (MPP)  
Political Science (BA) and International Human Rights Law (MA)<sup>1</sup>  
Development Practice (MDP) option BSc/CENG-MPA<sup>2</sup>

### **School of Sciences and Engineering**

The School of Sciences and Engineering (SSE) offers foundational knowledge in the fields of science and engineering. Students are educated to acquire an appreciation of their responsibilities to society, and to prepare themselves for successful careers and leadership. The school provides an environment in which students develop their critical thinking capabilities, problem solving skills, communication skills and proficiency in the tools of learning.

#### **Undergraduate Programs**

Actuarial Science (BS)  
Architectural Engineering (BS)  
Biology (BS)  
Chemistry (BS)  
Computer Engineering (BS)  
Computer Science (BS)  
Construction Engineering (BS)  
Electronics and Communication Engineering (BS)  
Mathematics (BS)  
Mechanical Engineering (BS)  
Petroleum Engineering (BS)  
Physics (BS)

---

<sup>1</sup> Dual degree program, combining a BA in Political Science and an MA in International Human Rights Law

<sup>2</sup> Dual degree program, jointly administered by the Department of Public Policy and Administration in the School of Public Affairs and the School of Sciences and Engineering. Students enrolled in the School of Science and Engineering may apply to complete the MPA on an accelerated basis in conjunction with completion of the BS in engineering. At present, this option is open only to students completing the BS in Construction Engineering.

**Graduate Programs**

Biotechnology (MS)  
Chemistry (MS)  
Computer Science (MS)  
Construction Engineering (MS)  
Electronics and Communication Engineering (MS)  
Environmental Engineering (MS)  
Mechanical Engineering (MS)  
Nanotechnology (MS)  
Physics (MS)  
Robotics, Control and Smart Systems (MS)  
Sustainable Development (MS)  
Computing (M. Comp.)  
Construction Engineering (MEng)  
Electronics and Communication Engineering (MEng)  
Environmental Systems Design (MEng)  
Mechanical Engineering (MEng)  
Robotics, Control and Smart Systems (MEng)  
Development Practice (MDP) option BSc/CENG-MPA<sup>3</sup>  
Applied Sciences (PhD)  
Engineering (PhD)

---

<sup>3</sup> Dual degree program, jointly administered by the Department of Public Policy and Administration in the School of Public Affairs and the School of Sciences and Engineering. Students enrolled in the School of Science and Engineering may apply to complete the MPA on an accelerated basis in conjunction with completion of the BS in engineering. At present, this option is open only to students completing the BS in Construction Engineering.

## BOARD OF TRUSTEES

The Board of Trustees is AUC's ultimate governing authority and is responsible for the overall direction of the University. The Board appoints the president, who leads and manages the university; approves AUC's mission and vision, budgets, campus plans, changes in institutional and academic policies, and campus master plans; supervises the university's endowment; and sets an example of generous financial support. They serve without compensation and dedicate their efforts and their resources to supporting the University. More information on AUC's Board of Trustees is available at <http://www.aucegypt.edu/about/BOT/Pages/default.aspx>.

### Officers

Mr. Richard A. Bartlett, Chair  
Mr. Moataz Al Alfi, Vice Chair  
Dr. Barbara Brown, Secretary  
Mr. James D. Bond, Treasurer

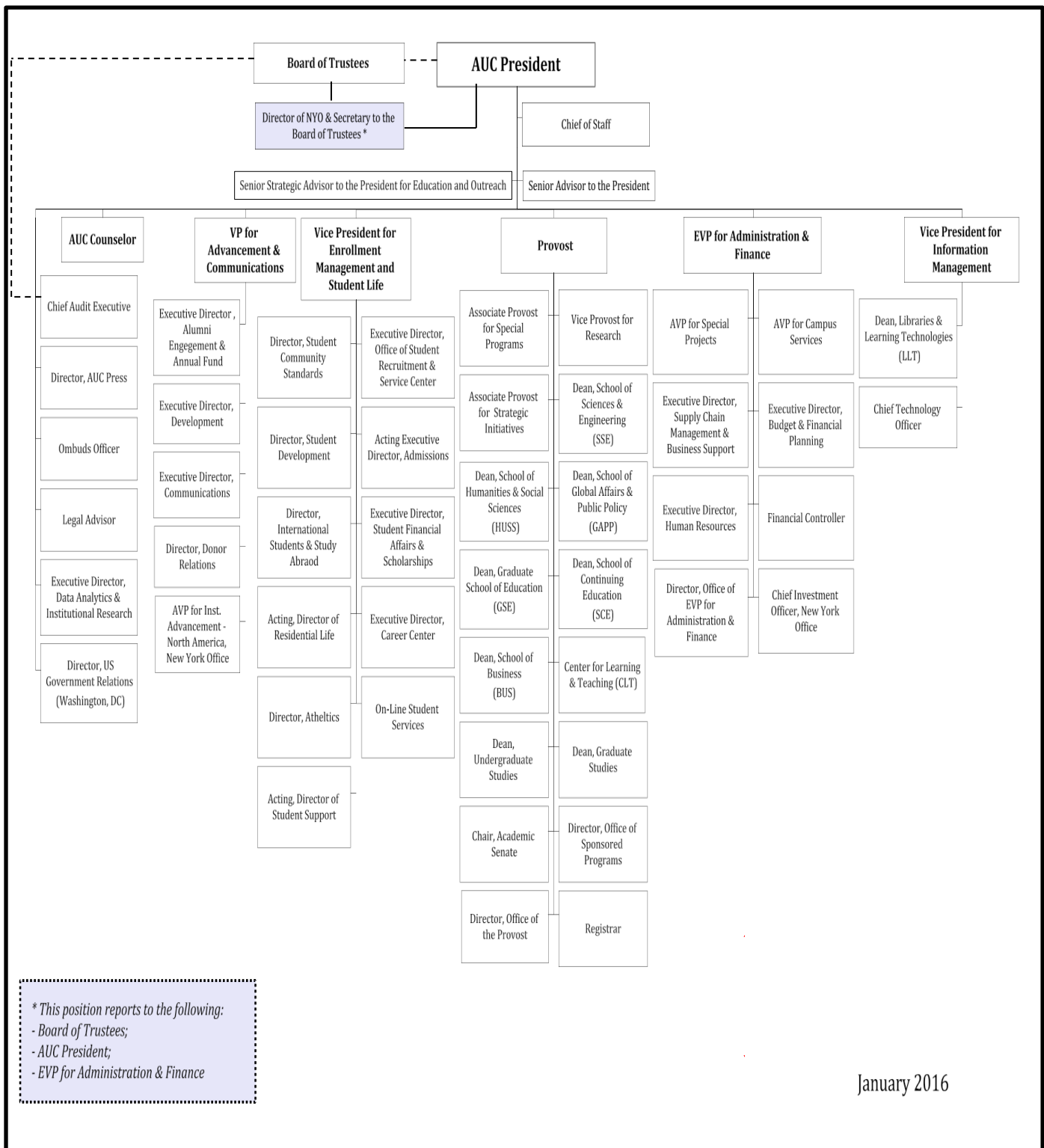
### Trustees

Mr. Moataz Al-Alfi	Chairman, Americana Group
Mr. Hisham Ezz Al-Arab	Chairman and Managing Director, Commercial International Bank (CIB)
Ambassador Yousef Al-Otaiba	Ambassador of the United Arab Emirates to the United States of America
Ms. Basma Alireza	Vice President of Corporate Affairs, Rezayat Europe Ltd.
Dr. Lisa Anderson	President, The American University in Cairo
Dr. Ziad Ahmed Bahaa-Eldin	Senior Legal Advisor, The Central Bank of Egypt
Mr. Paul H. Bartlett	Partner, Rho Ventures
Mr. Richard A. Bartlett	Managing Director, Resource Holdings, Ltd.
Dr. Eva Bellin	Myra and Robert Kraft Professor of Arab Politics, Brandeis University
Mr. James D. Bond	President, Bond & Associates
Dr. Barbara Brown	President, The Louise H. and David S. Ingalls Foundation
Ms. Lisa Brown	VP and General Counsel, Georgetown University
Dr. Nathan Brown	Professor of Political Science and International Affairs, George Washington University
Mr. Richard M. Cashin	Managing Partner, One Equity Partners
Mr. Hisham Hussein El-Khazindar	Co-Founder and Managing Director, Qalaa Holdings
Dr. Rana El-Kaliouby	Chief Strategy and Science Officer at Affective
Dr. Atef H. Eltoukhy	Chairman, Aurum Capital Management
Mr. Ali Faramaway	Corporate VP and President of Middle East & Africa, Microsoft
Mr. C. Stedman Garber	Retired Chief Executive Officer, Global Santa Fe Corporation
Mr. Peter Giblin	Chairman, The Giblin Company
Ms. Katherine Nouri Hughes	Writer
Dr. Mohamed Ibrahim	Chairman and Founder, Mo Ibrahim Foundation
Mr. Robert W. Kasten, Jr.	President, Kasten & Company
Dr. Farhad Kazemi	Professor Emeritus of Politics and Middle Eastern Studies, New York University
Ambassador Daniel C. Kurtzer	Lecturer and Professor in Middle East Policy Studies, Woodrow Wilson School of Public and International Affairs, Princeton University
Mr. Paul J. Lawler	Vice President for Investments and Chief Investment Officer (ret.), The W.K. Kellogg Foundation and Trust
Mr. Philip Maritz	Managing Director, Broadreach Capital Management
Ms. Dina Habib Powell	Global Head of Corporate Engagement, Goldman, Sachs & Co.
Mr. Bill Quandt	Edward R. Stettinius Professor of Government & Foreign Affairs, University of Virginia
Ms. Hosna Mohamed Rachid	Chairperson, Rachid Mashreq Group, Unilever Mashreq
Mr. Thomas E. Thomason	Chief Executive Officer, Egyptian Refining Company
Dr. David A. Tirrell	Ross-McCollum – William H. Corcoran Professor of Chemistry and Chemical, Engineering, California Institute of Technology
Dr. Sadek Wahba	Former Managing Director, Morgan Stanley
Dr. Ahmed H. Zewail	Nobel Laureate, Linus Pauling Chair Professor of Chemistry and Professor of Physics, California Institute of Technology

## **Advisory Trustees**

Dr. Esmat Abdel Meguid  
Dr. Alexander Aldrich  
Dr. Thomas A. Bartlett  
Mr. Paul I. Corddry  
Mrs. Mary Cross  
Mrs. Elizabeth S. Driscoll  
Dr. Nabil Elaraby  
Dr. Mohamed ElBaradei  
Mr. Paul B. Hannon  
Mr. John R. Hayes  
Dr. Elias K. Hebeka  
Mr. B. Boyd Hight  
Mr. Lawrence H. Hyde  
Mrs. Suad Al-Husseini Juffali  
Mr. Weldon D. Kruger  
Mr. Arthur Lindenauer  
Mr. Troland S. Link  
Mr. Bruce L. Ludwig  
Dr. William A. Rugh  
Dr. Willam K. Simpson  
Ambassador Frank G. Wisner

## ORGANIZATIONAL CHART



January 2016

## UNIVERSITY SENATE

The Senate is the representative council of the university faculty, with the participation of students, staff, and administration. It ensures faculty participation in governance and in the discussion of issues important to the university community. It aims to facilitate communication among University constituencies and to foster mutual respect and cooperation among the faculty of the various departments and disciplines, students, and staff. The Senate provides a forum for considering matters directly related to the wellbeing of the AUC community. Its resolutions are transmitted to the president of the University for consideration and appropriate action.

### **Standing and Ad Hoc Committees**

- Academic Affairs
- Curriculum
- Faculty Affairs
- Students Affairs
- Administrative Affairs
- Budget Review
- Grievance Policy and Procedure

## STUDENT GOVERNMENT

The student government at The American University in Cairo is divided into three branches: an executive branch, represented by the Student Union; a legislative branch, represented by the Student Senate; and a judicial branch, represented by the Student Court.

The Student Union (SU) is the highest executive body and authority of the General Assembly and operates in accordance with the Constitution of the General Assembly of the student body. The SU represents both full-time and part-time students at the university and serves to unite and develop the student body. Members must be enrolled at AUC as full-time students, with good academic and social standing.

The Student Senate is the highest legislative authority and is the link between the SU and the General Assembly. The Student Senate is responsible for overseeing the performance of the SU and initiating legislature for the General Assembly in accordance with the Constitution. SS members are representatives from various constituencies of the student body: undergraduate students from different majors as well as ELI and undeclared students, graduate students and international students. The work of the Senate is divided among several committees: Legislative, Monitoring, External Affairs, Public Opinion, Clubs and Conferences, Large Scale Events, Press Board, Sports, and the Graduate Student Senate Ad-Hoc Committee.

The Student Court is a monitoring body, run by and for students. It addresses specific student concerns, and members are elected on an annual basis. The Student Court ensures that the SU and all clubs abide by the respective independent constitutions, as well as general University policy. The Court also ensures that SU members and club officers fulfill their responsibilities in a transparent and competent manner and monitors the presidential elections, so as to ensure an objective and impartial electoral process. On an individual level, the Student Court hears complaints of students against fellow students and tries to resolve conflicts by acting as a peer mediator. The Student Court is represented in the Student Disciplinary Committee, which addresses students' misconduct, both in and out of class. The committee also monitors compliance with the University Drug and Alcohol Policy and works in cooperation with the University's Academic Integrity Committee.

More information on student government at AUC is available at <http://www.aucegypt.edu/studentlife/involve/gov/Pages/Home.aspx>.



## ACCREDITATION

Accreditation is a mark of excellence indicating endorsement by peer reviewers. Accreditation is critically important to universities, especially in a global context where prospective students, faculty members and employers view it as a measure of academic excellence and institutional quality. The self-study process, which involves participants from every unit of the institution, is an opportunity to examine where the university and/or its programs stand in terms of best practices, focus efforts on areas that need enhancement and changes, and define new challenges in academic endeavors and organizational matters. More information on AUC's accreditation is available at <http://www.aucegypt.edu/accreditation/Pages/default.aspx>.

Accreditation of University	
Global	Local
<a href="http://www.msche.edu/">Middle States Commission on Higher Education (MSCHE)</a>	National Authority for Quality Assurance and Accreditation in Education (NAQAAE) (Egypt)

Accreditation of Schools and Programs	
Unit	Accrediting Organization
<b>Academy of Liberal Arts</b>	
Intensive English Language Program and English 100	Commission on English Language Program Accreditation (CEA)
<b>School of Business</b>	<b>EFMD Quality Improvement System (EQUIS)</b>
Department of Management	<a href="http://www.naqaae.org/">National Authority for Quality Assurance and Accreditation in Education (NAQAAE)</a> (Egypt)
Accounting, BAC	<a href="http://www.aacsb.org/">Association for the Advancement of Collegiate Schools of Business (AACSB)</a>
Business Administration, BBA	
Business Administration, MBA	
Executive Masters of Business Administration, EMBA	
Management of Information and Communication Technology, BS	
Business Administration, MBA	<a href="http://www.amba.org/">Association of MBAs (AMBA)</a>
Executive Masters of Business Administration, EMBA	
Executive Education	<a href="http://www.accet.org/">Accrediting Council for Continuing Education and Training (ACCET)</a>
<b>School of Continuing Education</b>	<a href="http://www.iaceti.org/">International Association for Continuing Education and Training (IACET)</a>
<b>School of Science and Engineering</b>	<a href="http://www.naqaae.org/">National Authority for Quality Assurance and Accreditation in Education (NAQAAE)</a> (Egypt)
Architectural Engineering, BS	<a href="http://www.unesco-uis.org/">UNESCO-UIS Validation Council for Architectural Education</a>
Chemistry, BS	<a href="http://www.csc.org/">Canadian Society for Chemistry (CSC)</a>
Computer Science, BS	<a href="http://www.abet.org/">Computing Accreditation Commission of ABET</a>
Construction Engineering, BS	<a href="http://www.abet.org/">Engineering Accreditation Commission of ABET</a>
Electronics Engineering, BS	
Mechanical Engineering, BS	
<b>School of Global Affairs and Public Policy</b>	
Public Administration	NASPAA Accreditation
Master in Public Policy	

# Students

## STUDENTS

### Data Sources

Unless otherwise noted, all data used for the student section of this book are from Banner. Enrollment summaries include headcounts and full-time equivalency (FTE) totals for all students actively enrolled at AUC as of Fall Census, October 1, 2014. Degree summaries include degrees awarded during an entire academic year.

### Other Sources

**Athletics:** Office of Athletics

**Student Organizations:** Office of Student Development

**Study Abroad:** International Programs Office

### Definitions

**Academic Year (Degrees Awarded):** Includes four semesters in the following order: Fall, Winter, Spring, Summer. Students who complete their degree requirements during the Summer or Winter semesters graduate the following February.

#### Career Level:

**Undergraduate:** Students enrolled as freshman, sophomore, junior, or senior students

**Graduate:** Students enrolled in Master's or Doctoral programs

**Special Status:** Students who are not enrolled in a university degree program

**Class Level:** Class level is determined by the number of credit hours successfully completed by the student.

**Freshman:** An undergraduate student who has earned less than 30 credit hours

**Sophomore:** An undergraduate student who has earned at least 30 and less than 60 credit hours.

**Junior:** An undergraduate student who has earned at least 60 and less than 90 credit hours.

**Senior:** An undergraduate student who has earned at least 90 credit hours.

**Completion Rate:** The percentage of degree-seeking freshman (not including transfers or re-admits) that were enrolled for the first time in the fall and completed requirements and graduated within a specific time period. This report looks at four-year and six-year completion rates.

**Degree-Seeking Student:** A student enrolled in courses for academic credit and recognized by AUC as seeking a degree.

**Duplicated Student Headcount:** A student is counted once in each of the programs in which he/she is enrolled.

**Exchange Program:** Students pay AUC tuition fees and spend a semester or a year abroad.

**First-Time, First-Year:** A degree-seeking undergraduate enrolled for the first time at AUC who is not transferring credits from any other institution.

**Full-time Student:** A student who is enrolled in at least 12 credits at the undergraduate level or at least nine credits at the graduate level.

**Full-time Equivalent (FTE):** Each full-time student is counted once. Part-time students are counted based on the percentage of full-time credit hours attempted.

**Gender:** The sex, either male (M) or female (F) of the student.

**Headcount:** The number of students, regardless of whether that student is full-time or part-time

**Major:** AUC offers courses of study leading to bachelor's degrees in various academic fields. Undergraduates must select a major and fulfill the requirements of the department offering the degree.

**Nationality:** Nationality is reported as primary nationality. If a student has more than one nationality, the primary nationality is the one that appears first on the admissions application.

**International:** Students whose primary nationality is other than Egyptian.

**Re-Admit Student:** A student who was enrolled at AUC, left for one or more semesters, and then re-enrolled at AUC. Re-admit students might or might not have earned credits at a different institution prior to re-enrolling at AUC.

**Retention Rate:** The percentage of enrolled students who return to the university during a specific time frame. In this report, first-year to second-year retention is reported; this is the percentage of first-time first-year students enrolled in the first year who return for their second year.

**Transfer Student:** A transfer student is a student who earned credits at a different institution prior to enrolling at AUC.

**Selectivity:** The percentage of student applicants that are admitted to the university.

**Study-Abroad Program:** Students pay the tuition fees of the host university and spend a semester or a year abroad.

**Undeclared:** A student who is enrolled at the university but has not yet declared a major.

**Unduplicated Headcount:** Each student, full-time or part-time, is counted once, regardless of the number of majors or programs in which he/she is enrolled.

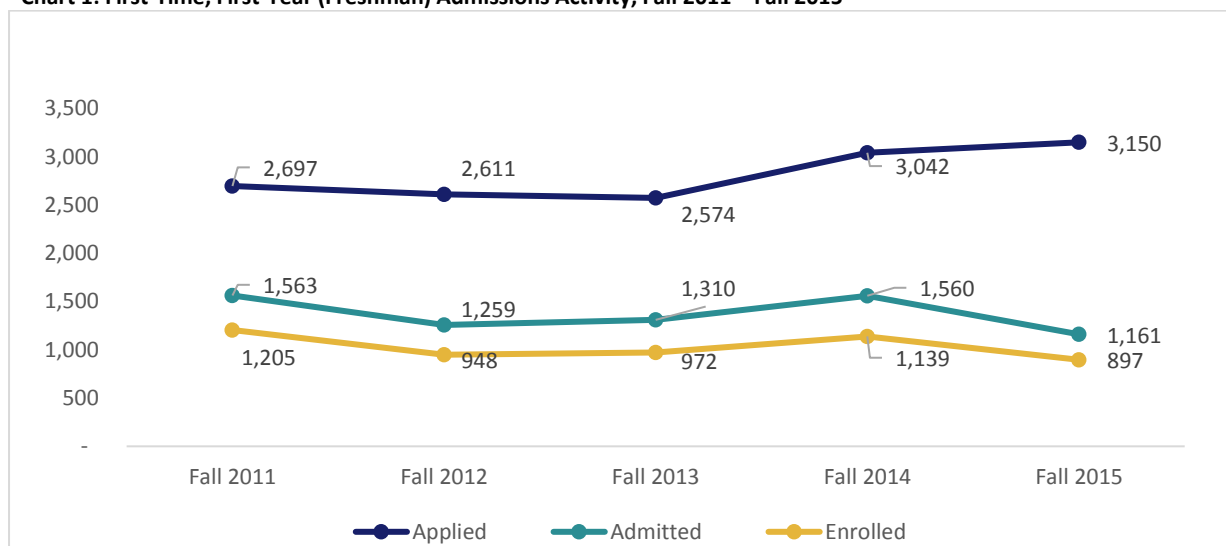
**Yield:** The percentage of student applicants admitted to the university who actually enroll.

## ADMISSIONS AND FIRST-YEAR UNDERGRADUATE ENROLLMENT

**Table 1: First-time, First-Year (Freshman) Enrollment by Gender, Fall 2013- Fall 2015**

	Fall 2013			Fall 2014			Fall 2015		
	Male	Female	Total	Male	Female	Total	Male	Female	Total
Applied	1,319	1,255	2,574	1,594	1,448	3,042	1,543	1,607	3,150
Admitted	604	706	1,310	760	799	1,560	513	648	1,161
Enrolled	422	550	972	535	604	1,139	381	516	897

**Chart 1: First-Time, First-Year (Freshman) Admissions Activity, Fall 2011 – Fall 2015**



**Table 2: First-Time, First-Year (Freshman) Admissions Activity, Fall 2013 - Fall 2015**

	Fall 2013	Fall 2014	Fall 2015
Percentage of applicants admitted (selectivity)	51%	51%	37%
Percentage of applicants enrolled (yield)	74%	73%	77%

**Table 3: First-Time, First-Year (Freshman) Selectivity Rate by Certificate, Fall 2012 - Fall 2015**

	Fall 2012	Fall 2013	Percent Change	Fall 2014	Percent Change	Fall 2015	Percent Change
International Baccalaureate	78%	80%	3%	77%	-4%	53%	-31%
Abitur	85%	79%	-7%	84%	6%	50%	-40%
French Baccalaureate	67%	58%	-13%	58%	0%	48%	-17%
Other	43%	52%	21%	57%	10%	46%	-19%
Thanawiya Amma Arts	40%	45%	13%	45%	0%	39%	-13%
Thanawiya Amma Science	51%	46%	-10%	39%	-15%	39%	0%
IGCSE/GCSE	40%	50%	25%	50%	0%	35%	-30%
American Diploma	47%	45%	-4%	49%	9%	30%	-39%

**Table 4: First-Time, First-Year (Freshman) Undergraduate Yield Rate by Certificate, Fall 2012 - Fall 2015**

	Fall 2012	Fall 2013	Percent Change	Fall 2014	Percent Change	Fall 2015	Percent Change
Thanawiya Amma Science	72%	80%	11%	74%	-8%	86%	16%
American Diploma	79%	82%	4%	82%	0%	81%	-1%
Thanawiya Amma Arts	86%	83%	-3%	77%	-7%	79%	3%
IGCSE/GCSE	76%	72%	-5%	72%	0%	77%	7%
Other	80%	55%	-31%	67%	22%	75%	12%
Abitur	53%	65%	23%	43%	-34%	72%	67%
French Baccalaureate	77%	74%	-4%	70%	-5%	68%	-3%
International Baccalaureate	66%	61%	-8%	58%	-5%	67%	16%

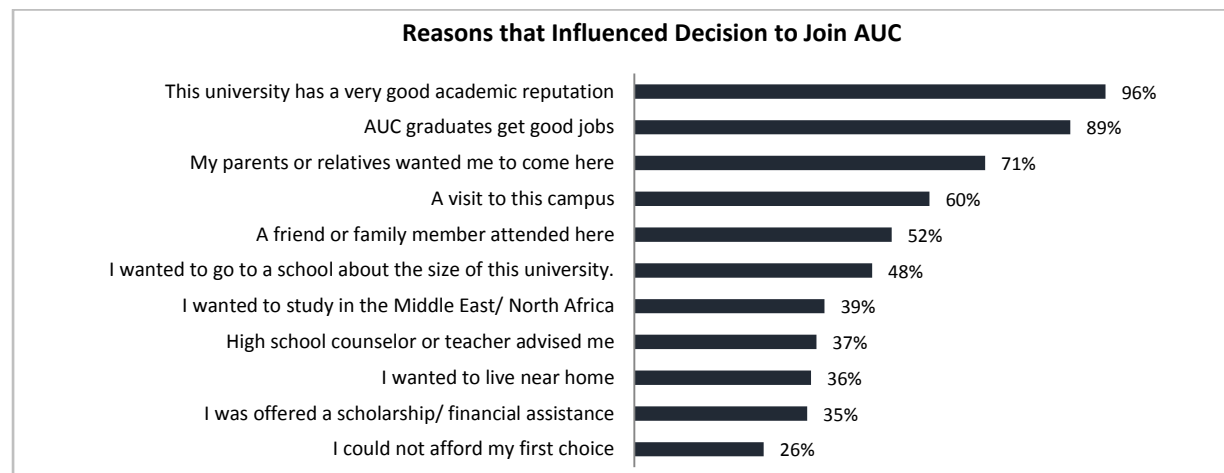
**Table 5: Number and Percent of First-Time, First-Year (Freshman) Degree-Seeking Students Enrolled in Fall 2015 Who Submitted SAT Scores**

Number	Percent
254	28%

**Table 6: 25th-75th Percentile Classification for SAT Scores for First-Time, First-Year (Freshman) Students Enrolled in Fall 2015 who Submitted SAT Scores**

	25 <sup>th</sup> - 75th Percentile	Average Score
SAT Critical Reading	450 - 530	497
SAT Math	560 - 670	618
SAT Writing	510 - 630	591

**Chart 2: Reason that Influenced Decision to Join AUC (Very Important or Somewhat Important)<sup>4</sup>**



<sup>4</sup> Source: First-Time Freshman Survey, Fall 2015

## ENROLLMENT SUMMARIES

**Table 7: Headcount<sup>5</sup> by Career Level, Gender and School, Fall 2015**

	Undergraduate			Graduate			Special Status			Total
	M	F	Total	M	F	Total	M	F	Total	
Graduate School of Education	-	-	-	10	61	71	-	-	-	71
Graduate Studies	-	-	-	9	25	34	-	-	-	34
School of Business	273	518	791	72	62	134	-	-	-	925
School of Global Affairs and Public Policy	43	234	277	107	223	330	-	-	-	607
School of Humanities and Social Sciences	203	493	696	72	208	280	-	-	-	976
School of Sciences and Engineering	1,325	673	1,998	168	161	329	-	-	-	2,327
Special Status	-	-	-	-	-	-	58	38	96	96
Undeclared	746	1,053	1,799	-	-	-	-	-	-	1,799
<b>Grand Total</b>	<b>2,590</b>	<b>2,971</b>	<b>5,561</b>	<b>438</b>	<b>740</b>	<b>1,178</b>	<b>58</b>	<b>38</b>	<b>96</b>	<b>6,835</b>

**Table 8: Headcount<sup>5</sup> by Gender, Fall 2015**

	Undergraduate		Graduate		Special Status		Total
	No.	%	No.	%	No.	%	
Male	2,590	47%	438	37%	58	60%	3,086
Female	2,971	53%	740	63%	38	40%	3,749
<b>Grand Total</b>	<b>5,561</b>	<b>100%</b>	<b>1,178</b>	<b>100%</b>	<b>96</b>	<b>100%</b>	<b>6,835</b>

**Table 9: Headcount<sup>5</sup> by Nationality, Fall 2015**

	Undergraduate		Graduate		Special Status		Total
	No.	%	No.	%	No.	%	
Egypt	5,356	96%	1,075	91%	22	23%	6,453
USA	25	0%	48	4%	34	35%	114
Arab Nationalities	125	2%	22	2%	0	0%	147
All Other Nationalities	55	1%	33	3%	40	42%	121
<b>Grand Total</b>	<b>5,561</b>	<b>100%</b>	<b>1,178</b>	<b>100%</b>	<b>96</b>	<b>100%</b>	<b>6,835</b>

**Table 10: Full-Time Equivalent Enrollment by Career Level, Fall 2015**

	Undergraduate	Graduate
Full-time student headcount	5,099	276
Part-time student headcount	462	902
Total credit hours of all part-time students	3,250	3,161
Full-time equivalent of part-time students	271	351
Total full-time equivalent enrollment	5,370	627
<b>Total full-time equivalent of all students</b>	<b>5,997</b>	

**Table 11: Enrollment<sup>5</sup> by School, Department and Career Level, Fall 2015**

	Undergraduate	Graduate	Special Status	Total
<b>Graduate School of Education</b>				
Educational Leadership	-	15	-	15
International and Comparative Education	-	56	-	56
<b>Total</b>	<b>-</b>	<b>71</b>	<b>-</b>	<b>71</b>
<b>Interdisciplinary Studies</b>				
Sustainable Development	-	34	-	34
<b>School of Business</b>				
Accounting	145	-	-	145
Business Administration	430	67	-	497
Economics	182	18	-	200
Economics in International Development	-	21	-	21
Finance	-	28	-	28
Management of Information and Communication Technology	34	-	-	34
<b>Total</b>	<b>791</b>	<b>134</b>	<b>0</b>	<b>925</b>
<b>School of Global Affairs and Public Policy</b>				

<sup>5</sup> Unduplicated headcount. Each student is counted once, in the School of his/her primary major.

	Undergraduate	Graduate	Special Status	Total
Communication and Media Arts	77	-	-	77
Gender and Women's Studies in the Middle East	-	10	-	10
Global Affairs	-	32	-	32
Integrated Marketing Communication	116	-	-	116
International and Comparative Law	-	45	-	45
International Human Rights Law	-	12	-	12
Journalism	2	-	-	2
Journalism & Mass Communication	-	52	-	52
Middle East Studies	7	26	-	33
Migration and Refugee Studies	-	14	-	14
Multimedia Journalism	75	-	-	75
Public Administration	-	71	-	71
Public Policy	-	42	-	42
Public Policy & Administration	-	11	-	11
Television & Digital Journalism	-	15	-	15
<b>Total</b>	<b>277</b>	<b>330</b>	<b>0</b>	<b>607</b>
<b>School of Humanities and Social Sciences</b>				
Anthropology	18	-	-	18
Arabic Studies	4	40	-	44
Community Psychology	-	12	-	12
Comparative Middle East Politics & Society	-	1	-	1
Counseling Psychology	-	41	-	41
Egyptology	3	-	-	3
Egyptology & Coptology	-	10	-	10
English and Comparative Literature	23	20	-	43
Film	16	-	-	16
Graphic Design	87	-	-	87
History	50	-	-	50
Honors Program History	1	-	-	1
Honors Program Political Science	9	-	-	9
Music Technology	15	-	-	15
Performance	3	-	-	3
Philosophy	30	16	-	46
Political Science	294	45	-	339
Psychology	95	-	-	95
Sociology	16	-	-	16
Sociology Anthropology	-	25	-	25
Teaching Arabic as a Foreign Language	-	37	-	37
Teaching English as a Foreign Language	-	1	-	1
Teaching English to Speakers of Other Language	-	32	-	32
Theatre	17	-	-	17
Visual Arts	15	-	-	15
<b>Total</b>	<b>696</b>	<b>280</b>	<b>0</b>	<b>976</b>
<b>School of Sciences and Engineering</b>				
Actuarial Science	70	-	-	70
Architectural Engineering	260	-	-	260
Biology	35	-	-	35
Biotechnology	-	52	-	52
Chemistry	34	23	-	57
Computer Engineering	152	-	-	152
Computer Science	82	22	-	104
Computing	-	2	-	2
Construction Engineering	399	48	-	447
Electronics and Communications Engineering	217	27	-	244
Environmental Engineering	-	16	-	16
Environmental System Design	-	1	-	1
Mathematics	8	-	-	8
Mechanical Engineering	464	36	-	500
Nanotechnology	-	29	-	29
Petroleum Engineering	184	-	-	184
PhD in Applied Science	-	24	-	24
PhD in Engineering	-	19	-	19



	Undergraduate	Graduate	Special Status	Total
Physics	93	15	-	<b>108</b>
Robotics, Control and Smart Systems	-	15	-	<b>15</b>
<b>Total</b>	<b>1,998</b>	<b>329</b>	<b>0</b>	<b>2,327</b>
<b>Special Status</b>				
Arabic Language Institute	-	-	28	<b>28</b>
Center for Arabic Study Abroad	-	-	11	<b>11</b>
Non-Degree	-	-	57	<b>57</b>
<b>Total</b>	-	-	<b>96</b>	<b>96</b>
<b>Undeclared</b>	<b>1,799</b>	-	-	<b>1,799</b>
<b>Grand Total</b>	<b>5,561</b>	<b>1,178</b>	<b>96</b>	<b>6,835</b>

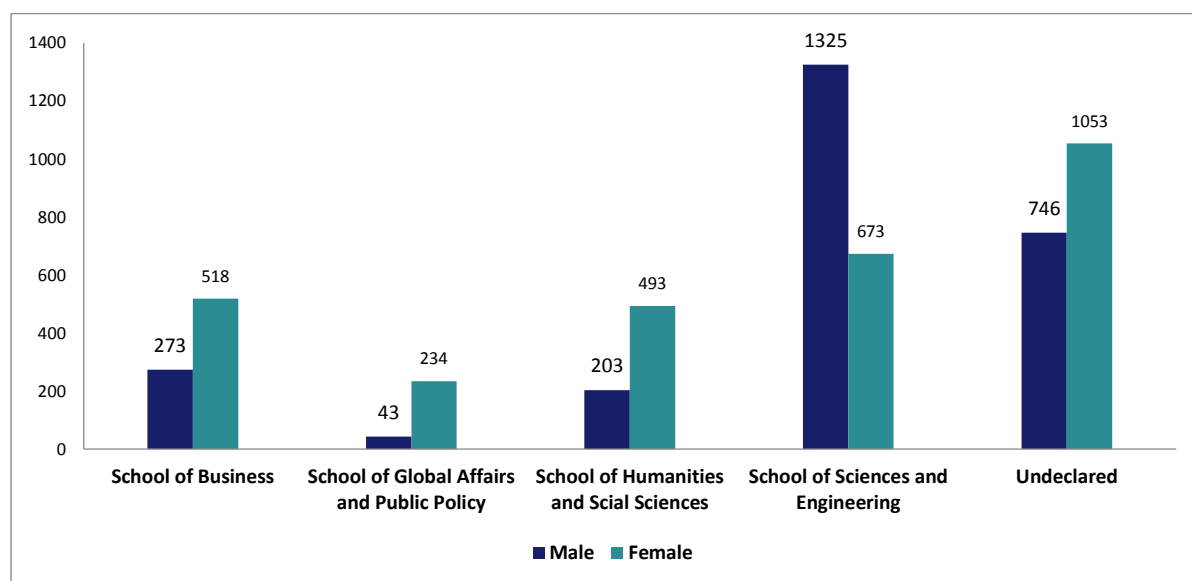
**Table 12: Enrollment by Nationality<sup>6</sup> and Career Level, Fall 2015**

	Undergraduate	Graduate	Special Status	Total
Egypt	5,356	1,075	22	<b>6,453</b>
USA	25	48	34	<b>107</b>
Saudi Arabia	26	3	0	<b>29</b>
Germany	3	2	13	<b>18</b>
Libya	17	1	0	<b>18</b>
Palestine	12	4	0	<b>16</b>
Yemen	14	2	0	<b>16</b>
Jordan	10	4	0	<b>14</b>
Syria	12	2	0	<b>14</b>
Nigeria	10	3	0	<b>13</b>
Algeria	10	1	0	<b>11</b>
Sudan	7	3	0	<b>10</b>
Japan	1	1	7	<b>9</b>
United Kingdom	5	2	2	<b>9</b>
Bahrain	8	0	0	<b>8</b>
India	0	0	8	<b>8</b>
Other	45	27	10	<b>82</b>
<b>Grand Total</b>	<b>5,561</b>	<b>1,178</b>	<b>96</b>	<b>6,835</b>

<sup>6</sup> Forty nine countries are represented as non-Egyptian

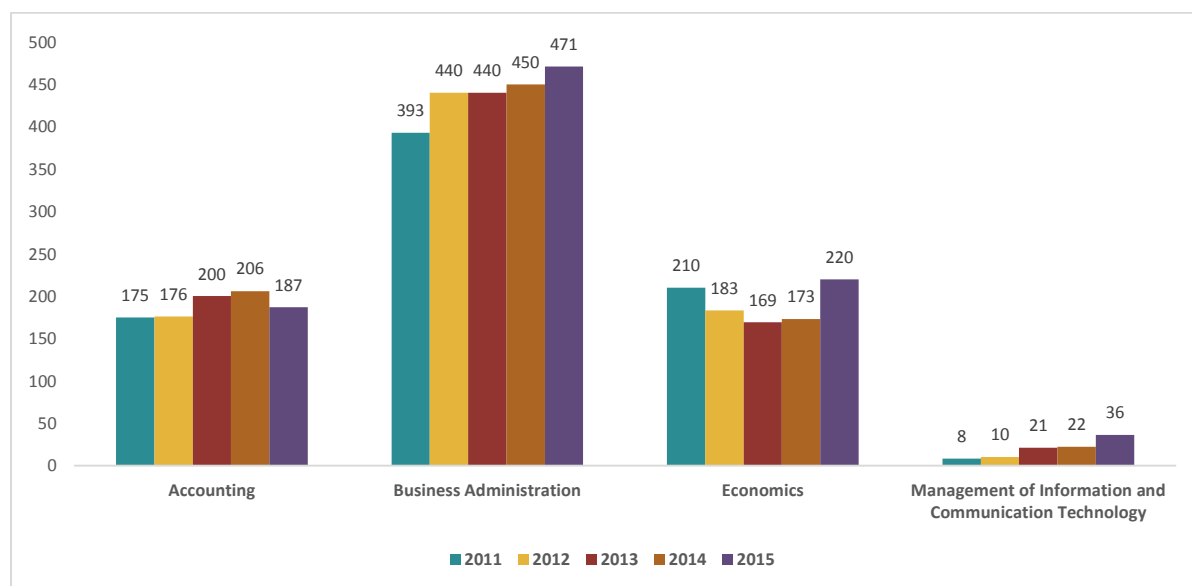
## UNDERGRADUATE ENROLLMENT

Chart 3: Undergraduate Enrollment<sup>7</sup> by School and Gender, Fall 2015



### Undergraduate Enrollment – School of Business

Chart 4: School of Business Undergraduate Enrollment by Major<sup>8</sup>, Fall 2011 - Fall 2015



<sup>7</sup> Unduplicated headcount. Each student is counted once, in the School of his/her primary major.

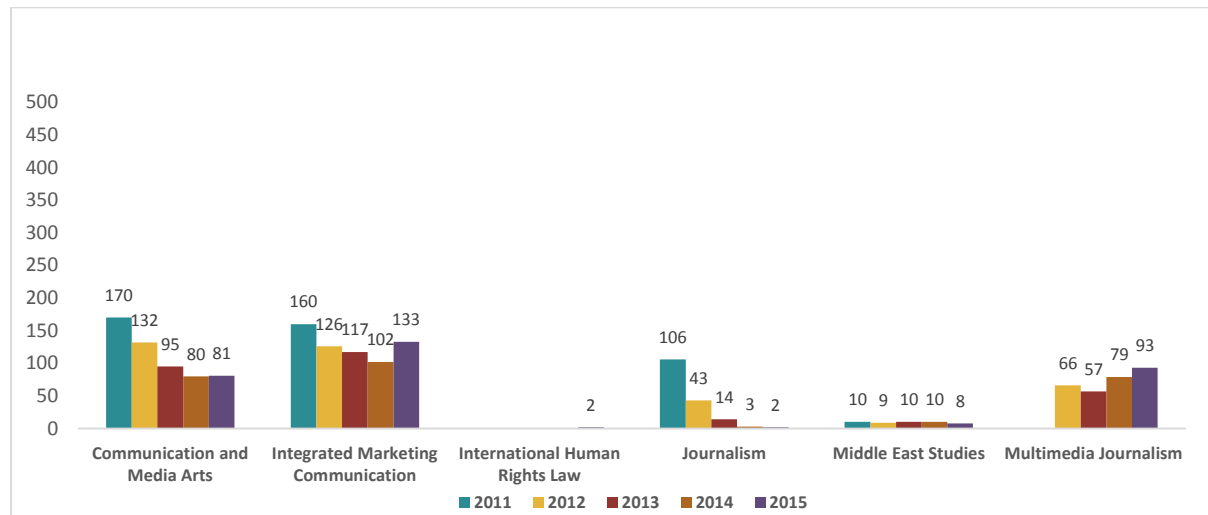
<sup>8</sup> Duplicated student headcount. Students are counted once in each of their majors.

**Table 13: School of Business, Undergraduate Enrollment by Major<sup>9</sup> and Gender, Fall 2013 - Fall 2015**

Major	Fall 2013		Fall 2014		Fall 2015		Fall 2015		Total
	Male	Female	Male	Female	Male	Female	Male	Female	
Accounting	113	87	113	87	113	87	84	103	<b>187</b>
Business Administration	132	308	132	308	132	308	122	349	<b>471</b>
Economics	63	106	63	106	63	106	86	134	<b>220</b>
Management of Information and Communication Technology	4	17	4	17	4	17	17	19	<b>36</b>

**Table14: School of Business, Undergraduate Enrollment by Major<sup>9</sup> and Class Level, Fall 2013-2015**

Major	Fall 2013					Fall 2014					Fall 2015				
	FR	SO	JR	SR	Total	FR	SO	JR	SR	Total	FR	SO	JR	SR	Total
Accounting	0	36	79	85	<b>200</b>	0	27	82	97	<b>206</b>	0	23	60	104	<b>187</b>
Business Administration	0	85	155	200	<b>440</b>	0	87	180	183	<b>450</b>	0	76	188	207	<b>471</b>
Economics	0	24	53	92	<b>169</b>	0	28	77	68	<b>173</b>	0	37	101	82	<b>220</b>
Management of Information and Communication Technology	1	5	8	7	<b>21</b>	0	6	7	9	<b>22</b>	0	8	18	10	<b>36</b>

**Undergraduate Enrollment – School of Global Affairs and Public Policy****Chart 5: School of Global Affairs and Public Policy Undergraduate Enrollment by Major<sup>9</sup>, Fall 2011 - Fall 2015****Table 15: School of Global Affairs and Public Policy, Undergraduate Enrollment by Major<sup>9</sup> and Gender, Fall 2013 - Fall 2015**

	Fall 2013			Fall 2014			Fall 2015		
	Male	Female	Total	Male	Female	Total	Male	Female	Total
Communication and Media Arts	18	77	<b>95</b>	13	67	<b>80</b>	16	65	<b>81</b>
Integrated Marketing Communication	7	110	<b>117</b>	2	100	<b>102</b>	14	119	<b>133</b>
International Human Rights Law	-	-	-	-	-	-	0	2	<b>2</b>
Journalism	4	10	<b>14</b>	1	2	<b>3</b>	2	0	<b>2</b>
Middle East Studies	1	9	<b>10</b>	1	9	<b>10</b>	2	6	<b>8</b>
Multimedia Journalism	11	46	<b>57</b>	11	68	<b>79</b>	16	77	<b>93</b>

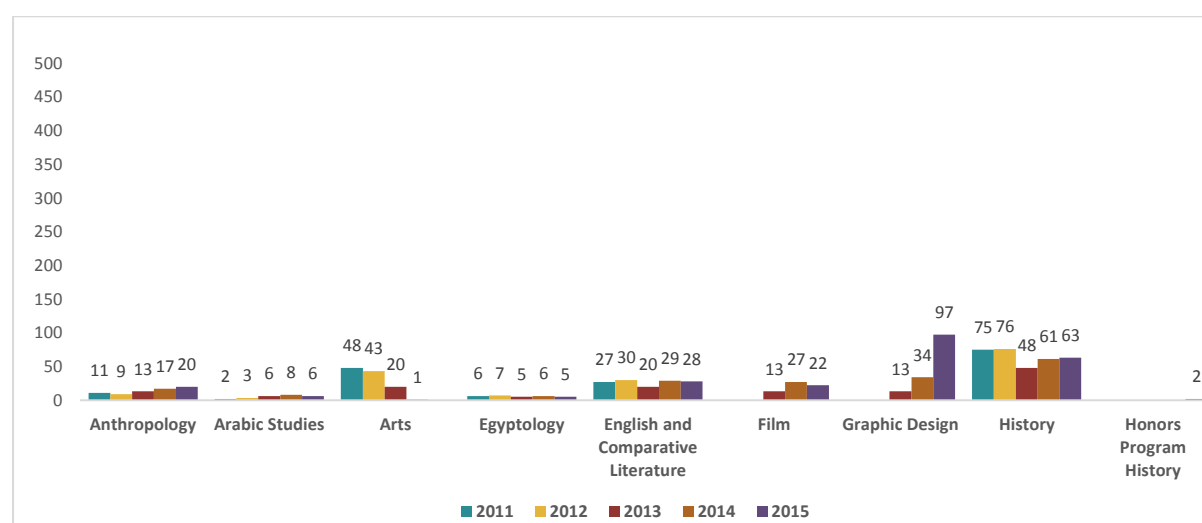
<sup>9</sup> Duplicated student headcount. Students are counted once in each of their majors.

**Table 16: School of Global Affairs and Public Policy, Undergraduate Enrollment by Major<sup>10</sup> and Class Level, Fall 2013 - Fall 2015**

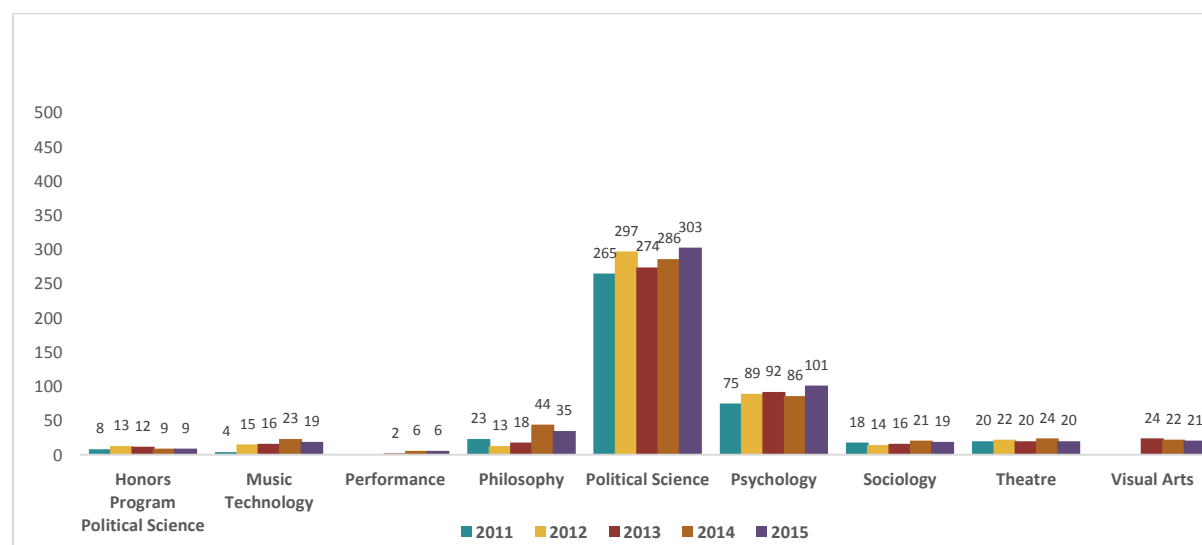
	Fall 2013					Fall 2014					Fall 2015				
	FR	SO	JR	SR	Total	FR	SO	JR	SR	Total	FR	SO	JR	SR	Total
Communication and Media Arts	1	12	36	46	95	0	14	39	27	80	0	18	35	28	81
Integrated Marketing Communication	0	11	45	61	117	0	6	53	43	102	0	18	56	59	133
International Human Rights Law	-	-	-	-	-	-	-	-	-	-	0	0	1	1	2
Journalism	0	1	4	9	14	0	0	2	1	3	0	0	0	2	2
Middle East Studies	0	1	7	2	10	0	2	3	5	10	1	2	3	2	8
Multimedia Journalism	0	9	30	18	57	0	11	40	28	79	0	12	39	42	93

## Undergraduate Enrollment – School of Humanities and Social Sciences

**Chart 6a: School of Humanities and Social Sciences, Undergraduate Enrollment by Major<sup>10</sup>, Fall 2011 - Fall 2015**



**Chart 6b: School of Humanities and Social Sciences, Undergraduate Enrollment by Major<sup>10</sup>, Fall 2011 - Fall 2015**



<sup>10</sup> Duplicated student headcount. Students are counted once in each of their majors.

**Table 17: School of Humanities and Social Sciences, Undergraduate Enrollment by Major<sup>11</sup> and Gender, Fall 2013 - Fall 2015**

	Fall 2013			Fall 2014			Fall 2015		
	Male	Female	Total	Male	Female	Total	Male	Female	Total
Anthropology	3	10	13	4	13	17	2	18	20
Arabic Studies	2	4	6	2	6	8	1	5	6
Art	0	20	20	0	1	1	-	-	-
Egyptology	2	3	5	3	3	6	1	4	5
English and Comparative Literature	3	17	20	3	26	29	2	26	28
Film	5	8	13	7	20	27	8	14	22
Graphic Design	4	9	13	5	29	34	14	83	97
History	24	24	48	37	24	61	31	32	63
Honors Program History	-	-	-	-	-	-	0	2	2
Honors Program in Political Science	4	8	12	2	7	9	1	8	9
Music Technology	11	5	16	15	8	23	14	5	19
Performance	0	2	2	1	5	6	1	5	6
Philosophy	10	8	18	21	23	44	15	20	35
Political Science	98	176	274	97	189	286	113	190	303
Psychology	2	90	92	2	84	86	7	94	101
Sociology	2	14	16	0	21	21	1	18	19
Theatre	11	9	20	15	9	24	11	9	20
Visual Arts	0	24	24	1	21	22	2	19	21

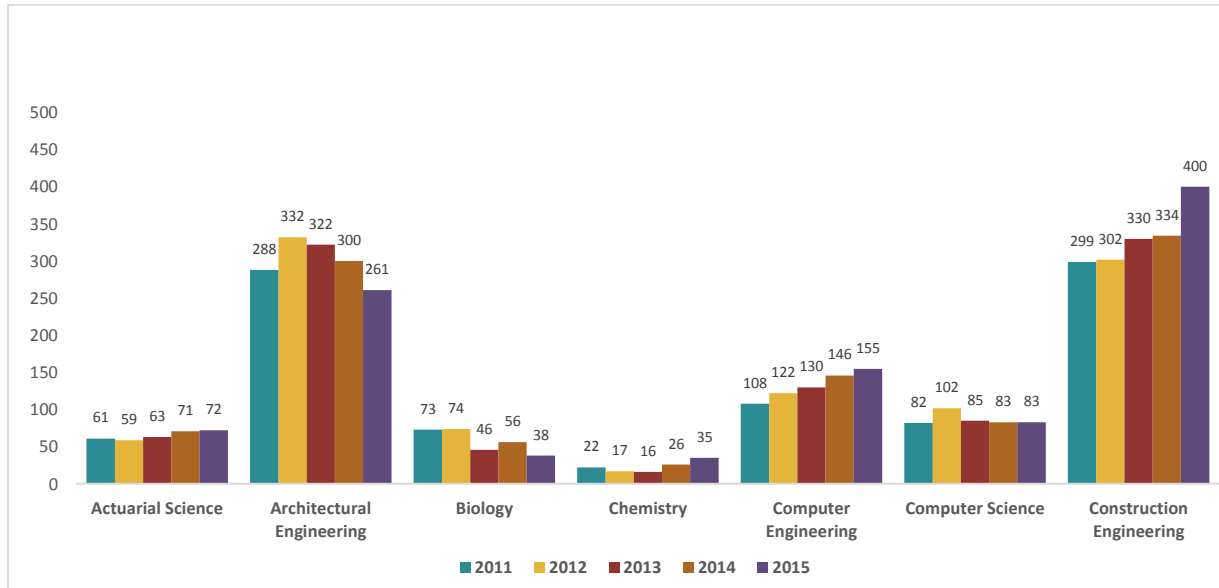
**Table 18: School of Humanities and Social Sciences, Undergraduate Enrollment by Major<sup>11</sup> and Class Level, Fall 2013 - Fall 2015**

Major	Fall 2013					Fall 2014					Fall 2015				
	FR	SO	JR	SR	Total	FR	SO	JR	SR	Total	FR	SO	JR	SR	Total
Anthropology	0	5	5	3	13	0	1	11	5	17	0	2	10	8	20
Arabic Studies	0	2	3	1	6	0	0	7	1	8	0	0	4	2	6
Art	0	0	5	15	20	0	0	0	1	1	-	-	-	-	-
Egyptology	0	0	3	2	5	0	1	2	3	6	1	1		3	5
English and Comparative Literature	0	5	9	6	20	0	11	7	11	29	0	9	11	8	28
Film	2	3	5	3	13	0	8	11	8	27	0	6	9	7	22
Graphic Design	0	9	3	1	13	0	10	16	8	34	2	17	37	41	97
History	0	7	23	18	48	0	12	35	14	61	0	9	39	15	63
Honors Program History	-	-	-	-	-	-	-	-	-	-	1	0	0	1	2
Honors Program in Political Science	0	0	4	8	12	0	0	1	8	9	0	0	1	8	9
Music Technology	2	2	6	6	16	1	6	6	10	23	0	5	4	10	19
Performance	0	0	1	1	2	0	1	2	3	6	0	0	2	4	6
Philosophy	0	3	8	7	18	0	10	21	13	44	0	2	26	7	35
Political Science	11	81	95	87	274	20	86	100	80	286	9	91	112	91	303
Psychology	2	27	30	33	92	2	17	34	33	86	1	19	44	37	101
Sociology	0	2	9	5	16	0	7	6	8	21	1	1	10	7	19
Theatre	1	4	10	5	20	1	4	10	9	24		9	5	6	20
Visual Arts	0	8	8	8	24	0	2	13	7	22		2	11	8	21

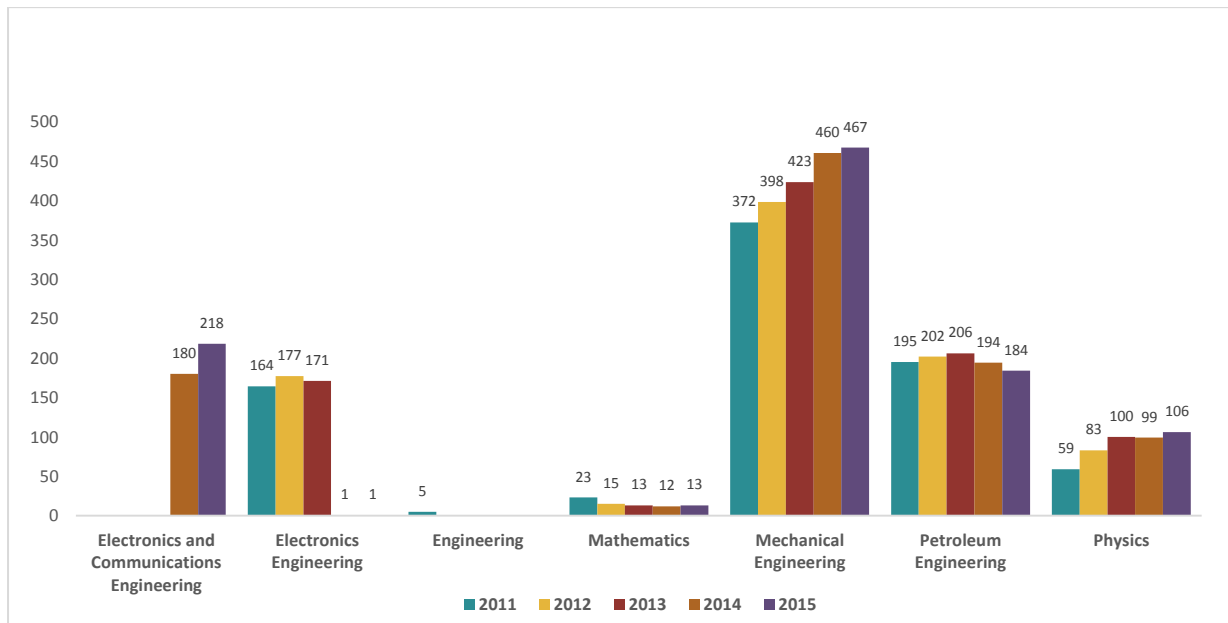
<sup>11</sup> Duplicated student headcount. Students are counted once in each of their majors.

## Undergraduate Enrollment – School of Sciences and Engineering

**Chart 7a: School of Sciences and Engineering, Undergraduate Enrollment by Major<sup>12</sup>, Fall 2011 - Fall 2015**



**Chart 7b: School of Sciences and Engineering, Undergraduate Enrollment by Major<sup>12</sup>, Fall 2011 - Fall 2015**



<sup>12</sup> Duplicated student headcount. Students are counted once in each of their majors.

**Table 19: School of Sciences and Engineering, Undergraduate Enrollment by Major<sup>13</sup> and Gender, Fall 2013 - Fall 2015**

	Fall 2013			Fall 2014			Fall 2015		
	Male	Female	Total	Male	Female	Total	Male	Female	Total
Actuarial Science	21	42	63	22	49	71	17	55	72
Architectural Engineering	95	227	322	84	216	300	62	199	261
Biology	17	29	46	14	42	56	9	29	38
Chemistry	9	7	16	14	12	26	19	16	35
Computer Engineering	81	49	130	93	53	146	108	47	155
Computer Science	62	23	85	59	24	83	56	27	83
Construction Engineering	234	96	330	228	106	334	276	124	400
Electronics and Communication Engineering	-	-	-	129	51	180	151	67	218
Electronics Engineering	-	-	-	-	-	-	0	1	1
Engineering	119	52	171	0	1	171	-	-	-
Mathematics	8	5	13	6	6	13	7	6	13
Mechanical Engineering	380	43	423	411	49	423	408	59	467
Petroleum Engineering	179	27	206	164	30	206	158	26	184
Physics	73	27	100	79	20	100	74	32	106

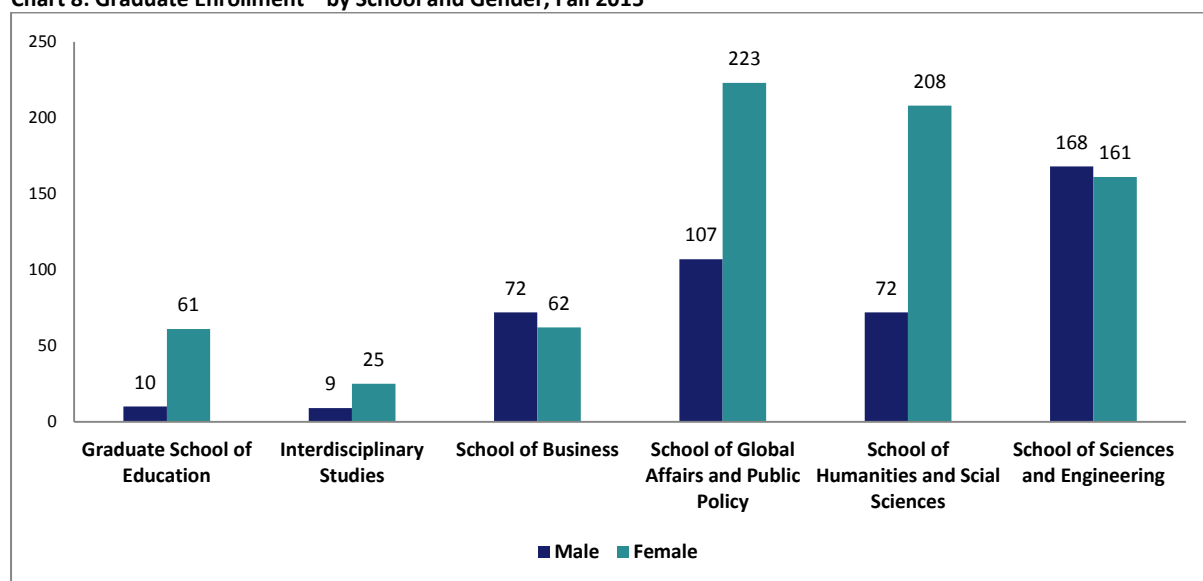
**Table 20: School of Sciences and Engineering, Undergraduate Enrollment by Major<sup>13</sup> and Class Level, Fall 2013 - Fall 2015**

Major	Fall 2013					Fall 2014					Fall 2015				
	FR	SO	JR	SR	Total	FR	SO	JR	SR	Total	FR	SO	JR	SR	Total
Actuarial Science	16	18	13	16	63	19	24	13	15	71	15	22	19	16	72
Architectural Engineering	32	57	61	172	322	35	53	50	162	300	24	43	59	135	261
Biology	15	13	9	9	46	27	7	11	11	56	9	7	6	16	38
Chemistry	5	5	3	3	16	11	4	6	5	26	11	12	6	6	35
Computer Engineering	53	33	15	29	130	52	35	27	32	146	43	39	24	49	155
Computer Science	31	27	13	14	85	21	20	21	21	83	25	13	20	25	83
Construction Engineering	86	68	65	111	330	78	76	61	119	334	98	91	80	131	400
Electronics and Communication Engineering	-	-	-	-	-	64	33	32	51	180	75	50	23	70	218
Electronics Engineering	54	37	24	56	171	0	0	0	1	1	0	0	0	1	1
Engineering	54	37	24	56	171	0	0	0	1	1	-	-	-	-	-
Mathematics	1	4	2	6	13	2	0	6	4	12	2	1	3	7	13
Mechanical Engineering	84	94	83	162	423	99	86	104	171	460	60	114	89	204	467
Petroleum Engineering	52	48	27	79	206	45	40	48	61	194	35	41	29	79	184
Physics	22	51	19	8	100	25	39	23	12	99	20	44	25	17	106

<sup>13</sup> Duplicated student headcount. Students are counted once in each of their majors.

## GRADUATE ENROLLMENT

Chart 8: Graduate Enrollment<sup>14</sup> by School and Gender, Fall 2015



### Graduate Enrollment – Graduate School of Education

Chart 9: Graduate School of Education, Graduate Enrollment<sup>15</sup>, Fall 2011 - Fall 2015

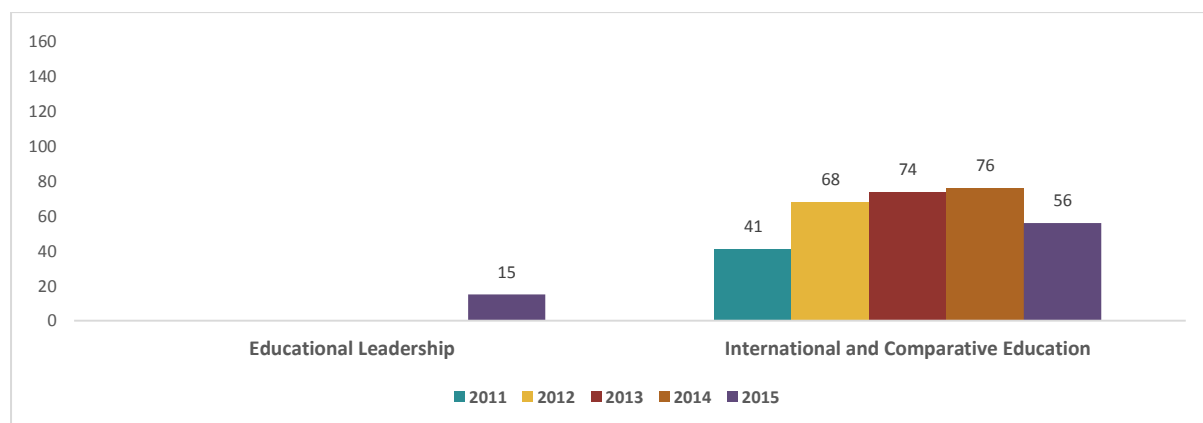


Table 21: Graduate School of Education, Graduate Enrollment<sup>15</sup> by Gender Fall 2013 - Fall 2015

	Fall 2013			Fall 2014			Fall 2015		
	Male	Female	Total	Male	Female	Total	Male	Female	Total
Educational Leadership	-	-	-	-	-	-	3	12	15
International and Comparative Education	18	56	74	13	63	76	7	49	56

### Graduate Enrollment – Interdisciplinary Studies

Table 22: Interdisciplinary Studies, Graduate Enrollment<sup>15</sup> by Gender, Fall 2013 – Fall 2015

	Fall 2013			Fall 2014			Fall 2015		
	Male	Female	Total	Male	Female	Total	Male	Female	Total
Sustainable Development	8	15	23	8	22	30	9	25	34

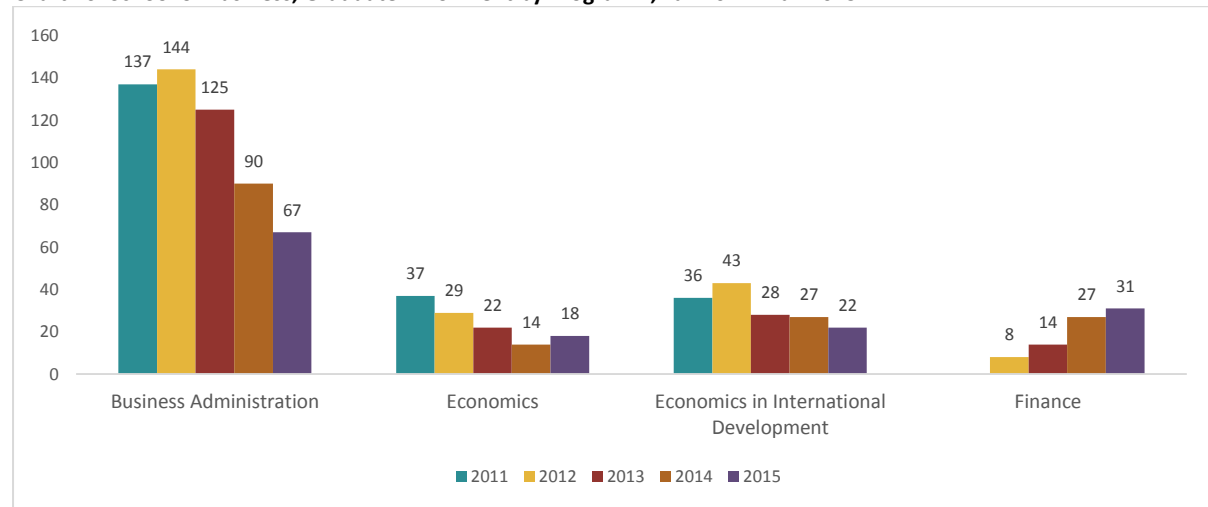
<sup>14</sup> Unduplicated headcount. Each student is counted once, in the School of his/her primary major.

<sup>15</sup> Duplicated student headcount. Students are counted once in each of their majors.



## Graduate Enrollment – School of Business

**Chart 10: School of Business, Graduate Enrollment by Program<sup>16</sup>, Fall 2011 - Fall 2015**



**Table 23: School of Business, Graduate Enrollment by Program<sup>16</sup> and Gender, Fall 2013 - Fall 2015**

	Fall 2013			Fall 2014			Fall 2015		
	Male	Female	Total	Male	Female	Total	Male	Female	Total
Business Administration	92	33	125	67	23	90	50	17	67
Economics	8	14	22	1	13	14	4	14	18
Economics in International Development	7	21	28	8	19	27	5	17	22
Finance	5	9	14	14	13	27	16	15	31

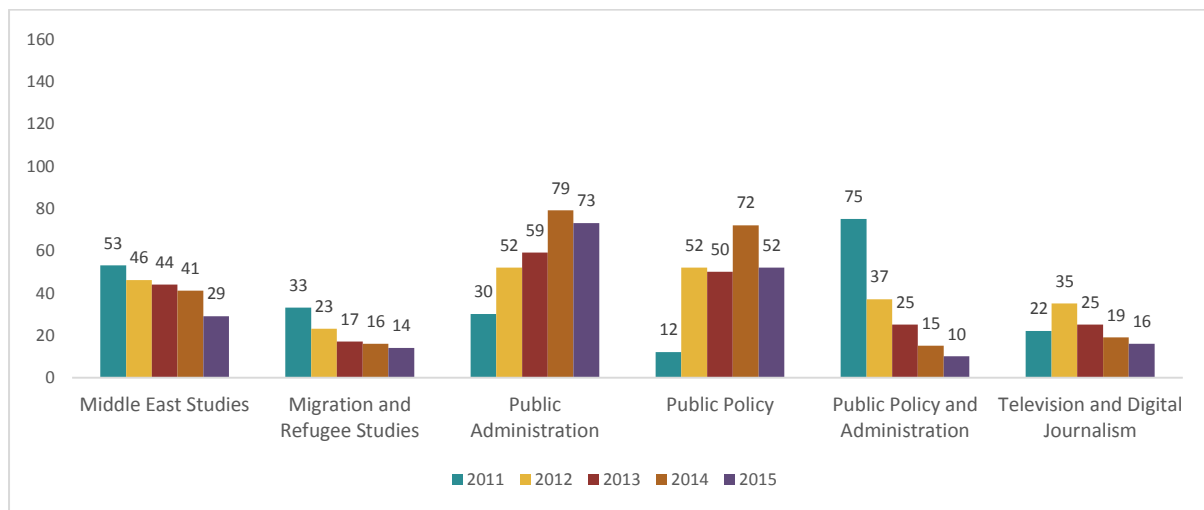
## Graduate Enrollment – School of Global Affairs and Public Policy

**Chart 11a: School of Global Affairs and Public Policy, Graduate Enrollment by Program<sup>16</sup>, Fall 2011 - Fall 2015**



<sup>16</sup> Duplicated student headcount. Students are counted once in each of their majors.

**Chart 11b: School of Global Affairs and Public Policy, Graduate Enrollment by Program<sup>17</sup>, Fall 2011 - Fall 2015**



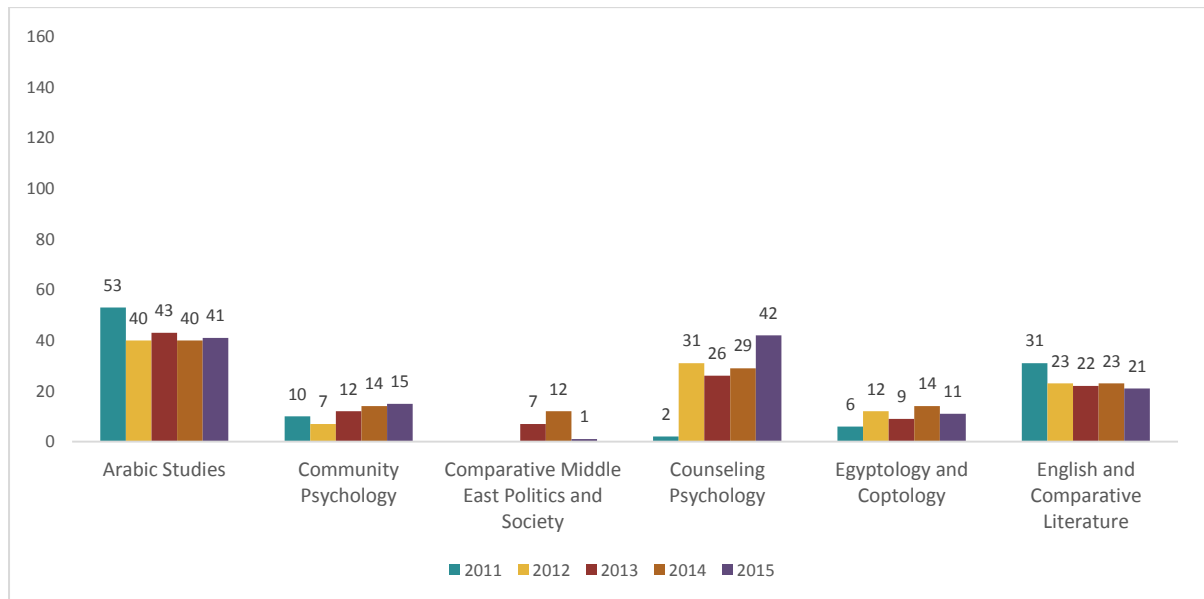
**Table 24: School of Global Affairs and Public Policy, Graduate Enrollment by Program<sup>17</sup> and Gender, Fall 2013 - Fall 2015**

	Fall 2013			Fall 2014			Fall 2015		
	Male	Female	Total	Male	Female	Total	Male	Female	Total
Gender and Woman's Studies in the Middle East/North Africa	1	21	22	1	14	15	2	9	11
Global Affairs	15	12	27	14	16	30	18	15	33
International and Comparative Law							26	20	
International Human Rights Law	9	15	24	7	12	19	2	12	14
Journalism and Mass Communication	7	46	53	7	43	50	5	47	52
Law	16	8	24	24	15	39	-	-	-
Middle East Studies	16	28	44	14	27	41	10	19	29
Migration and Refugee Studies	4	13	17	5	11	16	4	10	14
Public Administration	14	45	59	19	57	76	21	52	73
Public Policy	15	35	50	22	50	72	16	36	52
Public Policy and Administration	6	19	25	6	9	15	5	5	10
Television and Digital Journalism	7	18	25	3	16	19	5	11	16

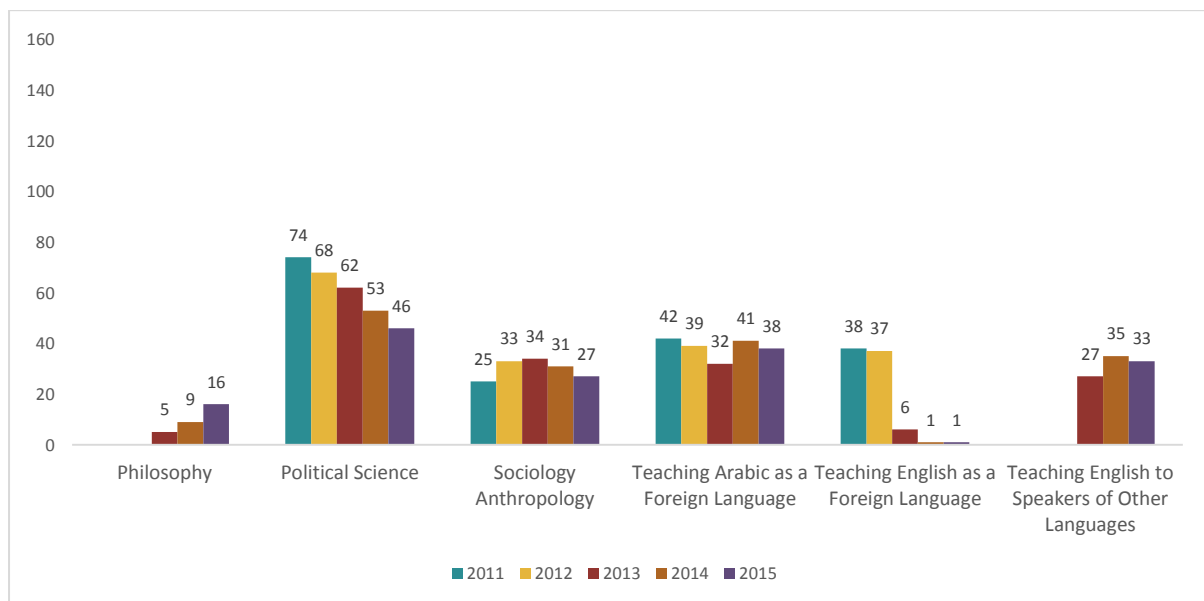
<sup>17</sup> Duplicated student headcount. Students are counted once in each of their majors.

## Graduate Enrollment – School of Humanities and Social Sciences

**Chart 12a: School of Humanities and Social Sciences, Graduate Enrollment by Program<sup>18</sup>, Fall 2011 - Fall 2015**



**Chart 12b: School of Humanities and Social Sciences, Graduate Enrollment by Program<sup>18</sup>, Fall 2011 - Fall 2015**

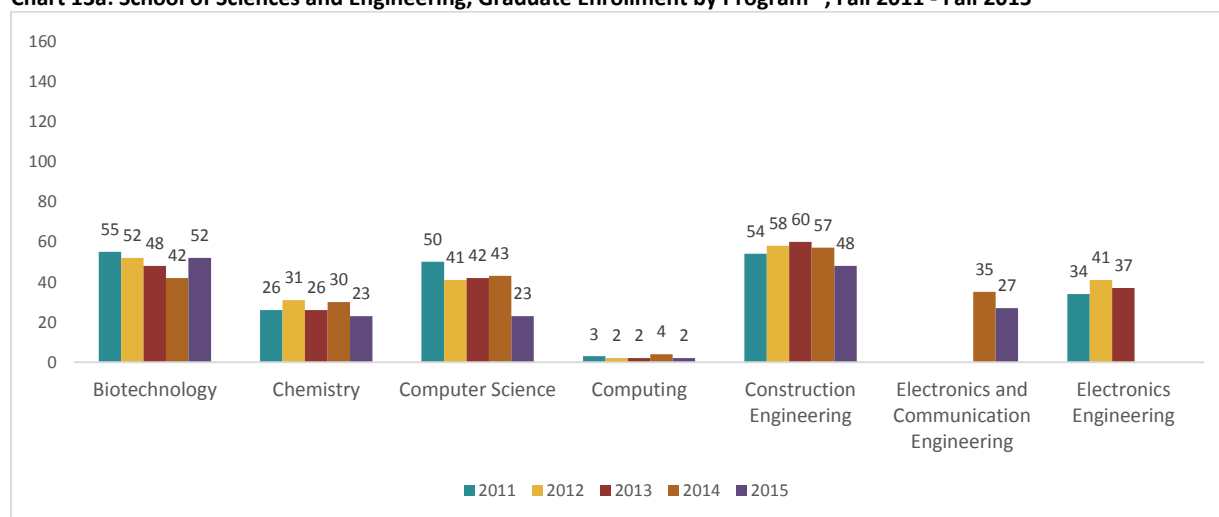
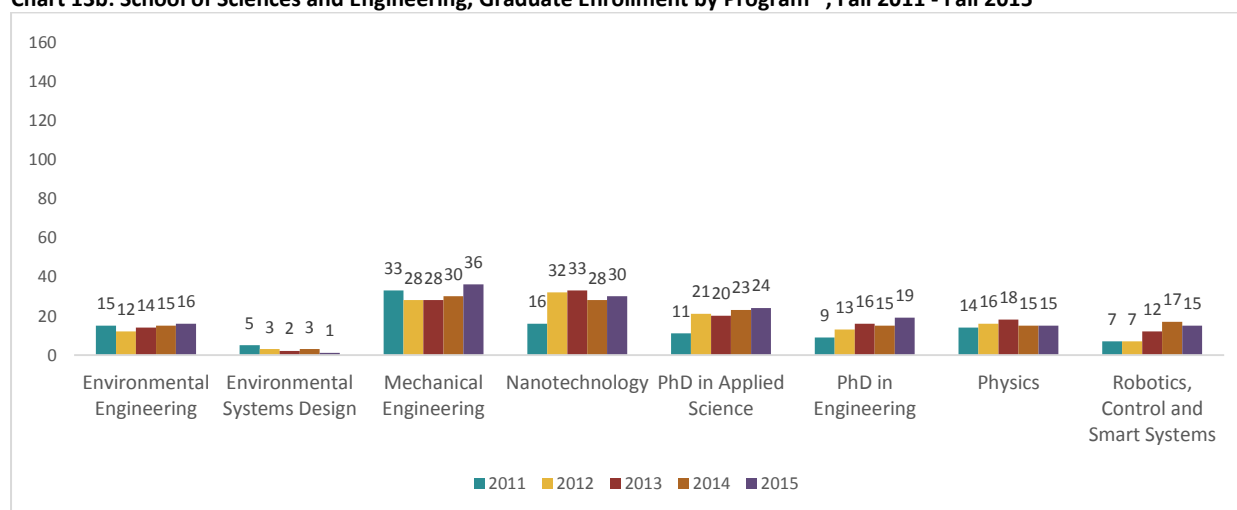


<sup>18</sup> Duplicated student headcount. Students are counted once in each of their majors.

**Table 25: School of Humanities and Social Sciences, Graduate Enrollment<sup>19</sup> by Program and Gender, Fall 2013 - Fall 2015**

	Fall 2013			Fall 2014			Fall 2015		
	Male	Female	Total	Male	Female	Total	Male	Female	Total
Arabic Studies	13	30	43	12	28	40	10	31	41
Community Psychology	3	9	12	2	12	14	0	15	15
Comparative Middle East Politics and Society	4	3	7	4	8	12	0	1	1
Counseling Psychology	2	24	26	2	27	29	2	40	42
Egyptology and Coptology	1	8	9	2	12	14	2	9	11
English and Comparative Literature	1	21	22	2	21	23	1	20	21
Philosophy	2	3	5	4	5	9	7	9	16
Political Science	23	39	62	21	32	53	18	28	46
Sociology Anthropology	10	24	34	6	25	31	8	19	27
Teaching Arabic as a Foreign Language	11	21	32	24	17	41	20	18	38
Teaching English as a Foreign Language	2	4	6	1	0	1	1	0	1
Teaching English to Speakers of Other Languages	1	26	27	2	33	35	4	29	33

### Graduate Enrollment – School of Sciences and Engineering

**Chart 13a: School of Sciences and Engineering, Graduate Enrollment by Program<sup>19</sup>, Fall 2011 - Fall 2015****Chart 13b: School of Sciences and Engineering, Graduate Enrollment by Program<sup>19</sup>, Fall 2011 - Fall 2015**

<sup>19</sup> Duplicated student headcount. Students are counted once in each of their majors.

**Table 26: School of Sciences and Engineering, Graduate Enrollment by Program<sup>20</sup> and Gender, Fall 2013 - Fall 2015**

	Fall 2013			Fall 2014			Fall 2015		
	Male	Female	Total	Male	Female	Total	Male	Female	Total
Biotechnology	17	31	<b>48</b>	9	33	<b>42</b>	13	39	<b>52</b>
Chemistry	7	19	<b>26</b>	10	20	<b>30</b>	6	17	<b>23</b>
Computer Science	27	15	<b>42</b>	26	17	<b>43</b>	14	9	<b>23</b>
Computing	0	2	<b>2</b>	4	0	<b>4</b>	2		<b>2</b>
Construction Engineering	43	17	<b>60</b>	37	20	<b>57</b>	30	18	<b>48</b>
Electronics and Communication Engineering	-	-	-	23	12	<b>35</b>	18	9	<b>27</b>
Electronics Engineering	26	11	<b>37</b>	-	-	-	-	-	-
Environmental Engineering	5	9	<b>14</b>	7	8	<b>15</b>	6	10	<b>16</b>
Environmental Systems Design	0	2	<b>2</b>	1	2	<b>3</b>		1	<b>1</b>
Mechanical Engineering	21	7	<b>28</b>	21	9	<b>30</b>	30	6	<b>36</b>
Nanotechnology	12	21	<b>33</b>	11	17	<b>28</b>	17	13	<b>30</b>
PhD in Applied Science	6	14	<b>20</b>	6	17	<b>23</b>	6	18	<b>24</b>
PhD in Engineering	6	10	<b>16</b>	4	11	<b>15</b>	7	12	<b>19</b>
Physics	8	10	<b>18</b>	8	7	<b>15</b>	9	6	<b>15</b>
Robotics, Control and Smart Systems	8	4	<b>12</b>	14	3	<b>17</b>	11	4	<b>15</b>
Biotechnology	17	31	<b>48</b>	9	33	<b>42</b>	13	39	<b>52</b>

<sup>20</sup> Duplicated student headcount. Students are counted once in each of their majors.

## GRADUATION PATTERNS

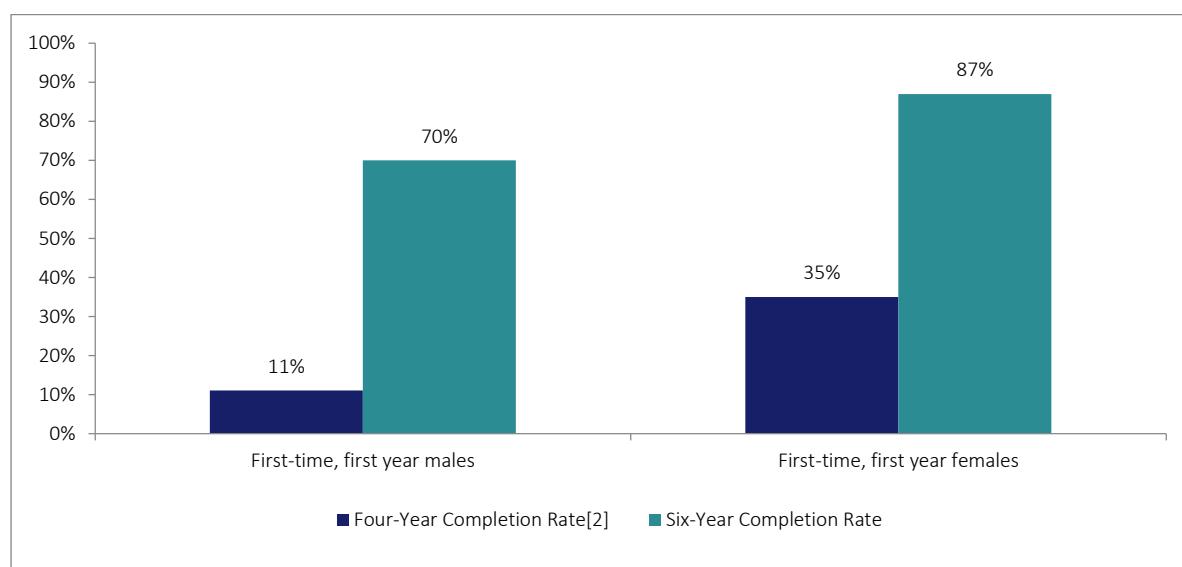
**Table 27: Annual Graduation Patterns**

Year	Count		Annual Total	Percent	
	Undergraduate	Graduate		Undergraduate	Graduate
2006	769	249	1,018	75.50%	24.50%
2007	833	249	1,082	77.00%	23.00%
2008	688	274	962	71.50%	28.50%
2009	778	257	1,035	75.20%	24.80%
2010	860	294	1,154	74.50%	25.50%
2011	847	247	1,094	77.40%	22.60%
2012	919	308	1,227	74.90%	25.10%
2013	1,068	296	1,364	78.20%	21.70%
2014	1,097	335	1,432	76.61%	23.39%
2015	949	314	1,263	75.14%	24.86%

**Table 28: Undergraduate Six-Year Completion Rate, Fall 2002- Fall 2009 Cohort<sup>21</sup>**

Fall 2002	Fall 2003	Fall 2004	Fall 2005	Fall 2006	Fall 2007	Fall 2008	Fall 2009
80%	82%	80%	82%	82%	82%	80%	79%

**Chart 14: Undergraduate Four-Year and Six-Year Completion Rates by Gender, Fall 2009 Cohort<sup>22</sup>**



<sup>21</sup> The six-year completion rate is the percentage of degree seeking freshman (not including transfers and readmits) that were enrolled for the first time in the Fall and completed requirements and graduated within a six-year period.

<sup>22</sup> Many AUC students take more than four years to complete their undergraduate studies because of the need for one or more semesters of remedial English before starting their coursework. In addition, AUC's popular engineering programs require five years of study to complete.

**Table 29: Undergraduate Graduation Patterns by Major, 2012 - 2015<sup>23</sup>**

	Feb-12	Jun-12	Feb-13	Jun-13	Feb-14	Jun-14	Feb-15	Jun-15
<b>School of Business</b>								
Accounting	24	15	26	24	53	28	41	40
Business Administration	58	101	97	103	96	94	70	100
Economics	38	49	54	42	59	39	30	39
Management of Information and Communication Technology	-	-	1	1	2	3	3	6
<b>Total</b>	<b>120</b>	<b>165</b>	<b>178</b>	<b>170</b>	<b>210</b>	<b>164</b>	<b>144</b>	<b>185</b>
<b>School of Global Affairs and Public Policy</b>								
Communication and Media Arts	55	24	32	45	34	25	18	19
Integrated Marketing Communication	45	55	28	33	28	30	17	26
Journalism	13	16	15	9	5	5	1	1
Journalism and Mass Communication	3	-	1	1	-	-	-	-
Middle East Studies	3	3	-	-	1	2	3	4
Multimedia Journalism	-	4	13	16	11	10	14	12
<b>Total</b>	<b>119</b>	<b>102</b>	<b>89</b>	<b>104</b>	<b>79</b>	<b>72</b>	<b>53</b>	<b>62</b>
<b>School of Humanities and Social Sciences</b>								
Anthropology	-	2	1	-	2	2	-	3
Arabic Studies	-	2	1	-	-	2	-	2
Art	14	12	6	18	10	8	1	-
Egyptology	-	1	1	1	-	1	-	2
English and Comparative Literature	2	4	9	6	3	5	3	5
Film	-	-	-	-	-	2	3	4
History	1	4	3	5	5	2	6	2
Honors Program in Political Science	-	3	2	8	4	5	2	4
Music Technology	-	-	2	3	3	1	1	5
Performance	-	-	-	1	-	-	-	1
Philosophy	3	1	4	1	1	1	5	4
Political Science	33	33	40	46	50	48	37	58
Psychology	10	10	19	9	20	14	13	18
Sociology	2	4	2	1	3	3	4	3
Theatre	1	4	2	2	2	-	2	2
Visual Arts	-	-	-	-	1	8	-	8
<b>Total</b>	<b>66</b>	<b>80</b>	<b>92</b>	<b>101</b>	<b>104</b>	<b>102</b>	<b>77</b>	<b>121</b>
<b>School of Sciences and Engineering</b>								
Actuarial Science	11	8	5	9	4	8	5	6
Architectural Engineering	15	26	18	30	31	53	36	45
Biology	6	5	5	8	3	6	2	4
Chemistry	1	2	2	4	1	1	-	2
Computer Engineering	2	3	3	7	6	10	4	8
Computer Science	8	11	14	11	3	6	9	9
Construction Engineering	22	32	30	29	23	41	19	34
Electronics and Communications Engineering	-	-	-	-	-	20	6	13
Electronics Engineering	7	16	15	24	9	2	-	-
Mathematics	1	1	2	-	-	1	-	-
Mechanical Engineering	24	43	33	37	37	48	37	33
Petroleum Engineering	-	17	22	22	21	27	17	18
Physics	2	4	3	1	4	1	-	-
<b>Total</b>	<b>99</b>	<b>168</b>	<b>152</b>	<b>182</b>	<b>142</b>	<b>224</b>	<b>135</b>	<b>172</b>
<b>Grand Total</b>	<b>404</b>	<b>515</b>	<b>511</b>	<b>557</b>	<b>535</b>	<b>562</b>	<b>409</b>	<b>540</b>

<sup>23</sup> Students who complete their requirements during Winter and Summer semesters graduate the following February.

**Table 30: Graduate Graduation Pattern by Major, 2012- 2015<sup>24</sup>**

	Feb-12	Jun-12	Feb-13	Jun-13	Feb-14	Jun-14	Feb-15	Jun-15
<b>Graduate School of Education</b>								
International and Comparative Education	-	7	8	6	13	10	15	5
<b>School of Business</b>								
Business Administration	23	30	30	16	38	25	34	9
Economics	9	8	2	8	4	5	5	-
Economics in International Development	8	6	4	2	6	10	8	3
Finance	-	-	-	-	-	2	1	8
<b>Total</b>	<b>40</b>	<b>44</b>	<b>36</b>	<b>26</b>	<b>48</b>	<b>42</b>	<b>48</b>	<b>20</b>
<b>School of Global Affairs and Public Policy</b>								
Gender and Women's Studies in the Middle East	3	2	1	5	5	2	1	4
Global Affairs	-	-	-	1	2	1	4	4
International Human Rights Law	8	10	6	9	7	6	4	2
Journalism and Mass Communication	2	8	4	8	8	6	6	5
Law	1	2	4	4	-	4	2	2
Middle East Studies	4	8	12	7	5	6	5	-
Migration and Refugee Studies	6	5	4	4	3	2	2	1
Public Administration	1	4	2	5	3	4	5	5
Public Policy	2	-	-	5	2	2	15	7
Public Policy and Administration	4	7	2	3	4	-	2	-
Television and Digital Journalism	1	3	1	7	3	8	12	-
<b>Total</b>	<b>32</b>	<b>49</b>	<b>36</b>	<b>58</b>	<b>42</b>	<b>41</b>	<b>58</b>	<b>30</b>
<b>School of Humanities and Social Sciences</b>								
Arabic Studies	3	6	8	4	5	6	5	3
Community Psychology	-	1	4	-	-	-	-	-
Counseling Psychology	2	8	-	7	1	5	1	4
Egyptology and Coptology	-	-	-	1	-	2	3	1
English and Comparative Literature	3	6	1	2	1	2	4	6
Political Science	7	17	13	5	6	6	10	9
Sociology Anthropology	2	2	2	1	2	4	1	3
Teaching Arabic as a Foreign Language	4	2	3	7	3	3	2	3
Teaching English as a Foreign Language	3	12	1	2	1	11	-	-
Teaching English to Speakers of Other Languages	-	-	-	12	-	-	2	10
<b>Total</b>	<b>24</b>	<b>54</b>	<b>32</b>	<b>41</b>	<b>19</b>	<b>39</b>	<b>28</b>	<b>39</b>
<b>School of Graduate Studies</b>								
Sustainable Development	-	-	-	-	-	-	-	5
<b>School of Sciences and Engineering</b>								
Biotechnology	8	5	15	2	6	10	4	2
Chemistry	-	-	3	1	1	4	-	8
Computer Science	5	1	-	1	8	2	4	2
Computing	4	-	1	-	2	2	1	1
Construction Engineering	8	4	6	3	7	6	11	6
Electronics Engineering	-	2	4	3	4	2	11	2
Environmental Engineering	1	-	1	1	4	-	1	1
Environmental Systems Design	2	2	1	-	1	-	-	1
Mechanical Engineering	7	6	2	2	4	2	1	2
Nanotechnology	-	-	4	1	2	3	2	2
PhD in Applied Science	-	-	-	-	-	1	-	-
PhD in Engineering	-	-	-	-	1	2	2	1
Physics	2	-	2	-	4	2	1	-
Product Development and System Management	-	1	-	-	-	-	-	-
Robotics, Control and Smart Systems	-	-	-	-	-	1	-	-
<b>Total</b>	<b>37</b>	<b>21</b>	<b>39</b>	<b>14</b>	<b>44</b>	<b>37</b>	<b>38</b>	<b>28</b>
<b>Grand Total</b>	<b>133</b>	<b>175</b>	<b>151</b>	<b>145</b>	<b>166</b>	<b>169</b>	<b>187</b>	<b>127</b>

<sup>24</sup> Students who complete their requirements during Winter and Summer semesters graduate the following February.



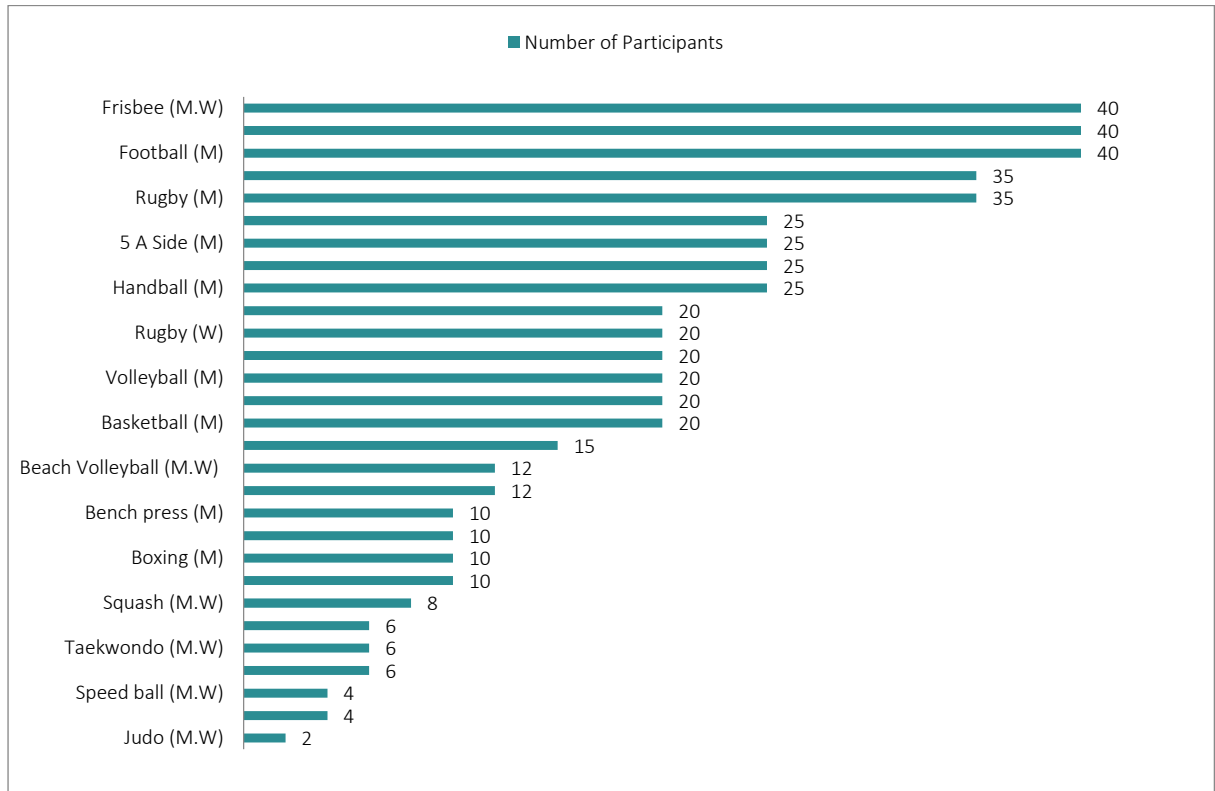
## STUDENT ACTIVITIES

**Table 31: Student Organizations, Academic Year 2015-2016**

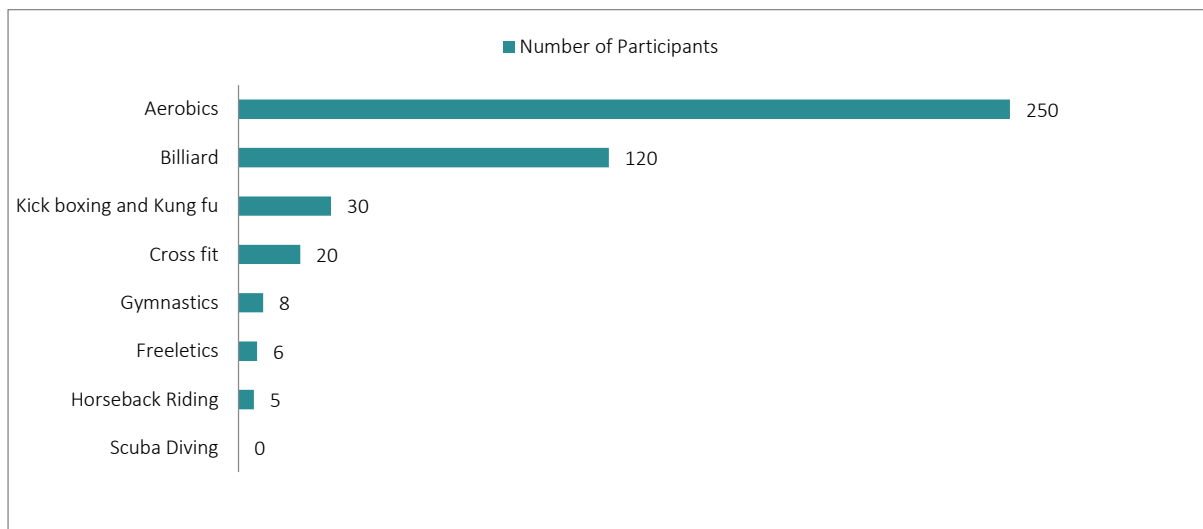
<b>Student Governance</b>
CCC
Student Court
Student Senate
Student Union
<b>Academic Associations</b>
Accounting Association (ACTA)
Actuarial Science Association (ASA)
Architecture Association (AA)
Business Association (BA)
Computer Science and Eng. Association (CSEA)
Construction Engineering Association (CEA)
Economics Association (EA)
Electronics and Communications Engineering Association (ECEA)
Mechanical Engineering Association (MEA)
Political Science Association (PSA)
Society of Petroleum Engineering (SPE)
Society of Physics Students (SPS)
Sociology, Anthropology, Psychology Association (SAPA)
Universal Artists Association (UAA)
<b>Academic Clubs</b>
Astronomy Club
Corporate Governance Club (CGC)
Robotix Club
<b>Cultural &amp; Special Interest</b>
Musicana
Sabeel
Salsa Dance Fusion
Serenity Society
Theatre and Film Club
Folklore Group
Music Group
<b>Community Service Clubs</b>
3alraseef
Resala
Help
VIA
Hand in Hand
Khatwa
Glow
Heya: The Feminist Initiative
ACT
Mashro3 Khair
<b>Press Board</b>
AUC Times
The Insider
<b>Student Conferences</b>
International Student Leadership Conference ISLC
Developers Inc
AIESEC
Entrepreneurs' Society ES
Model Council of Ministries MCM
Student In Free Enterprise - ENACTUS
International Conference on Global Economy ICGE
Finance & Investment Conference FEC
Community of Science & Technological Activities (CSTA)
CIMUN
CIMAL
<b>Graduate Clubs</b>

Biotech  
 Black Student Association (BSA)  
 Business Graduate Association  
 Egyptology Association  
 Helm club  
 Literature Club  
 Philosophy Club  
 STAR  
 Student Association for Latino & Spanish Affairs (SALSA)

**Chart 15: AUC Athletics Team Membership -- Competitive Sports (2015-2016)**



**Chart 16: AUC Athletics Team Membership -- Non-Competitive Sports (2015-2016)**

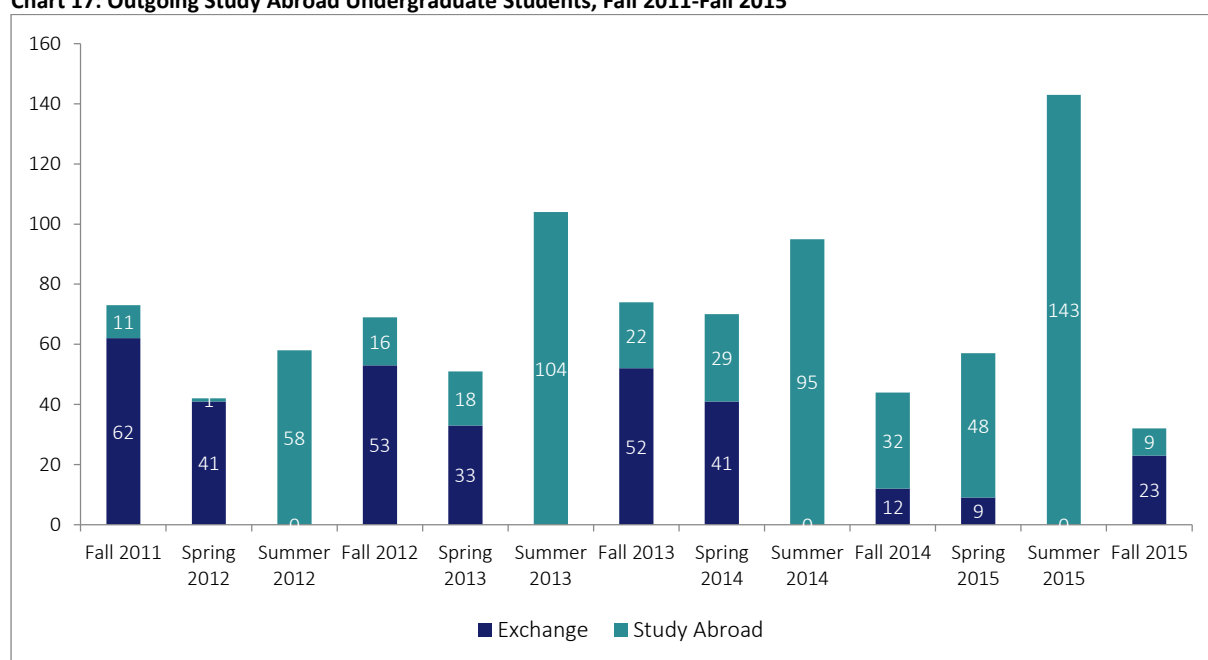


## STUDY ABROAD PROGRAMS

Each year, students from dozens of colleges and universities across North America and around the world enroll at AUC for one or more terms, usually during their third or junior year. Applicants for the Exchange/Study Abroad Program must be enrolled in a program of study at a college or university that has an exchange/study abroad agreement with AUC. Exchange/Study Abroad students may attend AUC for no more than two semesters and a summer session. In addition, AUC offers its degree-seeking students a wide variety of exchange/study abroad opportunities, for a semester or an academic year. AUC has established several exchange and study abroad agreements, with countries that include India, Japan, Singapore, Denmark, France, Germany, Greece, Hungary, Italy, Netherlands, Poland, Portugal, Spain, Sweden, Turkey, the UK, Lebanon, Qatar, Canada, and the US. A full listing of the participating universities, in addition to further description of both undergraduates and graduates programs are available at:

<http://www.aucegypt.edu/studentlife/isa/Pages/default.aspx>

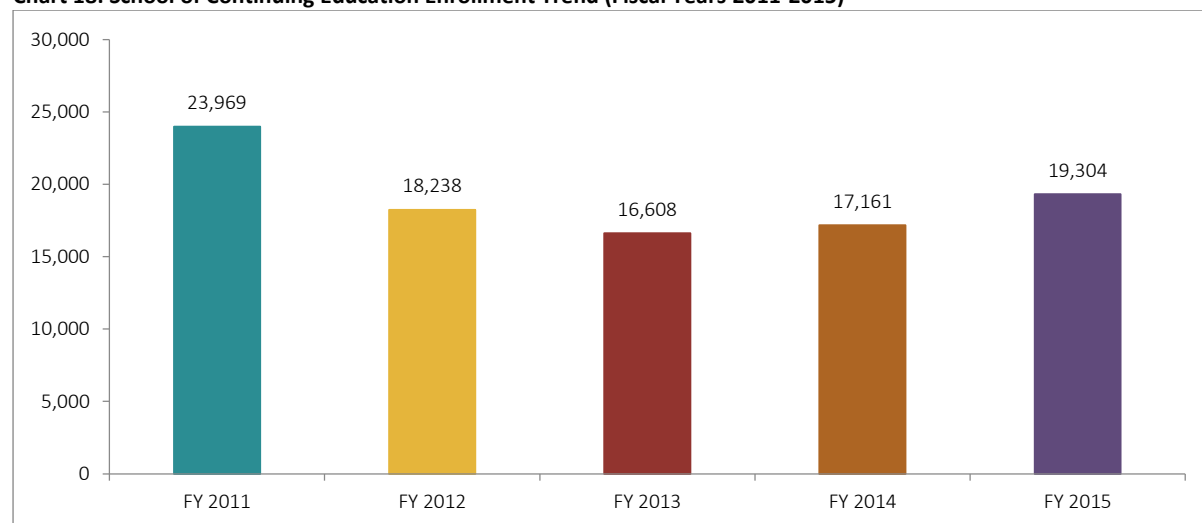
**Chart 17: Outgoing Study Abroad Undergraduate Students, Fall 2011-Fall 2015**



## CONTINUING AND PROFESSIONAL EDUCATION

### School of Continuing Education

**Chart 18: School of Continuing Education Enrollment Trend (Fiscal Years 2011-2015)**



**Table 32: School of Continuing Education Enrollment by Gender (Fiscal Year 2015)**

	Male	Female	Total
Career Development Department	1,496	1,505	3,001
Language Department	7,597	5,469	13,066
Program Partnership Department	1,898	1,339	3,237
<b>Total</b>	<b>10,991</b>	<b>8,313</b>	<b>19,304</b>

SCE enrolled more than 1,000 international students from more than 60 countries in its courses in 2014-2015.

**Table 33: School of Continuing Education Enrollment by Nationality (Fiscal Year 2015)**

	Egyptian	Non-Egyptian	Total
Career Development Department	2,895	106	3,001
Language Department	12,259	807	13,066
Program Partnership Department	2,849	388	3,237
<b>Total</b>	<b>18,003</b>	<b>1,301</b>	<b>19,304</b>

## PROFESSIONAL EDUCATION

### Engineering and Science Services (ESS)

The Engineering and Science Services unit provides high-quality training and services to the Industrial community in Egypt and the Middle East. Its programs include intensive courses, professional certificate programs, distance education, customized training, collaborative certification programs with international agencies, technical assistance and applied research to help the local industry meet the challenges of the international market. In the fiscal year, 2014 - 2015, the Engineering & Science Services offered 12 professional programs, 10 international certificates and more than 200 course between intensive, tailor made in-campus & off-campus. It served 6,000 engineers and scientists. ESS is now a Registered Service Provider "RSP" for Project Management Institute "PMI", The American Society for Engineering Management (ASEM), The American Society of Mechanical Engineers (ASME), and The International Medical Technologist Certification (ASCPI).

### Global Affairs and Public Policy (GAPP) Executive Education

Founded in May 2010, GAPP Executive Education provides top-notch executive training to professionals in the different areas of the School of Global Affairs and Public Policy. GAPP Executive Education dedicates its programs to building capacities of the government and public sector, media officials, members of civil society and nonprofit institutions in Egypt and the region. GAPP Executive Education offers the Transforming Public Service program, open-enrollment and customized programs.

### The Goldman Sachs 10,000 Women Entrepreneurship and Leadership Program

*10,000 Women* is a global initiative supported by The Goldman Sachs Foundation that provides women entrepreneurs around the world with practical business education, business advising, and networking.

Designed in partnership with Babson College, one of the top-ranked entrepreneurship schools in the world, the *10,000 Women* curriculum focuses on practical skills in topics such as planning, negotiation, marketing, and employee management that can immediately be put into practice. Applicants selected for the *10,000 Women* program in Egypt receive a world-class business education at The American University in Cairo (AUC) and connections to a professional support network. The program at AUC has graduated 372 entrepreneurs since its inception in 2008 to date.

### Executive Education (ExecEd)

The AUC School of Business Executive Education (ExecEd) offers globally-recognized executive education programs in three areas: open enrolment, customized and collaborative. The programs feature management curricula that are customized for the needs of executives at all levels who are working in global companies, banking institutions, government agencies, and small and medium enterprises. The programs empower executives with the knowledge, relationships, and leadership tools necessary to drive results at all levels of global management.

ExecEd collaborates closely and engages with corporate companies to identify key business challenges and develop tailored and innovative solutions with a real business impact. Program impact is measured after the completion of the program to assess the learning experience on the business results of the participants' organizations. In year 2014-2015, the School of Business Executive Education conducted 23 open enrollment programs, 64 customized programs and 350 courses. It served 4,200 participants with total training hours of 13,430 in Egypt; as well as The United Arab Emirates.

# Faculty

## FACULTY

### Data Sources

**Faculty:** SAP, Banner, and the Office of the Provost

### Definitions

#### Category:

**Active teaching:** All full-time faculty members who teach at least one course during the reporting period.

**Non-teaching:** All full-time faculty members who are not classified as staff with faculty status who do not teach at least one course during the reporting period. These faculty members include research fellows with no teaching responsibilities and others.

**Paid leave:** All full-time faculty members on paid leave during the reporting period. This includes sabbatical leave, professional development leave, pre-tenure leave, and others. It does not include leave without pay.

**Staff with faculty status:** All full-time faculty members with administrator or staff status. This includes librarians, deans, and others.

#### Faculty:

**Adjunct faculty:** Adjunct faculty members are hired on a per-course basis and typically teach fewer than nine credit hours per semester.

**Full-time faculty:** All full-time faculty including teaching faculty, non-teaching faculty, faculty on paid leave and staff and administrators with faculty status.

**Full-time equivalent faculty:** Each full-time teaching faculty member is counted once. Part-time faculty members are counted based on the percentage of full-time course workload assigned. Full-time unduplicated headcount is added to part-time FTE.

**Instructional faculty:** Full-time faculty whose major regular assignment is instruction. This includes faculty on paid leave and their replacements; it excludes non-teaching faculty such as librarians, administrators and staff with faculty status, and non-teaching research fellows.

**Gender:** The sex, either male (M) or female (F) of the faculty member

**Headcount:** The number of faculty members

**Duplicated headcount:** Faculty members with joint assignments are counted once in each department

**Unduplicated headcount:** Each faculty member is counted once regardless of whether he/she is teaching in one or more department. Faculty members with joint assignments are counted as 0.5 in each department.

**Nationality:** Nationality is reported as primary nationality. If a faculty member has more than one nationality, the primary nationality is the one that appears first on the contract.

**International:** Faculty members whose primary nationality is other than Egyptian.

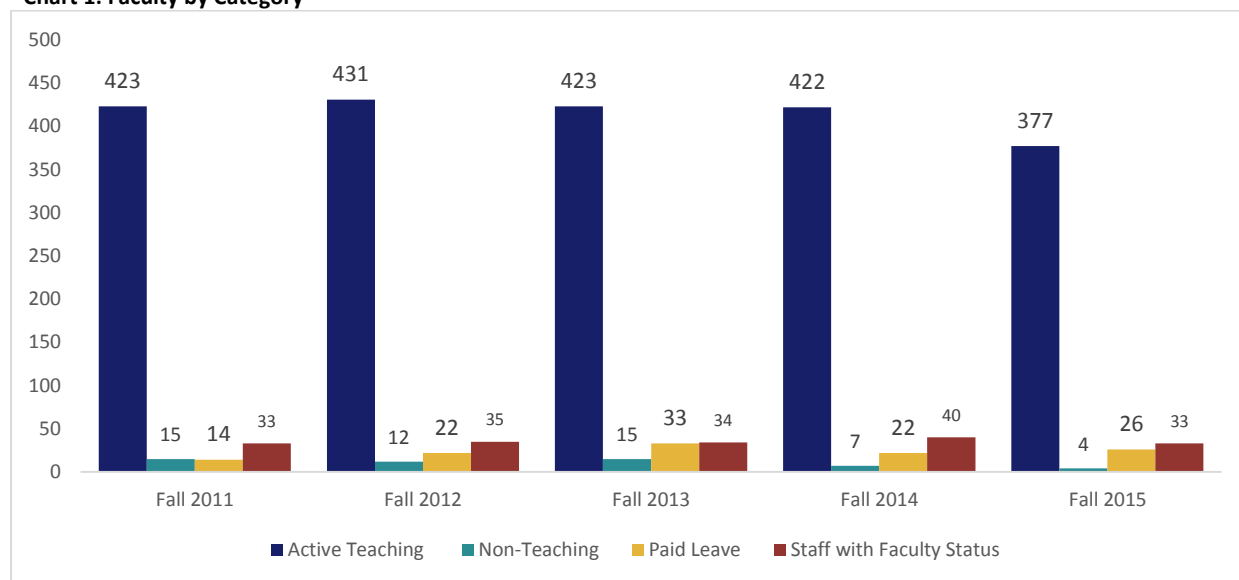
**Tenure status:** Faculty members may be tenured, in a tenure-track appointment, or not on the tenure track. The latter are primarily professors and associate professors of practice, lecturers, visiting professors, and others hired on fixed term contracts.

## FULL-TIME FACULTY

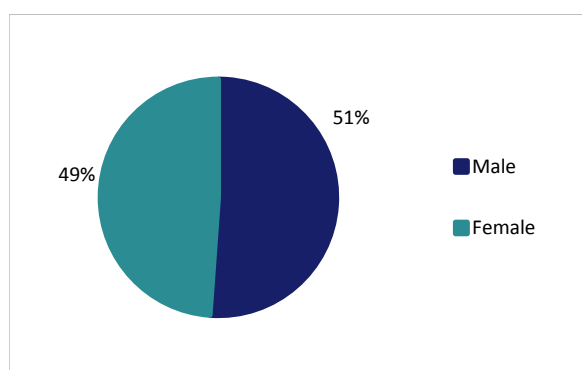
**Table 1: Faculty by Category<sup>25</sup>**

Category	Fall 2011		Fall 2012		Fall 2013		Fall 2014		Fall 2015	
	No.	%	No.	%	No.	%	No.	%	No.	%
Active Teaching	423	87%	431	86%	423	84%	422	86%	377	86%
Non-Teaching	15	3%	12	2%	15	3%	7	1%	4	1%
Paid Leave	14	3%	22	4%	33	7%	22	4%	26	6%
Staff with Faculty Status	33	7%	35	7%	34	7%	40	8%	33	7%
<b>Total</b>	<b>485</b>	<b>100%</b>	<b>500</b>	<b>100%</b>	<b>505</b>	<b>100%</b>	<b>491</b>	<b>100%</b>	<b>440</b>	<b>100%</b>

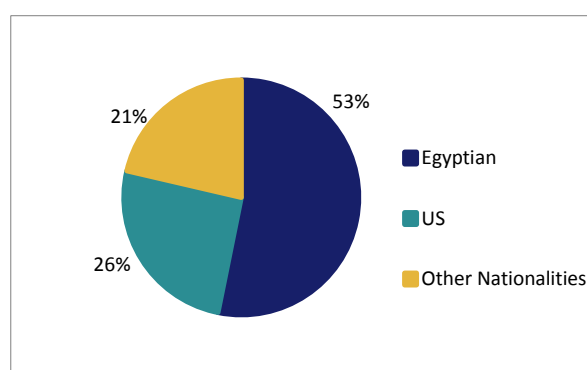
**Chart 1: Faculty by Category**



**Chart 2: Faculty Headcount by Gender, Fall 2015**



**Chart 3: Faculty by Nationality, Fall 2015**



<sup>25</sup> All persons holding paid full-time faculty appointments in unduplicated headcount. This includes temporary faculty and replacements for faculty on leave. Totals do not include faculty on leave without pay. Faculty members with joint appointments are counted once.



Chart 4: Faculty by Rank, Fall 2015

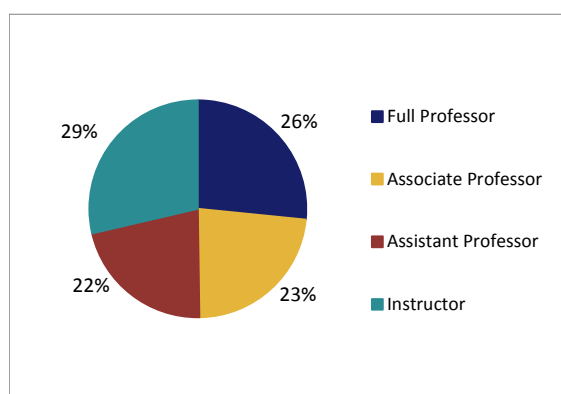
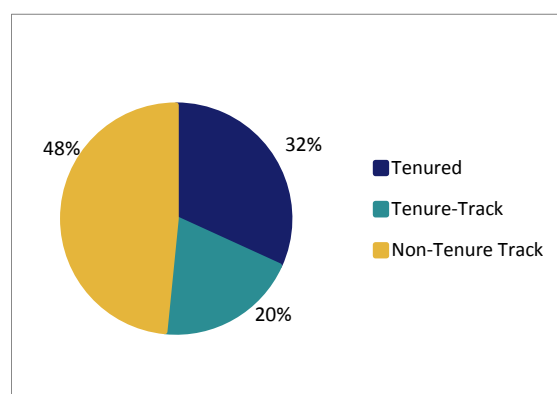


Chart 5: Faculty by Tenure Status, Fall 2015



## INSTRUCTIONAL FACULTY

Table 2: Instructional Faculty by Gender, Fall 2015<sup>26</sup>

	Male	Female	Total
<b>Graduate School of Education</b>	<b>1</b>	<b>7.5</b>	<b>8.5</b>
<b>Academy of Liberal Arts</b>			
Arabic Language Instruction Department	5	20	25
English Language Instruction Department	1	33	34
Rhetoric and Composition Department	13	33	46
<b>Total</b>	<b>19</b>	<b>86</b>	<b>105</b>
<b>School of Business</b>			
Accounting Department	5	2	7
Economics Department	10	3	13
Management Department	20	11	31
<b>Total</b>	<b>35</b>	<b>16</b>	<b>51</b>
<b>School of Global Affairs and Public Policy</b>			
Institute For Gender and Women's Studies	0	1.5	1.5
Journalism and Mass Communication Department	6	6	12
Law Department	4	3	7
Middle East Studies	0	1	1
Migration and Refugee Studies	0	1	1
Public Policy and Administration Department	5	4	9
<b>Total</b>	<b>15</b>	<b>16.5</b>	<b>31.5</b>
<b>School of Humanities and Social Sciences</b>			
Applied Linguistics Department	2	5	7
Arab and Islamic Civilizations Department	3	7	10
Arts Department	8	6	14
English and Comparative Literature Department	4	5	9
History Department	3	4	7
Philosophy Department	6	3	9
Philosophy Department (Core Curriculum)	1	1	2
Political Science Department	12	6	18

<sup>26</sup> Instructional faculty members are defined as full-time faculty whose major regular assignment is instruction. This includes faculty on paid leave and their replacements; it excludes non-teaching faculty such as librarians, administrators and staff with faculty status, and non-teaching research fellows. Figures are given by unduplicated headcount; faculty members with joint appointments are counted as 0.5 in the respective department.

	Male	Female	Total
Sociology, Anthropology, Psychology and Egyptology Department	5	19.5	24.5
Sociology, Anthropology, Psychology and Egyptology Department (Core Curriculum)	3	1	4
<b>Total</b>	<b>47</b>	<b>57.5</b>	<b>104.5</b>
<b>School of Sciences and Engineering</b>			
Biology Department	4	4	8
Chemistry Department	5	3	8
Computer Science and Engineering Department	11	1	12
Construction and Architectural Engineering Department	16	2	18
Core Curriculum	3	0	3
Dean of Sciences and Engineering	0	0.5	0.5
Electronics Engineering Department	7	0	7
Mathematics and Actuarial Science Department	9	3	12
Mechanical Engineering Department	16	3	19
Petroleum and Energy Engineering Department	6	0	6
Physics Department	11	1	12
<b>Total</b>	<b>88</b>	<b>17.5</b>	<b>105.5</b>
<b>Grand Total</b>	<b>205</b>	<b>201</b>	<b>406</b>

**Table 3: Instructional Faculty by Rank, Fall 2015<sup>27</sup>**

	Professor	Associate Professor	Assistant Professor	Instructor	Total
<b>Graduate School of Education</b>	<b>1</b>	<b>5</b>	<b>1.5</b>	<b>1</b>	<b>8.5</b>
<b>Academy of Liberal Arts</b>					
Arabic Language Instruction Department	0	0	0	25	25
English Language Instruction Department	0	0	0	34	34
Rhetoric and Composition Department	0	0	0	46	46
<b>Total</b>	<b>0</b>	<b>0</b>	<b>0</b>	<b>105</b>	<b>105</b>
<b>School of Business</b>					
Accounting Department	1	3	3	0	7
Economics Department	3	3	6	1	13
Management Department	9	13	9	0	31
<b>Total</b>	<b>13</b>	<b>19</b>	<b>18</b>	<b>1</b>	<b>51</b>
<b>School of Global Affairs and Public Policy</b>					
Institute For Gender and Women's Studies	0	0	1.5	0	1.5
Journalism and Mass Communication Department	5	5	2	0	12
Law Department	0	3	3	1	7
Middle East Studies	0	0	1	0	1
Migration and Refugee Studies	0	0	1	0	1
Public Policy and Administration Department	3	3	3	0	9
<b>Total</b>	<b>8</b>	<b>11</b>	<b>11.5</b>	<b>1</b>	<b>31.5</b>
<b>School of Humanities and Social Sciences</b>					
Applied Linguistics Department	1	5	0	1	7
Arab and Islamic Civilizations Department	4	3	3	0	10
Arts Department	3	6	3	2	14
English and Comparative Literature Department	5	2	2	0	9
History Department	1	3	2	1	7
Philosophy Department	3	2	4	0	9
Philosophy Department (Core Curriculum)	0	0	2	0	2

<sup>27</sup> Instructional faculty members are defined as full-time faculty whose major regular assignment is instruction. This includes faculty on paid leave and their replacements; it excludes non-teaching faculty such as librarians, administrators and staff with faculty status, and non-teaching research fellows. Figures are given by unduplicated headcount; faculty members with joint appointments are counted as 0.5 in the respective department.

	Professor	Associate Professor	Assistant Professor	Instructor	Total
Political Science Department	4	7	7	0	18
Sociology, Anthropology, Psychology and Egyptology Department (Core Curriculum)	0	0	4	0	4
<b>Total</b>	<b>28</b>	<b>37</b>	<b>35.5</b>	<b>4</b>	<b>104.5</b>
<b>School of Sciences and Engineering</b>					
Biology Department	4	2	2	0	8
Chemistry Department	5	1	2	0	8
Computer Science and Engineering Department	8	3	1	0	12
Construction and Architectural Engineering Department	10	3	5	0	18
Core Curriculum	0	0	3	0	3
Dean of Sciences and Engineering	0	0.5	0	0	0.5
Electronics Engineering Department	4	3	0	0	7
Mathematics and Actuarial Science Department	4	2	6	0	12
Mechanical Engineering Department	14	2	3	0	19
Petroleum and Energy Engineering Department	3	2	1	0	6
Physics Department	5	3	4	0	12
<b>Total</b>	<b>57</b>	<b>21.5</b>	<b>27</b>	<b>0</b>	<b>105.5</b>
<b>Grand Total</b>	<b>107</b>	<b>93.5</b>	<b>93.5</b>	<b>112</b>	<b>406</b>

**Table 4: Instructional Faculty by Tenure Status, Fall 2015<sup>28</sup>**

	Tenured	Tenure Track	Non Tenure Track	Total
<b>Graduate School of Education</b>	<b>0</b>	<b>3</b>	<b>5.5</b>	<b>8.5</b>
<b>Academy of Liberal Arts</b>				
Arabic Language Instruction Department	0	0	25	25
English Language Instruction Department	0	0	34	34
Rhetoric and Composition Department	0	0	46	46
<b>Total</b>	<b>0</b>	<b>0</b>	<b>105</b>	<b>105</b>
<b>School of Business</b>				
Accounting Department	3	2	2	7
Economics Department	6	6	1	13
Management Department	13	12	6	31
<b>Total</b>	<b>22</b>	<b>20</b>	<b>9</b>	<b>51</b>
<b>School of Global Affairs and Public Policy</b>				
Institute For Gender and Women's Studies	0	0.5	1	1.5
Journalism and Mass Communication Department	3	2	7	12
Law Department	3	2	2	7
Middle East Studies	0	0	1	1
Migration and Refugee Studies	0	1	0	1
Public Policy and Administration Department	2	5	2	9
<b>Total</b>	<b>8</b>	<b>10.5</b>	<b>13</b>	<b>31.5</b>
<b>School of Humanities and Social Sciences</b>				
Applied Linguistics Department	4	1	2	7
Arab and Islamic Civilizations Department	6	3	1	10
Arts Department	7	3	4	14
English and Comparative Literature Department	3	4	2	9
History Department	4	0	3	7
Philosophy Department	5	3	1	9
Philosophy Department (Core Curriculum)	0	1	1	2

<sup>28</sup> Instructional faculty members are defined as full-time faculty whose major regular assignment is instruction. This includes faculty on paid leave and their replacements; it excludes non-teaching faculty such as librarians, administrators and staff with faculty status, and non-teaching research fellows. Figures are given by unduplicated headcount; faculty members with joint appointments are counted as 0.5 in the respective department.

	Tenured	Tenure Track	Non Tenure Track	Total
Political Science Department	8	5	5	18
<b>Total</b>	<b>48</b>	<b>29.5</b>	<b>27</b>	<b>104.5</b>
<b>School of Sciences and Engineering</b>				
Biology Department	3	2	3	8
Chemistry Department	5	2	1	8
Computer Science and Engineering Department	8	1	3	12
Construction and Architectural Engineering Department	8	4	6	18
Core Curriculum	0	0	3	3
Dean of Sciences and Engineering	0	0	0.5	0.5
Electronics Engineering Department	6	1	0	7
Mathematics and Actuarial Science Department	4	6	2	12
Mechanical Engineering Department	11	5	3	19
Petroleum and Energy Engineering Department	0	0	6	6
Physics Department	7	2	3	12
<b>Total</b>	<b>52</b>	<b>23</b>	<b>30.5</b>	<b>105.5</b>
<b>Grand Total</b>	<b>130</b>	<b>86</b>	<b>190</b>	<b>406</b>

**Table 5: Instructional Faculty by Nationality, Fall 2015<sup>29</sup>**

	Egypt	USA	Other	Total
<b>Graduate School of Education</b>	<b>3.5</b>	<b>3</b>	<b>2</b>	<b>8.5</b>
<b>Academy of Liberal Arts</b>				
Arabic Language Instruction Department	23	1	1	25
English Language Instruction Department	22	9	3	34
Rhetoric and Composition Department	21	16	9	46
<b>Total</b>	<b>66</b>	<b>26</b>	<b>13</b>	<b>105</b>
<b>School of Business</b>				
Accounting Department	6	1	0	7
Economics Department	7	2	4	13
Management Department	23	3	5	31
<b>Total</b>	<b>36</b>	<b>6</b>	<b>9</b>	<b>51</b>
<b>School of Global Affairs and Public Policy</b>				
Institute For Gender and Women's Studies	0	0.5	1	1.5
Journalism and Mass Communication Department	7	3	2	12
Law Department	1	2.5	3.5	7
Middle East Studies	0	0	1	1
Migration and Refugee Studies	0	0.5	0.5	1
Public Policy and Administration Department	4	2	3	9
<b>Total</b>	<b>12</b>	<b>8.5</b>	<b>11</b>	<b>31.5</b>
<b>School of Humanities and Social Sciences</b>				
Applied Linguistics Department	5	2	0	7
Arab and Islamic Civilizations Department	4	3	3	10
Arts Department	5	6	3	14
English and Comparative Literature Department	2	6	1	9
History Department	1	5	1	7
Philosophy Department	0	3	6	9
Philosophy Department (Core Curriculum)	0	2	0	2
Political Science Department	7	2	9	18
Sociology, Anthropology, Psychology and Egyptology Department	7	8.5	9	24.5

<sup>29</sup> Instructional faculty members are defined as full-time faculty whose major regular assignment is instruction. This includes faculty on paid leave and their replacements; it excludes non-teaching faculty such as librarians, administrators and staff with faculty status, and non-teaching research fellows. Figures are given by unduplicated headcount; faculty members with joint appointments are counted as 0.5 in the respective department.

	Egypt	USA	Other	Total
Sociology, Anthropology, Psychology and Egyptology Department (Core Curriculum)	0	2	2	4
<b>Total</b>	<b>31</b>	<b>39.5</b>	<b>34</b>	<b>104.5</b>
<b>School of Sciences and Engineering</b>				
Biology Department	3	1	4	8
Chemistry Department	4	1	3	8
Computer Science and Engineering Department	10	2	0	12
Construction and Architectural Engineering Department	14	3	1	18
Core Curriculum	2	0	1	3
Dean of Sciences and Engineering	0.5	0	0	0.5
Electronics Engineering Department	5	1	1	7
Mathematics and Actuarial Science Department	5	4	3	12
Mechanical Engineering Department	14	3	2	19
Petroleum and Energy Engineering Department	4	1	1	6
Physics Department	11	0	1	12
<b>Total</b>	<b>72.5</b>	<b>16</b>	<b>17</b>	<b>105.5</b>
<b>Grand Total</b>	<b>221</b>	<b>99</b>	<b>86</b>	<b>406</b>

## FULL-TIME EQUIVALENT FACULTY

Table 6: Full-Time Equivalent (FTE) Faculty by Department/Unit, Fall 2015<sup>30</sup>

	Full-Time Headcount	Part-Time FTE	Total FTE
<b>Graduate School of Education</b>	<b>6.5</b>	<b>0.0</b>	<b>6.5</b>
<b>Academy of Liberal Arts</b>			
Arabic Language Instruction Department	25.0	0.0	<b>25.0</b>
English Language Instruction Department	34.0	0.0	<b>34.0</b>
Rhetoric and Composition Department	44.0	2.3	<b>46.3</b>
<b>Total</b>	<b>103.0</b>	<b>2.3</b>	<b>105.3</b>
<b>School of Business</b>			
Accounting Department	6.0	3.3	<b>9.3</b>
Economics Department	12.0	9.4	<b>21.4</b>
Management Department	27.0	12.2	<b>39.2</b>
<b>Total</b>	<b>45.0</b>	<b>24.9</b>	<b>69.9</b>
<b>School of Global Affairs and Public Policy</b>			
Institute For Gender and Women's Studies	1.5	0.0	<b>1.5</b>
Journalism and Mass Communication Department	12.0	9.3	<b>21.3</b>
Law Department	7.0	0.0	<b>7.0</b>
Middle East Studies	1.0	0.0	<b>1.0</b>
Migration and Refugee Studies	1.0	0.0	<b>1.0</b>
Public Policy and Administration Department	9.0	1.0	<b>10.0</b>
<b>Total</b>	<b>31.5</b>	<b>10.3</b>	<b>41.8</b>
<b>School of Humanities and Social Sciences</b>			
Applied Linguistics Department	6.0	0.0	<b>6.0</b>
Arab and Islamic Civilizations Department	8.0	5.7	<b>13.7</b>
Arts Department	13.0	18.2	<b>31.2</b>
English and Comparative Literature Department	8.0	0.0	<b>8.0</b>
History Department	6.0	1.0	<b>7.0</b>
Philosophy Department	8.0	0.7	<b>8.7</b>
Political Science Department	17.0	5.7	<b>22.7</b>
Sociology, Anthropology, Psychology and Egyptology Department	23.5	10.7	<b>34.2</b>
<b>Total</b>	<b>89.5</b>	<b>41.9</b>	<b>131.4</b>
<b>Dean of Undergraduate Studies</b>			
Core Curriculum	<b>0.0</b>	<b>2.8</b>	<b>2.8</b>
<b>School of Sciences and Engineering</b>			
Biology Department	7.0	0.7	<b>7.7</b>
Chemistry Department	8.0	8.7	<b>16.7</b>
Computer Science and Engineering Department	10.0	2.0	<b>12.0</b>
Construction and Architectural Engineering Department	17.0	18.5	<b>35.5</b>
Dean of Sciences and Engineering	0.5	15.3	<b>15.8</b>
Electronics Engineering Department	7.0	4.1	<b>11.1</b>
Mathematics and Actuarial Science Department	12.0	12.7	<b>24.7</b>
Mechanical Engineering Department	18.0	4.8	<b>22.8</b>
Petroleum and Energy Engineering Department	6.0	2.9	<b>8.9</b>
Physics Department	12.0	3.5	<b>15.5</b>
Scientific Thinking	3.0	2.3	<b>5.3</b>
<b>Total</b>	<b>100.5</b>	<b>75.5</b>	<b>176.0</b>
<b>Grand Total</b>	<b>376.0</b>	<b>157.8</b>	<b>533.8</b>

<sup>30</sup> Figures are given by unduplicated headcount. The headcount of full-time faculty is composed of teaching faculty only, i.e. those full-time faculty members who teach at least one course during the reporting period. Faculty members with joint appointments are counted as 0.5 in each respective department.

# Teaching and Academic Support

## TEACHING

Table 1: Credit Hours Taught by School and Type of Faculty, Fall 2015

	Full Time Faculty		Part Time Faculty		Total
	No. of Credit Hours	%of Total Credit Hours	No. of Credit Hours	%of Total Credit Hours	
<b>Graduate School of Education</b>	<b>333</b>	<b>100%</b>	<b>0</b>	<b>0%</b>	<b>333</b>
<b>Academy of Liberal Arts</b>					
Arabic Language Instruction Department	865	100%	0	0%	865
English Language Instruction Department	750	100%	0	0%	750
Rhetoric and Composition Department	6,981	97%	213	3%	7,194
<b>Total</b>	<b>8,596</b>	<b>98%</b>	<b>213</b>	<b>2%</b>	<b>8,809</b>
<b>School of Business</b>					
Accounting Department	1,648	65%	897	35%	2,545
Economics Department	3,018	53%	2,704	47%	5,722
Management Department	5,596	63%	3,285	37%	8,881
No Department Affiliated	261	100%	0	0%	261
<b>Total</b>	<b>10,523</b>	<b>60%</b>	<b>6,886</b>	<b>40%</b>	<b>17,409</b>
<b>School of Global Affairs and Public Policy</b>					
Institute of Gender & Women's Studies	42	100%	0	0%	42
Journalism and Mass Communication Department	1,890	52%	1,716	48%	3,606
Law Department	486	100%	0	0%	486
Middle East Studies	51	100%	0	0%	51
Public Policy and Administration Department	805	91%	75	9%	880
<b>Total</b>	<b>3,274</b>	<b>65%</b>	<b>1,791</b>	<b>35%</b>	<b>5,065</b>
<b>School of Humanities and Social Sciences</b>					
Applied Linguistics Department	333	100%	0	0%	333
Arab and Islamic Civilizations Department	1,086	43%	1,452	57%	2,538
Arts Department	1,839	38%	3,041	62%	4,880
English and Comparative Literature Department	915	100%	0	0%	915
History Department	1,236	92%	114	8%	1,350
Philosophy Department	1,230	87%	177	13%	1,407
Philosophy/Core Curriculum	450	100%	0	0%	450
Political Science Department	2,286	66%	1,200	34%	3,486
Sociology, Anthropology, Psychology and Egyptology/Core Curriculum	924	100%	0	0%	924
Sociology, Anthropology, Psychology and Egyptology Department	2,749	53%	2,445	47%	5,194
<b>Total</b>	<b>13,048</b>	<b>61%</b>	<b>8,429</b>	<b>39%</b>	<b>21,477</b>
<b>School of Sciences and Engineering</b>					
Biology Department	977	96%	44	4%	1,021
Chemistry Department	889	40%	1,330	60%	2,219
Computer Science and Engineering Department	2,138	76%	669	24%	2,807
Construction and Arch Engineering Department	3,470	60%	2,286	40%	5,756
Electronics Engineering Department	876	70%	374	30%	1,250
Mathematics and Actuarial Science Department	2,569	44%	3,208	56%	5,777
Mechanical Engineering Department	3,363	87%	492	13%	3,855
Petroleum and Energy Engineering Department	1,183	72%	470	28%	1,653
Physics Department	2,255	84%	442	16%	2,697
Scientific Thinking/Core Curriculum	0	0%	354	100%	354
Unassigned	60	2%	2,493	98%	2,553
<b>Total</b>	<b>17,780</b>	<b>59%</b>	<b>12,162</b>	<b>41%</b>	<b>29,942</b>
<b>Libraries &amp; Learning Technology</b>	<b>87</b>	<b>100%</b>	<b>0</b>	<b>0%</b>	<b>87</b>
<b>School of Graduate Studies</b>	<b>57</b>	<b>100%</b>	<b>0</b>	<b>0%</b>	<b>57</b>
<b>School of Undergraduate Studies</b>					
Core Curriculum	0	0%	441	100%	441
Scientific Thinking/Core Curriculum	637	100%	0	0%	637
<b>Total</b>	<b>637</b>	<b>59%</b>	<b>441</b>	<b>41%</b>	<b>1,078</b>
<b>Grand Total</b>	<b>54,335</b>	<b>64%</b>	<b>29,922</b>	<b>36%</b>	<b>84,257</b>



## LIBRARIES AND LEARNING TECHNOLOGIES (LLT)

AUC Libraries and Learning Technologies consist of the Libraries (Main Library, the Rare Books and Special Collections Library, and the Tahrir Library) as well as the Center for Learning and Teaching.

**Main Library:** The AUC Library contains the largest English-language research collection in the region and is an active and integral part of the University's pursuit of excellence in all academic and scholarly programs. The mission of the AUC Library is to support the instructional and research needs of the AUC community, facilitating the transformation of information to knowledge, by providing personalized services and a robust online environment. AUC Library is accessible online at: <http://library.aucegypt.edu/>

**AUC Tahrir Library:** The AUC Tahrir Library provides academic support primarily for the eligible students of the School of Continuing Education, the Engineering and Science Services, the Management Center and the Graduate School of Education. Located on the third floor of the Falaki Academic Center at AUC's downtown campus, the library operates as an electronic library providing direct access to the AUC Library's LibraryOne Search, catalog and academic databases, as well as the full scope of the Internet.

**Rare Books and Special Collections Library:** The Rare Books and Special Collections Library supports research and teaching in the arts, culture, and society of Egypt and the Middle East. The library documents ancient, medieval, and modern Egypt and the wider region, with particular strengths in Egyptology, Islamic Art and Architecture, and travel literature, the focus of extensive rare and contemporary book collections. The library also collects archival and manuscript collections reflecting modern Egyptian social, cultural, and intellectual life. In addition, the library houses AUC's University Archives, which maintains records relating to the university's history dating to the early twentieth century. The Rare Books and Special Collections Library is available online at: <http://library.aucegypt.edu/rbscl/index.html>

Table 2: LLT by the Numbers

	2014-2015
<b>Library collections</b>	
Total print volumes (books, bound journals, etc.)	512,980
Electronic subscriptions	133
Microforms: Books, theses	2,663
Audio materials	129
Video materials	3,735
Music scores	242
Maps	402
<b>Number of library visits per day</b>	2,250
<b>Circulation of library materials</b>	31,169
<b>Reserve items used</b>	38,906
<b>Library instruction sessions</b>	798
<b>Reference questions answered</b>	3,936
<b>Electronic information resources and access</b>	
Searches performed using library catalog	5,813,217
Total full-text documents retrieved from databases	635,479

**Center for Learning and Teaching:** The mission of the Center for Learning and Teaching (CLT) at AUC is to create a stimulating learning environment by promoting excellence in teaching, facilitating the effective application of technology to the teaching and learning process, providing support and resources, and engaging in outreach activities. The center keeps a spotlight on teaching through a variety of programs, services and events, including weekly workshops, faculty development institutes, a biweekly newsletter, instructional design consultations, formative assessment activities, Classroom Action Research (CAR) and the Student Technology Assistant (STA) program which provides one-to-one training and support for faculty members on a variety of instructional technologies. CLT is also a strong advocate of academic integrity on campus and contributes to its enhancement by administering the plagiarism detection software Turnitin.com as well as conducting dedicated workshops. Information on the Center for Learning and Teaching is available online at: [www.aucegypt.edu/llt/clt](http://www.aucegypt.edu/llt/clt)

## INFORMATION TECHNOLOGY SERVICES

The Office of Information Technology (IT) serves the AUC community through providing the technology needed to support AUC's goals and objectives. The Office of IT is responsible for the AUC network, telecommunication, Internet services, systems, data centers, central data storage and IT security and for technology in all AUC premises, including student and faculty housing and AUC buses. IT is also responsible for technology in the classrooms and event halls, in addition to video conferencing and video streaming services. IT staff plan, design, develop, implement and maintain AUC's critical administrative and academic systems, including the student information system, learning management systems, AUC financial system, web services and web development. The office also manages campus wide software licensing and provides desktop support and IT training to the AUC community. IT supports open access labs, including those located in the student housing, a specialized multimedia lab and a lab for the special needs students (visually impaired and hearing impaired).

The IT team consists of:

- **University Technology Infrastructure (UTI):** Responsible for the AUC network, telecommunication, Internet services, systems and data centers, central data storage and IT security
- **University Academic Computing Services (UACT):** Responsible for academic services (Learning management systems and course evaluation), in addition to all web services, open access labs, multimedia labs, labs for special needs, software licensing and campus-wide desktop support
- **University Information Systems (UIS):** Responsible for administrative systems (Student Information System, Enterprise Resource Planning System, funds management system, and content management system) in addition to AUC's central database administration
- **Classroom Technologies and Media Services (CTMS):** Responsible for technology in classrooms and event halls, in addition to video conferencing and video streaming services
- **IT Service Help Desk Team:** AUC's one-stop shop for IT problem-solving

More information is available at <http://www.aucegypt.edu/IT/Pages/default.aspx>

**Table 3: Classroom Technologies and Media Services (CTMS), Academic Years 2014-2015**

	AY2014	AY2015
<b>Academic spaces</b>		
Technology-equipped classrooms	261	277
Active learning classrooms	1	1
Spaces supported with circulation resources	307	309
<b>Video conferencing</b>		
Classrooms	3	3
Conference rooms	5	5
Mobile units	2	2
Number of VC sessions	-	91 <sup>31</sup>
Hours	236	106 <sup>31</sup>
<b>Media production and event support services</b>		
Course sessions captured	136	170
Special event sessions captured or streamed	11	14
Total events supported	1,647	1,613

<sup>31</sup> These numbers do not include administrative sessions done by academic schools

## COMMUNITY-BASED LEARNING

The Community-Based Learning (CBL) program, established in Fall 2008 as part of the campus infrastructure to develop and enhance civic engagement for students, aims to support and foster community-based learning, which is an experiential learning pedagogy that advances articulated learning goals through student service to a community partner. The CBL program was originally established and managed by both the John D. Gerhart Center for Philanthropy and Civic Engagement and the Center for Learning and Teaching. In 2012-2013, the program was moved to the Office of the Dean of Undergraduate Studies and is administered by the Academic Community Engagement Program (ACE). Launched from the classroom and lectures, readings, and discussions, students apply academic theories and innovative thinking in co-developmental, hands-on service with local, Egyptian, and international communities. During the summer of 2015 ACE extended the community reach to Egyptian School Teachers and 20 of them were given intensive professional development courses in English language and IT.

**Table 4: CBL Activities, Academic Years 2011-2016**

	AY2011	AY2012	AY2013	AY2014	AY2015	AY2016
Number of CBL courses offered	56	70	31	25	16	51
Number of enrolled students/CBL projects	840	1,050	889	856	520	1,112

## UNDERGRADUATE RESEARCH

The Undergraduate Research Program offers support for undergraduate students engaging in research and creative work, both inside and outside of class. The mission of the Undergraduate Research program is to:

- institutionalize, support and expand opportunities for undergraduate student research and creative achievement
- nurture, amongst the academic community across the disciplines, the drive to advance the liberal education outcomes of undergraduate inquiry and critical and creative competence.

More information is available at <http://www.aucegypt.edu/research/Undergraduate/Pages/default.aspx>

# Research

## RESEARCH CENTERS

### **Access to Knowledge for Development Center (A2K4D)**

The Access to Knowledge for Development Center (A2K4D) is a culmination of collaborative research activities since 2007, working on access to knowledge in Egypt and globally. A2K4D was officially launched in February 2010 as a regional research center established to fill a void in academic scholarship in the area of knowledge and development in Egypt and the Arab World. A2K4D fosters rigorous policy-oriented research that conceptualizes and investigates the economic and legal challenges that face access to knowledge, and the implications that these have on human development. At the heart of A2K4D is the belief in the integral role that access and contribution to knowledge can play in promoting sustainable human development, particularly in the digital age.

A2K4D has worked closely with partners in Brazil, China, India, South Africa and the United States on research and advocacy in the area of access to knowledge and development. Together, they launched the Access to Knowledge Global Academy (A2KGA) in September 2008. A2KGA is part of the global Access to Knowledge (A2K) movement, which strives to promote production and equitable distribution of knowledge goods and tools in a way that advances human freedom and development. A2K4D is the recipient of the Richard Bartlett Gift to support collaboration with Yale Law School's Information Society project (ISP). A2K4D also serves as the North Africa hub for the Open Africa Innovation and Research (Open A.I.R.) project, expanding the center's collaboration within the African continent.

### **AUC Forum**

The AUC Forum highlights issues that bridge the Middle East and the wider world by applying academic standards to the discussion and analysis of policy-oriented topics. To this end, the AUC Forum, alone or in collaboration with national, regional, and international institutions, holds conferences, workshops, and panels on timely topics crucial to the region and the world in the twenty-first century. In addition, the AUC Forum is increasingly involved in international research activities, for example with the European Union, the United Nations Development Program... As a result, the AUC Forum published extensively on topics of Arab foreign policies, changing Middle East dynamics, development problems, and challenges of democratic transitions (for details, visit the AUC Forum website at <http://www.aucegypt.edu/research/forum>)

### **Center for Migration and Refugee Studies**

The Center for Migration and Refugee Studies (CMRS) is an interdisciplinary center of the School of Global Affairs and Public Policy at AUC. Situated at the heart of the Middle East and North Africa, it aims at furthering scientific knowledge of the large, longstanding, and more recent, refugee and migration movements in this region. It is also concerned with questions of refugees and migration in the international system as a whole, at theoretical and practical levels. CMRS functions include education, research, training and outreach. It offers an MA in migration and refugee studies as well as a graduate diploma in the same field, working with other AUC departments to offer diversified multidisciplinary courses to its students. Its research bears on issues of interest to the region and beyond. In carrying it out, CMRS collaborates with reputable regional and international academic institutions, as well as international and nongovernmental organizations. The training activities CMRS organizes are attended by researchers, policymakers, bureaucrats and civil society activists from countries all over the world. It also provides tailor-made training programs on demand. CMRS outreach involves working within its environment, disseminating knowledge and sensitization to refugee and migration issues. It also provides services to the refugee community in Cairo and transfers its expertise in this respect to other international institutions.

### **The Center for Translation Studies (CTS)**

The Center for Translation Studies is a research facility that fosters collaborative outreach programs and research in translation and translation studies within an interdisciplinary context.

**Citadel Capital Financial Services Center (CCFC)**

The Citadel Capital Financial Services Center is dedicated to enhancing financial education and research through the use of high-tech financial information technology, fulfilling the need for real and timely financial data flow and contributing to the development of new financial products and applications through an array of databases and software programs. CCFC's role has encompassed designing and delivering innovative student-centered activities including workshops, guest-lectures, competitions, and certification programs. CCFC also fosters research endeavors by providing access to world-class portfolio of financial databases through a partnership with Thomson Reuters, the world's leading source of business information. In addition, CCFC offers users open and customized training workshops on utilizing the available financial databases and software programs. In an effort to promote financial knowledge and raise awareness about the latest developments in the financial market, CCFC publishes a weekly newsletter covering local, regional and international market performance. More than 2500 students, faculty, staff and alumni have benefited from the center's resources and activities over the past nine years.

**Cynthia Nelson Institute for Gender and Women's Studies**

The Institute for Gender and Women's Studies is a multipurpose and interdisciplinary MA graduate program and research center that serves scholars interested in gender and women's studies in the Middle East/North Africa, South Asia and Africa.

**Economic and Business History Research Center (EBHRC)**

The Economic and Business History Research Center (EBHRC) was established in early 2004 with the goal of creating a repository of primary recordings of first-hand accounts to Egypt's contemporary history with special emphasis on economic and business history. In a country rich in events and history and comparably poor in transparency and in accessibility of records, the center perceived its task as capturing the untold history, the stories and narratives locked up in the memories of people.

**Kamal Adham Center for Television and Digital Journalism**

The Kamal Adham Center for Television and Digital Journalism provides professional training to the Egyptian and international broadcast and journalism communities, in addition to its Master of Arts program. Media professionals take workshops in voice coaching, video editing, TV studio directing, camera operation, television reporting, documentary filmmaking, still photography and multimedia. Facilities include two state-of-the-art television-studios, digital newsroom, video editing labs, and professional high-definition video cameras serving the New Cairo and Tahrir Square campuses. The Center also collaborates with international agencies to conduct public service and digital journalism projects. The Center can arrange for custom designed courses and training for organizations.

**El Khazindar Business Research and Case Center**

El Khazindar Business Research and Case Center provides world-class case studies and other educational services offering students outstanding participant-centered learning tools. KCC's services are dedicated to developing top caliber students, connecting businesses and students in the region and ultimately contributing to the betterment of the society through academic research and practical applications.

**John D. Gerhart Center for Philanthropy and Civic Engagement**

Established in honor of AUC's former president, the John D. Gerhart Center for Philanthropy and Civic Engagement consolidates university activities aimed at encouraging engaged citizenship and service and promotes philanthropic giving in the Arab region. Combining learning, research, service and advocacy, the center works to expand the boundaries of philanthropy, moving it beyond charity toward social justice and development. In 2014, the center became a part of the School of Business, consequently, a new pillar added to its core mission which Responsible Business. Through the Responsible Business unit the center will play a vital role as linkage between civic society and private sector by identifying the social requirements and guide the private sector in their social investments plans for better effective civic business practices.

Gerhart Center Mission: To serve as a regional incubator for knowledge, responsible business practices, civic leadership and capacity building to promote effective social responsibility.

Gerhart Center Vision: To strengthen the culture of social responsibility through philanthropy, as well as effective civic and business engagement in the Arab region.

**Middle East Studies Center (MESC)**

The Middle East Studies Center of the American University in Cairo offers its students a unique opportunity to engage with one of the world's most fascinating regions. Our students, graduate and undergraduate alike, benefit from a wide array of courses sampling from various departments and academic disciplines. The interdisciplinary nature of the programs allows students to structure their studies with considerable freedom and prepare for myriad career options.

**Prince Alwaleed Bin TalalAlSaud Center for American Studies and Research**

The Prince Alwaleed Bin TalalAlSaud Center for American Studies and Research serves as a catalyst for independent research in American studies both within the university and with the outside community by providing intellectual and information resources to support those wishing to study the United States more fully.

**Research Institute for a Sustainable Environment (RISE)**

RISE serves as a multidisciplinary institute dedicated to promoting research in sustainable environment in Egypt, the Middle East and North Africa. Housed on the New Cairo campus, RISE carries forward the Desert Development Center's (DDC) legacy and many of its research and training activities. The institute represents a reaffirmation and strengthening of AUC's commitment to sustainable environmental education and research in Egypt and the region. Building on the accomplishments of the DDC in natural resource management, renewable energy and sustainable agriculture in desert areas, RISE has the expanded mission to promote sustainability in a diversity of environments in Egypt and the region, including rural and urban, desert and temperate, through applied research, education and training programs. RISE operates a research station and outreach center for educational programs, technical training and community services at Sadat City. On campus, the institute is designed to provide new opportunities for AUC students to learn and engage with the environment and related sustainability issues. RISE research facilities on campus provide students with a living learning laboratory in which to seek solutions to real-life resource and environment problems.

**Social Research Center**

The Social Research Center's mission is to conduct and encourage multidisciplinary social science research in Egypt and the Arab region. This mission is fulfilled through the center's two main activities, namely conducting research and building capacities. The center is engaged in many research projects both at the national and regional levels and has distinct reputation in carrying out high quality field studies and in depth analytical research. It also has excelled in the area of building social research capacities for students, scholars and organizations engaged in social science research in the region and in different outreach activities.

**Yousef Jameel Science and Technology Research Center**

The Science and Technology Research Center supports a variety of nanoscience and technology-oriented projects. Research activities are centered around generic imaging, analysis and fabrication equipment and focus on nanomaterials characterization and design and fabrication of micro-opto-electromechanical systems.

## SPONSORED RESEARCH

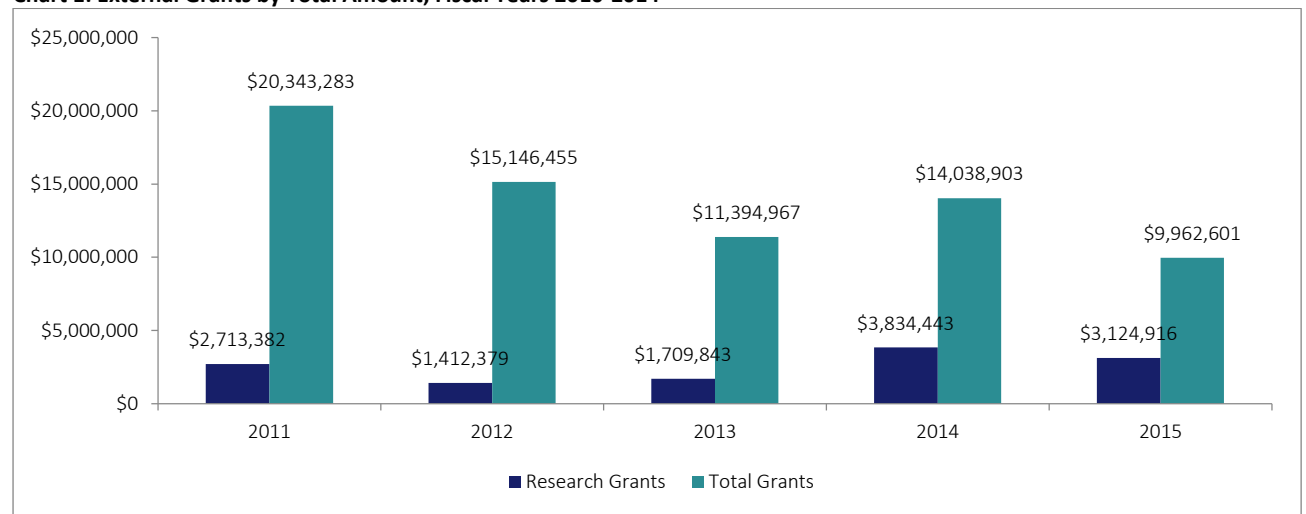
### Sponsored Programs

The Office of Sponsored Programs represents the university in its dealings with governments, foundations and corporations that sponsor projects. The office helps faculty members to identify potential funding sources, develop proposals and administer their grants in compliance to sponsors' requirements.

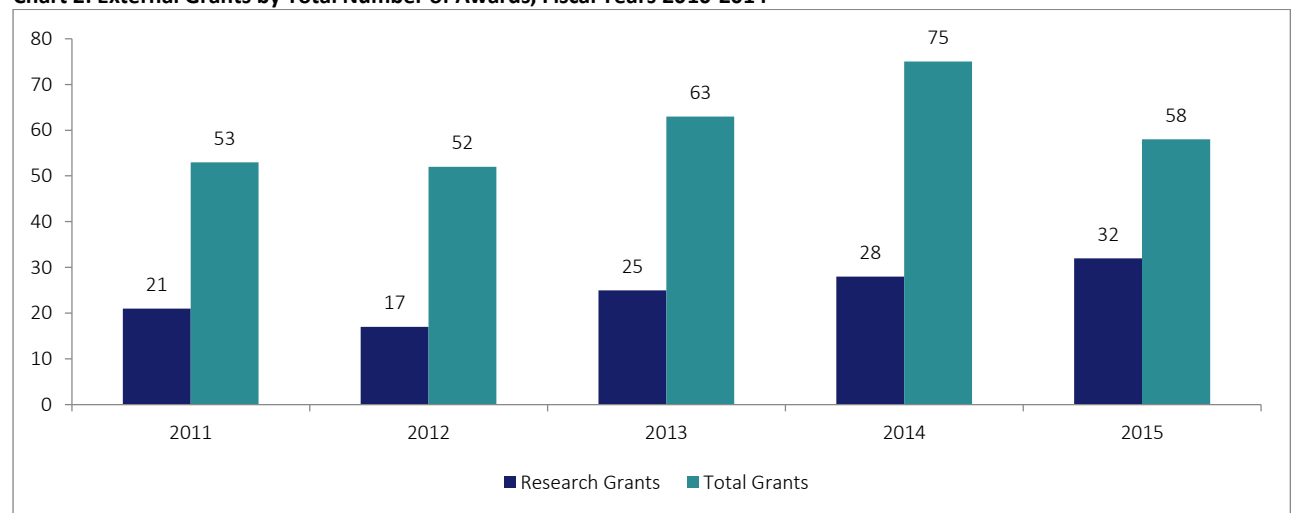
**Table 1: External Grants by Total Amount and Number of Awards, Fiscal Years 2011-2015<sup>32</sup>**

	2011		2012		2013		2014		2015	
	Total (USD)	No.	Total (USD)	No.	Total (USD)	No.	Total (USD)	No.	Total (USD)	No.
Research Grants	\$2,713,380	21	\$1,428,879	17	\$1,826,353	26	\$3,931,105	28	\$3,124,915	32
Total Grants	\$20,335,041	53	\$15,395,557	52	\$11,445,839	63	\$14,135,565	75	\$9,962,601	58

**Chart 1: External Grants by Total Amount, Fiscal Years 2010-2014**



**Chart 2: External Grants by Total Number of Awards, Fiscal Years 2010-2014**



<sup>32</sup> Source: Office of Sponsored Programs. Non-research grants are grants for functions other than research such as fellowships, non-teaching activities, and auxiliary services.



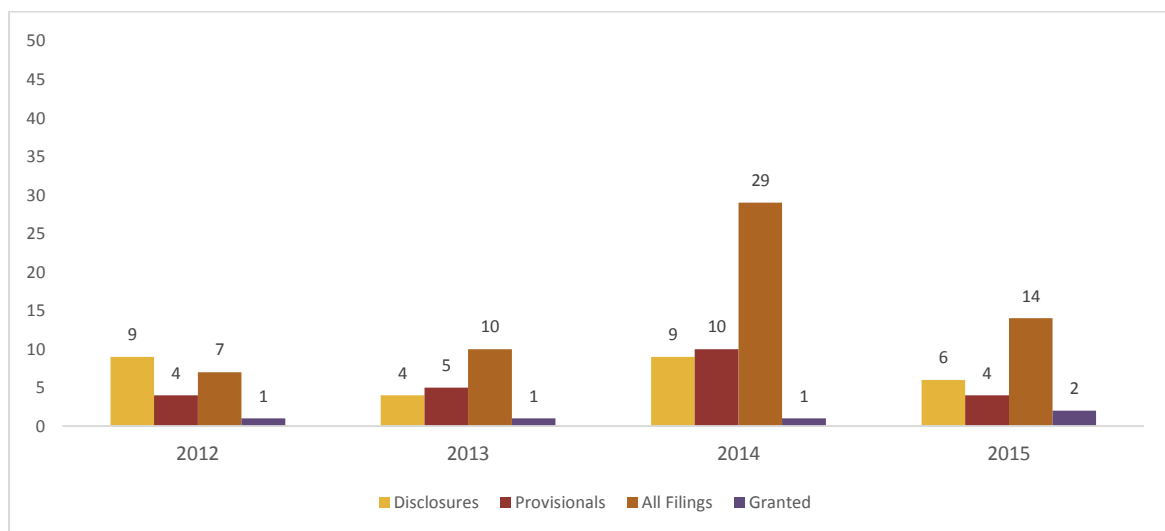
## TECHNOLOGY TRANSFER

The Technology Transfer Office (TTO) was established to benefit the global public by creating opportunities for AUC's innovators to maximize the impact of AUC innovative technologies, breakthroughs and discoveries through licensing to companies or spin-outs while generating revenue to support research and education.

The Technology Transfer Office:

- manages and protects intellectual property rights (IPR) of inventors and the university
- manages AUC's patent portfolio
- evaluates patentable ideas and assesses their commercial value
- provides advice and consultation focused on IP and technology commercialization related aspects
- actively prospects and negotiates licensing opportunities on behalf of AUC
- licenses AUC Intellectual Property to companies or entrepreneurial teams with high potential to successfully commercialize the technology into a high impact product or service
- advises and develops IP management policies, strategy, and procedures on campus
- assists and informs researchers and inventors on invention disclosure
- holds general awareness meetings, events, and presentations discussing intellectual property, technology commercialization and other related subjects

**Chart 3: Innovation Disclosures & Patents FY2012-FY2015<sup>33</sup>**



<sup>33</sup> Source: Office of Technology Transfer

# Alumni

## ALUMNI

### Data Source:

The data used for the alumni section of this Factbook are from the university's alumni database as of June 30, 2014, and are provided by the Office of Alumni and Trustees Affairs and the Office of Development.

### Definitions:

**Alumni:** This is defined as persons who have enrolled at the American University in Cairo and have completed at least one semester of classes and all persons who have received an honorary degree from the university. This includes students enrolled in programs that do not result in a degree, such as study-abroad, special, and diploma programs.

**Active:** Active alumni are those who are not deceased and maintain a current postal or email address.

**Alumni contributions:** All voluntary support – gifts and payments on pledges – from AUC's alumni.

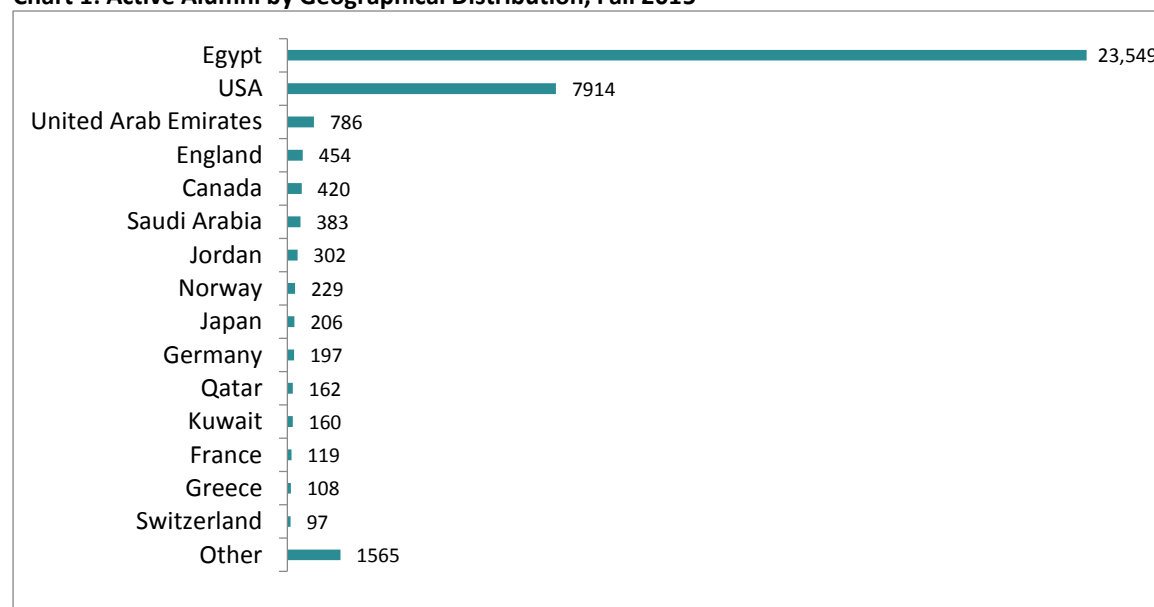
## ACTIVE ALUMNI

**Table 1: Active Alumni, Academic Years 2011 – 2015**

	Academic Year				
	2011	2012	2013	2014	2015
Number of Alumni	30,919	32,145	34,719	35,898	36,651

## GEOGRAPHICAL DISTRIBUTION

**Chart 1: Active Alumni by Geographical Distribution, Fall 2015**

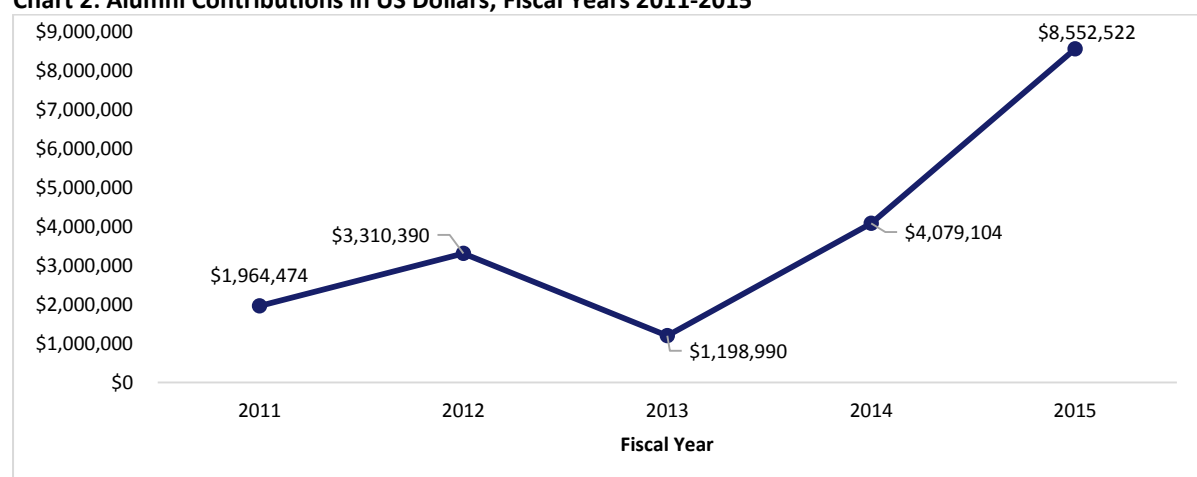


## ALUMNI CONTRIBUTIONS

**Table 2: Alumni Contributions, Fiscal Years 2011-2015**

	FY 2011	FY 2012	FY 2013 <sup>34</sup>	2014	FY 2015
Total Contributions	\$1,964,474	\$3,310,390	\$1,198,990	\$4,079,104	\$8,552,522
Donor Count	1,636	2,467	1,374	1,241	763

**Chart 2: Alumni Contributions in US Dollars, Fiscal Years 2011-2015**



<sup>34</sup> Due to a change in the fiscal year, FY 2013 is only a 10-month period (September 1, 2012 - June 30, 2013).

# Finances

## FINANCES

### Data Sources

**Operating Revenues and Expenditures:** Office of Budget and Financial Planning

**Tuition and Financial Aid:** Office of Student Financial Affairs, Student Accounts

**Exchange Rates:** Student Accounting

**Voluntary Support:** Institutional Advancement

### Definitions

**Academic year:** Fall and Spring semesters of a given academic year

**Fiscal year:** The twelve-month period of July 1 of one year to June 30 of the following year. Prior to FY2013, the fiscal year was September 1 of one year to August 31 of the following year. A change in the fiscal year was made in 2013, which was a transitional 10-month period of September 1, 2012 to June 30, 2013.

#### Operating revenues and expenditures:

##### Operating revenue:

**Academic program tuition:** Undergraduate and graduate tuition

**Endowment income and annual gifts:** Endowments are permanent funds established to provide institutions with a regular source of investment income. A portion of the income earned from endowment fund investments is returned to the endowment so that the endowment can be maintained in real terms to provide a hedge against inflation. Annual giving and AID/ASHA support are two separate sources of funds, where the former represents funds from private sources in the form of gifts from corporations, alumni, supporters, members of the governing board and friends, and the latter is institutional support awarded on a competitive basis by the US government.

**Auxiliaries:** Income from self-supporting activities, including student housing and the AUC Press and Bookstores.

**Adult education:** Income from adult and continuing education services

**Research and sponsorships:** Income that supports specific research activities. This category includes restricted and unrestricted grants and contracts provided by governments, international agencies and private organizations and individuals.

**Miscellaneous:** Includes income generated from other sources and supplementary activities.

##### Operating expenditures:

**Instruction and academic support:** This category includes expenditures for all activities that are part of an institution's instructional programs and for activities that directly support the instruction function, such as the Library, Deans' offices, audiovisual and media services, and others.

**Administration and general:** The expenses of all activities of administrative offices, regardless of executive level, including student services that are not related to instruction and academic support

**Auxiliaries:** Expenditures from self-supporting activities, including student housing and the AUC Press and Bookstores

**Operations and maintenance of plant:** This category includes all expenditures of current operating funds for the operation and maintenance of the university's physical plant. It includes all expenditures for operations established to provide services and maintenance related to grounds and facilities.

**Adult education:** Expenditures related to providing adult and continuing education services

**Research and Sponsorship:** This category includes all expenditures for activities specifically organized to produce research outcomes, whether commissioned by an agency external to the institution or separately budgeted by an organizational unit within the institution.

**Contingency and miscellaneous:** All expenditures that are incurred from other uses and supplementary activities. The contingency fund is used for unplanned expenses.

**Tuition:** The amount of money charged to students for instructional services. Tuition may be charged per term, per course, or per credit. For undergraduate and graduate students, tuition is charged per credit hour.

**Undergraduate financial aid resources:** Federal Work Study, grants, loans to students (government and/or private), assistantships, scholarships, fellowships, tuition waivers, employer aid (tuition reimbursement) and other monies (other than from relatives/friends) provided to students to meet expenses. This excludes loans to parents.

**Scholarships/grants:**

**AUC scholarships:** Endowed scholarships, achievement scholarship, annual gifts and tuition funded grants, awarded by the college, excluding athletic aid and tuition waivers

**Scholarships/grants from external sources:** Scholarships and grants received from outside (private) sources that students bring with them (e.g., Kiwanis, National Merit scholarships). The institution may process paperwork to receive the dollars, but it has no role in determining the recipient or the dollar amount awarded.

**Self-help:**

**Student loans:** Any monies that must be repaid to the lending institution for which the student is the designated borrower. Includes all Title IV subsidized and unsubsidized loans and all institutionally- and privately-sponsored loans. Does not include PLUS and other loans made directly to parents.

**AUC work-study:** Student employment packaged as financial aid. At AUC, this aid is not need-based.

**Other:**

**Athletic awards:** Aid that is awarded based on athletic achievement.

**Tuition waivers:** Tuition waivers are not grants of cash but represent tuition charges waived for approved courses during the semester of the award. For the purposes of this report, tuition waivers include only tuition waived for faculty and staff and their dependents, as an employment benefit. By definition, this is non-need-based, since need is not evaluated, although it might meet need in individual cases.

**Need-based aid:** Aid used to meet financial need. Aid that is non-need-based but that was used to meet need should be counted as need-based aid.

**Non-need-based aid:** Aid that is not awarded based on financial need.

**Total Cash Received:** The actual cash received from pledge payments and outright gifts.

**Total Fund Raised:** The amount of new pledges and outright gifts.

**Alumni:** This is defined as persons who have enrolled at the American University in Cairo and have completed at least one semester of classes and all persons who have received an honorary degree from the university. This includes students enrolled in programs that do not result in a degree, such as study-abroad, special, and diploma programs.



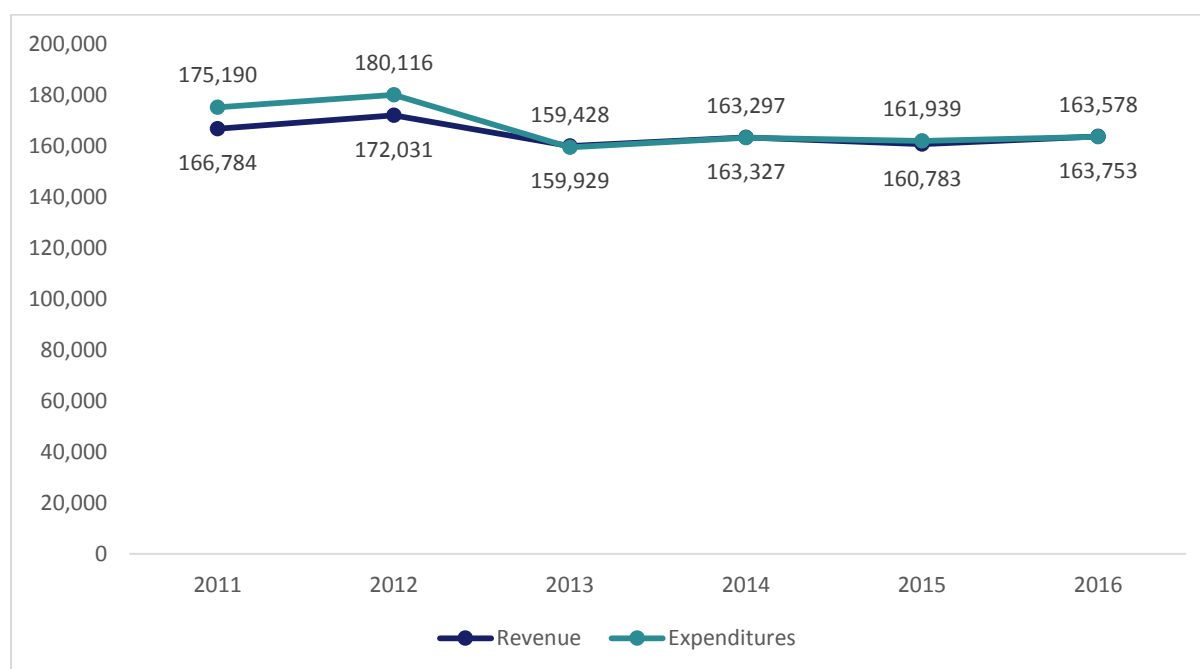
## OPERATING BUDGET

**Table 1: Operating Budget, Fiscal Years 2011- 2016 ('000s USD)**

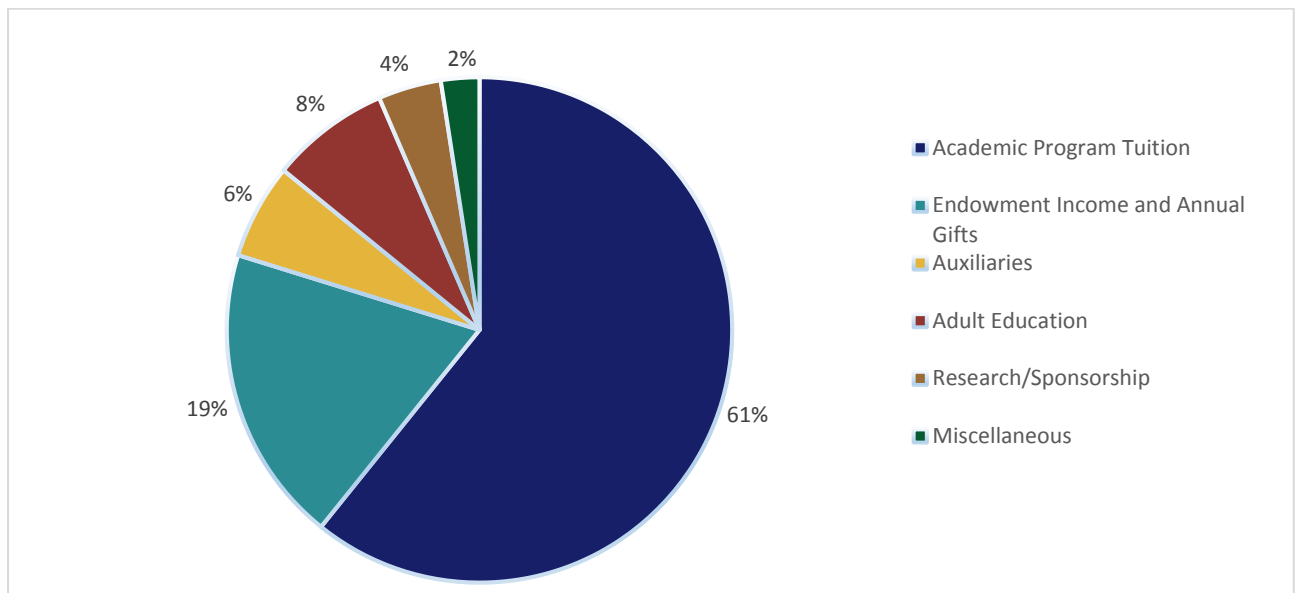
Revenue	2011	2012	2013	2014	2015	2016
Academic Program Tuition	93,379	97,436	100,886	95,176	96,645	99,535
Endowment Income and Annual Gifts	25,546	25,626	24,665	27,844	28,242	31,112
Auxiliaries	9,153	9,443	7,030	12,068	10,890	9,992
Adult Education	17,958	18,550	13,377	13,084	12,502	12,486
Research/Sponsorship	18,318	17,763	10,606	9,923	8,145	6,610
Miscellaneous	2,430	3,213	3,365	5,232	4,359	4,018
<b>Total</b>	<b>166,784</b>	<b>172,031</b>	<b>159,929</b>	<b>163,327</b>	<b>160,783</b>	<b>163,753</b>

Expenditures	2011	2012	2013	2014	2015	2016
Instruction and Academic Support	78,552	81,267	79,251	80,585	77,606	78,647
Administration and General	31,453	33,472	28,236	29,885	30,657	30,583
Auxiliaries	11,045	10,725	7,715	16,102	15,884	15,384
Operations and Maintenance of Plant	27,500	28,601	24,339	19,608	19,142	20,953
Adult Education	13,123	11,853	9,610	9,818	9,375	8,806
Research/Sponsorship	8,672	10,088	5,620	4,559	4,181	3,792
Contingency and Miscellaneous	4,845	4,110	4,657	2,740	5,094	5,414
<b>Total</b>	<b>175,190</b>	<b>180,116</b>	<b>159,428</b>	<b>163,297</b>	<b>161,939</b>	<b>163,578</b>

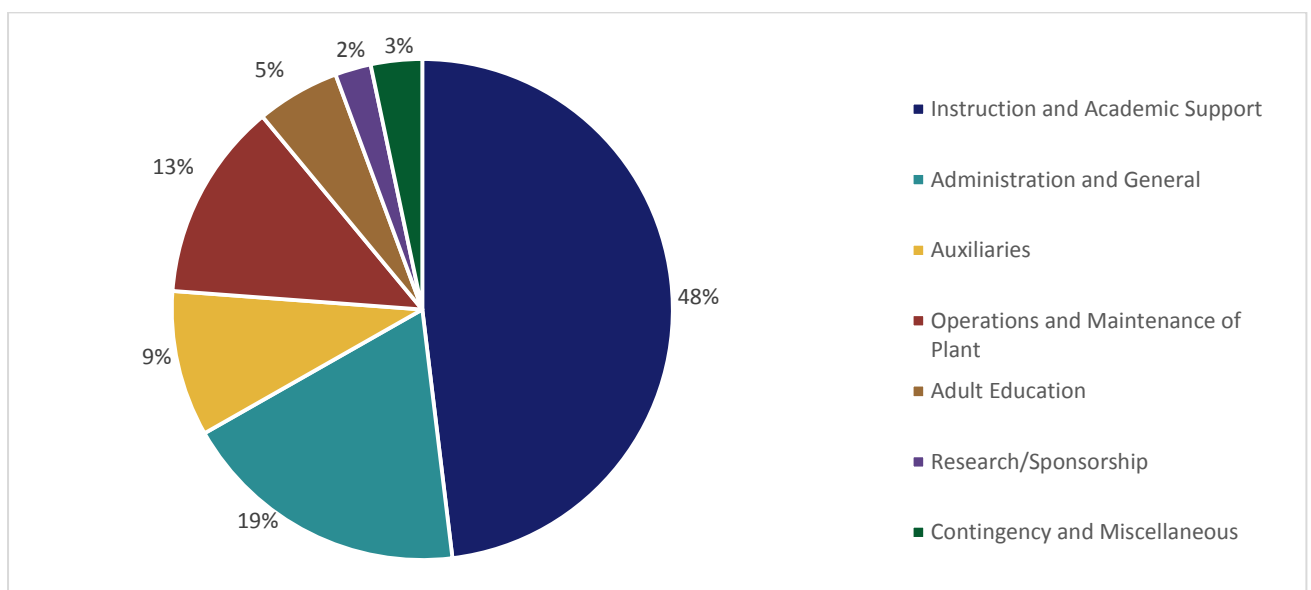
**Chart 1: Operating Budget, Fiscal Years 2011 – 2016 ('000s USD)**



**Chart 2: Distribution of Operating Revenues, Fiscal Year 2016 Budget**



**Chart 3: Distribution of Operating Expenditures, Fiscal Year 2016 Budget**



## UNDERGRADUATE AND GRADUATE TUITION

**Table 2: Undergraduate and Graduate Tuition,<sup>35</sup> Academic Year 2015-2016**

	Egyptians and Qualified Residents (EGP)	Egyptian Rate in USD <sup>36</sup>	International (USD)
<b>Undergraduate Tuition</b>			
12 Credit Hours	128,976	18,432	27,216
15 Credit Hours	132,204	18,893	27,894
18 Credit Hours	161,220	23,040	34,020
<b>Graduate Tuition</b>			
9 Credit Hours -- All	70,956	10,140	20,412
9 Credit Hours -- MBA or LLM	82,908	11,848	20,412
12 Credit Hours -- All	94,608	13,520	27,216
12 Credit Hours -- MBA or LLM	110,544	15,798	27,216

**Table 3: Percent Change in First-Year Undergraduate and Graduate Tuition (EGP)**

	AY2011	AY2012	% +/-	AY2013	% +/-	AY2014	% +/-	AY2015	% +/-	AY2016	% +/-
Undergraduate	96,936	105,672	9.00%	114,360	8.20%	117,000	2.30%	122,850	5.00%	128,976	5.00%
Graduate -- All	50,940	55,530	9.00%	60,048	8.10%	61,434	2.30%	64,506	5.00%	70,596	10.00%
Graduate -- MBA	59,624	64,980	9.00%	70,182	8.00%	71,802	2.30%	75,392	5.00%	82,908	10.00%
Graduate -- LLM	59,624	64,980	9.00%	70,182	8.00%	71,802	2.30%	75,392	5.00%	82,908	10.00%

## UNDERGRADUATE FINANCIAL AID

**Table 4: Undergraduate Financial Aid Resources by Funding Source, Fall 2014**

	Need-Based Aid	Non-Need-Based Aid	Total
<b>Scholarships/Grants</b>			
AUC Scholarships	\$6,447,763	\$4,423,328	\$10,871,091
Scholarships/Grants from External Sources	\$29,602	-	\$29,602
<b>Total Scholarships/Grants</b>	<b>\$6,477,365</b>	<b>\$4,423,328</b>	<b>\$10,900,693</b>
<b>Self-Help</b>			
Student Loans	\$77,461	\$62,368	\$139,829
AUC Work-Study	-	\$209,089	\$209,089
<b>Total Self-Help</b>	<b>\$77,461</b>	<b>\$271,457</b>	<b>\$348,918</b>
<b>Grand Total</b>	<b>\$6,554,826</b>	<b>\$4,694,785</b>	<b>\$11,249,611</b>
<b>Other</b>			
Tuition Waivers <sup>37</sup>	-	\$1,920,818	<b>\$1,920,818</b>
Athletic Awards	-	\$174,108	<b>\$174,108</b>

<sup>35</sup> Tuition rates are denominated in Egyptian pounds and are the published rate, before financial aid, for Egyptian students taking 12 credits per semester at the undergraduate level or nine credits at the graduate level. Fall tuition rates are doubled to provide a figure representing a full year's tuition. This number does not represent average tuition.

<sup>36</sup> Exchange rate 6.9975

<sup>37</sup> Tuition waivers are not grants of cash but represent tuition charges waived for approved courses during the semester of the award. For the purposes of this report, tuition waivers include only tuition waived for faculty and staff and their dependents, as an employment benefit. By definition, this is non-need-based, since need is not evaluated, although it might meet need in individual cases.

## FUNDRAISING

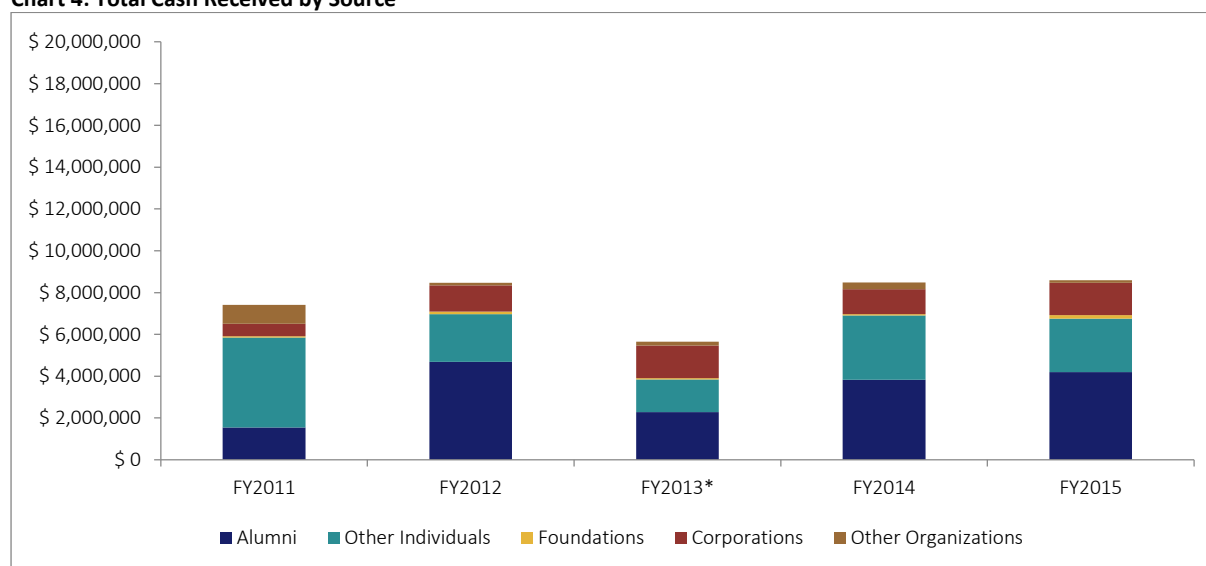
**Table 5: Total Cash Received By Source (Gifts and Pledge Payments)**

Purpose	FY2011	FY2012	FY2013*	FY2014	FY2015
<b>Current Operations</b>					
Alumni	\$882,289	\$3,815,671	\$1,974,705	\$3,471,872	\$2,682,307
Other Individuals	\$1,657,796	\$1,060,603	\$1,305,424	\$1,670,868	\$1,440,046
Foundations	\$63,111	\$112,025	\$53,118	\$60,848	\$157,987
Corporations	\$241,863	\$640,300	\$326,280	\$576,313	\$785,890
Other Organizations	\$160,302	\$118,610	\$90,763	\$160,695	\$124,045
<b>Total</b>	<b>\$3,005,361</b>	<b>\$5,747,208</b>	<b>\$3,750,289</b>	<b>\$5,940,597</b>	<b>\$5,190,276</b>
<b>Endowment</b>					
Alumni	\$442,972	\$673,773	\$205,343	\$38,595	\$1,516,459
Other Individuals	\$257,245	\$224,473	\$230,300	\$516,274	\$109,792
Foundations	\$0	\$0	\$0	\$0	\$20,000
Corporations	\$320,000	\$370,000	\$1,230,677	\$424,370	\$720,002
Other Organizations	\$740,000	\$0	\$100,000	\$150,000	\$0
<b>Total</b>	<b>\$1,760,217</b>	<b>\$1,268,247</b>	<b>\$1,766,319</b>	<b>\$1,129,238</b>	<b>\$2,366,252</b>
<b>Facilities</b>					
Alumni	\$229,839	\$199,131	\$109,804	\$313,762	\$1,000
Other Individuals	\$2,385,465	\$1,000,500	\$25,000	\$895,000	\$1,000,000
Foundations	\$0	\$0	\$0	\$0	\$0
Corporations	\$24,542	\$253,589	\$0	\$199,467	\$30,000
Other Organizations	\$611	\$0	\$0	\$0	\$0
<b>Total</b>	<b>\$2,640,457</b>	<b>\$1,453,219</b>	<b>\$134,804</b>	<b>\$1,408,229</b>	<b>\$1,031,000</b>
<b>Grand Total</b>	<b>\$7,406,036</b>	<b>\$8,468,674</b>	<b>\$5,651,413</b>	<b>\$8,478,065</b>	<b>\$8,587,528</b>

**Table 6: Total Cash Received by Source**

Source	FY2011	FY2012	FY2013*	FY2014	FY2015
<b>Total Giving</b>					
Alumni	\$1,555,100	\$4,688,575	\$2,289,851	\$3,824,229	\$4,199,766
Other Individuals	\$4,300,506	\$2,285,576	\$1,560,724	\$3,082,143	\$2,549,838
Foundations	\$63,111	\$112,025	\$53,118	\$60,848	\$177,987
Corporations	\$586,405	\$1,263,889	\$1,556,957	\$1,200,149	\$1,535,892
Other Organizations	\$900,913	\$118,610	\$190,763	\$310,695	\$124,045
<b>Grand Total</b>	<b>\$7,406,036</b>	<b>\$8,468,674</b>	<b>\$5,651,413</b>	<b>\$8,478,065</b>	<b>\$8,587,528</b>

**Chart 4: Total Cash Received by Source**



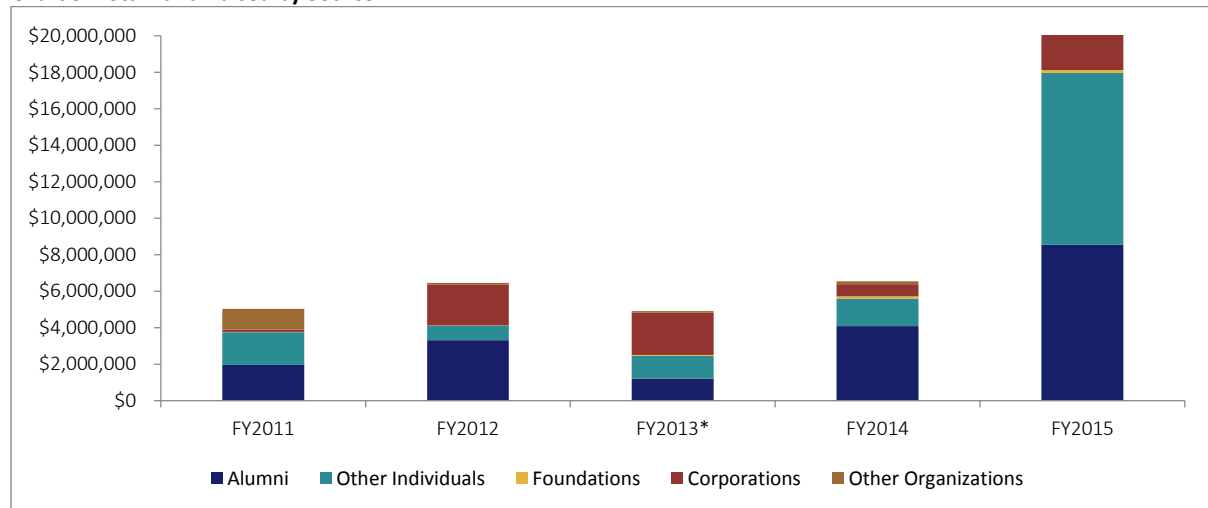
\*Due to a change in the fiscal year, FY 13 is a 10-month period only (September 1, 2012 - June 30, 2013).

**Table 7: Total Fund Raised<sup>38</sup>**

Purpose	FY2011	FY2012	FY2013*	FY2014	FY2015
<b>Current Operations</b>					
Alumni	\$1,023,973	\$2,624,703	\$1,176,064	\$2,515,511	\$2,035,850
Other Individuals	\$1,328,056	\$662,841	\$1,180,328	\$1,373,586	\$1,444,594
Foundations	\$9,111	\$24,025	\$43,118	\$115,827	\$133,046
Corporations	\$127,586	\$816,782	\$280,176	\$667,237	\$2,434,282
Other Organizations	\$155,302	\$118,610	\$90,763	\$160,695	\$124,045
<b>Total</b>	<b>\$2,644,028</b>	<b>\$4,246,960</b>	<b>\$2,770,449</b>	<b>\$4,832,856</b>	<b>\$6,171,817</b>
<b>Endowment</b>					
Alumni	\$913,101	\$685,688	\$22,925	\$1,563,593	\$6,516,672
Other Individuals	\$457,248	\$127,278	\$53,369	\$142,217	\$7,973,490
Foundations	\$0	\$0	\$0	\$0	\$20,000
Corporations	\$0	\$1,400,000	\$2,044,469	\$0	\$500,000
Other Organizations	\$990,000	\$0	\$0	\$0	\$0
<b>Total</b>	<b>\$2,360,349</b>	<b>\$2,212,966</b>	<b>\$2,120,763</b>	<b>\$1,705,810</b>	<b>\$15,010,161</b>
<b>Facilities</b>					
Alumni	\$27,400	\$0	\$0	\$0	\$0
Other Individuals	\$3,200	\$0	\$25,000	\$0	\$0
Foundations	\$0	\$0	\$0	\$0	\$0
Corporations	\$0	\$0	\$0	\$0	\$0
Other Organizations	\$611	\$0	\$0	\$0	\$0
<b>Total</b>	<b>\$31,211</b>	<b>\$0</b>	<b>\$25,000</b>	<b>\$0</b>	<b>\$0</b>
<b>Grand Total</b>	<b>\$5,035,587</b>	<b>\$6,459,925</b>	<b>\$4,916,212</b>	<b>\$6,538,666</b>	<b>\$21,181,978</b>

**Table 8: Total Fund Raised by Source**

Source	FY2011	FY2012	FY2013*	FY2014	FY2015
<b>Total Giving</b>					
Alumni	\$1,964,474	\$3,310,390	\$1,198,990	\$4,079,104	\$8,552,522
Other Individuals	\$1,788,503	\$790,119	\$1,258,697	\$1,515,803	\$9,418,083
Foundations	\$9,111	\$24,025	\$43,118	\$115,827	\$153,046
Corporations	\$127,586	\$2,216,782	\$2,324,644	\$667,237	\$2,934,282
Other Organizations	\$1,145,913	\$118,610	\$90,763	\$160,695	\$124,045
<b>Grand Total</b>	<b>\$5,035,587</b>	<b>\$6,459,925</b>	<b>\$4,916,212</b>	<b>\$6,538,666</b>	<b>\$21,181,978</b>

**Chart 5: Total Fund Raised by Source**

\*Due to a change in the fiscal year, FY 13 is a 10-month period only (September 1, 2012 - June 30, 2013).

<sup>38</sup> There were some amendment to Yousef Jameel pledge of \$13,854,000 booked in FY2012 to align with the Budget office figures (The pledge was reversed and re-entered its installments as outright gifts as we receive them), all pledges were included in the raised figures as previously used to exclude phonathon pledges

## **Campus Space, Facilities, and Services**

## UTILITY USAGE FOR THE NEW CAIRO CAMPUS

Table 1: Water Consumption, New Cairo Campus (Cubic Meters)<sup>39</sup>

	AY 2014 <sup>40</sup>	AY 2015
<b>Buildings Water Consumption</b>	117,684.56	118,280.37
<b>Cooling Tower Water Consumption</b>	94,607.21	106,030.00
<b>Total</b>	<b>212,291.77</b>	<b>224,310.37</b>
<b>Irrigation Water</b>		
Domestic	8,797.00	0.00
Treated	307,917.00	321,103.00
<b>Total</b>	<b>316,714.00</b>	<b>321,103.00</b>
<b>Total Water Used</b>		
Domestic	221,075.78	224,310.00
Treated	307,917	321,103.00
<b>Total</b>	<b>528,992.78</b>	<b>545,413.00</b>

Table 2: Energy Consumption (Kilowatt Hours)

	Year 1 <sup>41</sup>	Year 2 <sup>42</sup>	Year 3 <sup>43</sup>	Year 4 <sup>44</sup>
<b>Chilled, Heated and Domestic Water Energy Consumption</b>				
Chilled Water	22,596,743.99	19,104,571.77	18,416,366.92	18,762,892.00
Hot Water	12,200,398.73	7,937,148.95	8,176,562.00	9,054,520.00
<b>Total</b>	<b>34,797,142.72</b>	<b>27,041,720.72</b>	<b>26,592,928.92</b>	<b>27,817,412.00</b>
<b>New Campus Electricity</b>	36,848,000.00	33,035,200.00	31,186,200.00	31,370,000.00
<b>Natural Gas for Domestic and Lab Use</b>	208,391.97	166,765.09	149,536.91	112,373.28
<b>Electricity Consumption, Tahrir Campus</b>	9,198,657.00	8,896,379.00	8,359,118.00	7,833,665.00
<b>Total (KWhr.)</b>	<b>81,052,191.69</b>	<b>69,140,064.81</b>	<b>66,287,783.83</b>	<b>67,133,450.28</b>

<sup>39</sup> Source: Office of Sustainability (Tables 1-2)

<sup>40</sup> AY 2014 = September 1, 2013 to August 31, 2014

<sup>41</sup> Year 1: September 1, 2011 – August 31, 2012

<sup>42</sup> Year 2: September 1, 2012 – August 31, 2013

<sup>43</sup> Year 3: September 1, 2013 – August 31, 2014

<sup>44</sup> Year 4: September 1, 2014 – August 31, 2015

## **CAMPUS SUSTAINABILITY**

In September 2011, AUC affirmed its commitment to environmental sustainability and reducing its carbon footprint by creating the Office of Sustainability. This office is responsible for addressing AUC's environmental challenges, including climate change, resource scarcity, pollution and waste management, in ways that also improve the University's operations, strengthen its finances and enhance its reputation. Since that time, the Office of Sustainability has worked with campus partners to document and address issues related to AUC's environmental impact. The Office of Sustainability also works closely with RISE to encourage sustainable practices among the student body and in campus life.

From 2011 to 2015, AUC reduced its energy consumption university-wide by 35%, and from 2012 to 2015, AUC reduced its total water consumption at the New Cairo campus by more than 20%.

### **Campus Recycling**

In Spring 2013, AUC launched a recycling program, installing sorting stations for campus waste as a first step in developing a trash management system on campus. There are thirteen sorting stations installed on campus, originally installed in February 2013. By early March 2014, the University had also installed 30 mini sorting stations.

### **Carbon Footprint Report**

In 2012, the Office of Sustainability and the university's Desert Development Center, now the Research Institute for Sustainable Environments, developed the AUC Carbon Footprint Report, the first attempt in the Middle East and North Africa region to measure a university's carbon footprint. In April 2015, AUC published its third report, including seven sets of specific recommendations to reduce AUC's carbon footprint. For these efforts, AUC was featured in the UNEP (United Nations Environmental Program) Green Metric Toolkit as a global example of a green, low carbon university – one of only two universities in Africa.

More information is available on the AUC Office of Sustainability's website at

<http://www.aucegypt.edu/about/sustainability/Pages/default.aspx>.

### **Universities Indonesia (UI) Green metric World University Ranking**

The UI Green metric World University Ranking was established in 2010 as an online "green" ranking for universities throughout the world, with participation from universities in 35 countries. In 2013, AUC, in its first year of participation, was ranked 101 out of 300 universities. In addition, AUC scored 25th in the energy and climate change category, the most heavily weighted metric which looked at efforts to reduce energy use and mitigate climate change, and 39<sup>th</sup> in water usage and conservation. More information is available at <http://greenmetric.ui.ac.id/id/page/ranking-2013>.

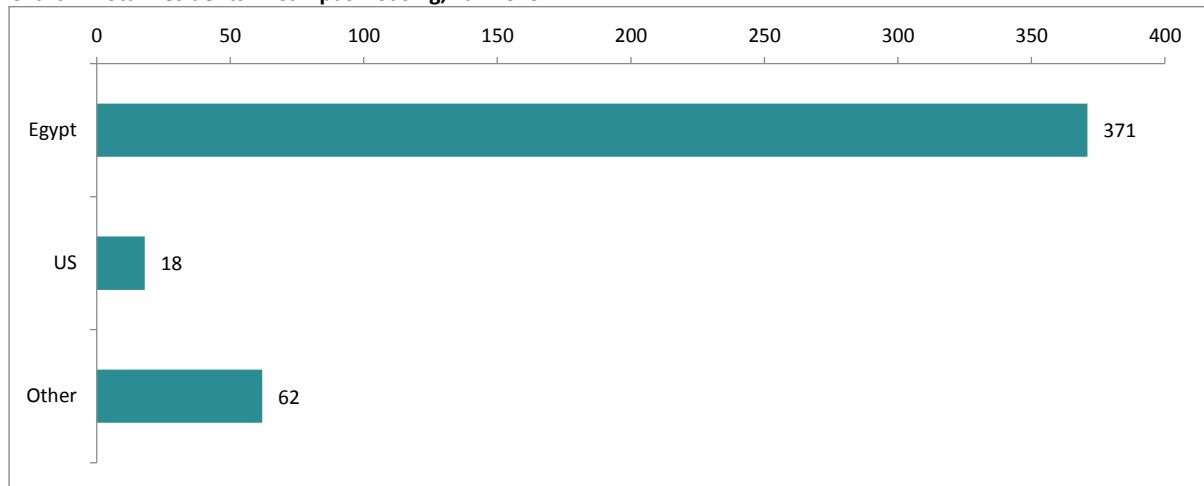


## STUDENT HOUSING CAPACITY

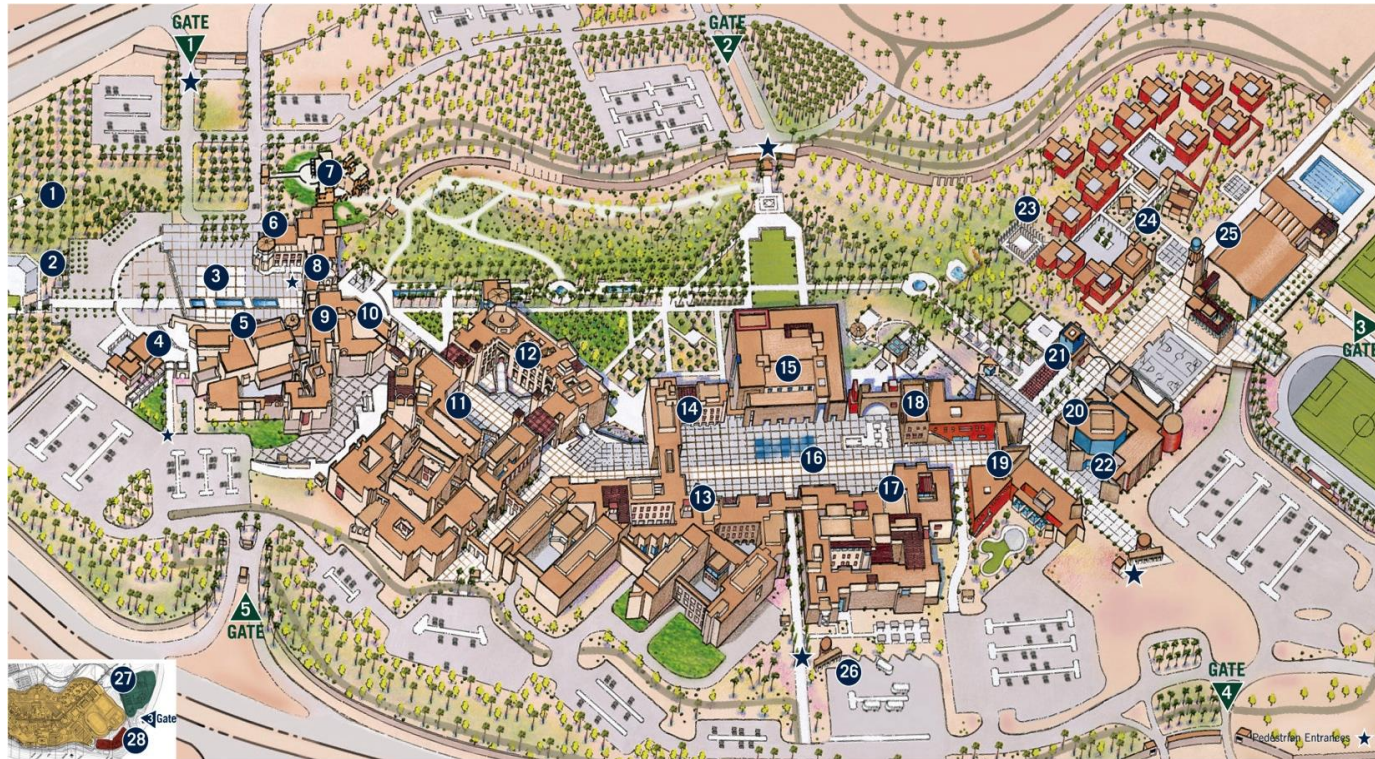
**Table 3: Total Residents in Campus Housing by Nationality and Housing Location, Fall 2015**

	Egypt	US	Other	Total
Undergraduate	359	5	52	<b>419</b>
Graduate	12	6	3	<b>21</b>
Study Abroad/Arabic Language Institute	0	7	7	<b>11</b>
<b>Total</b>	<b>371</b>	<b>18</b>	<b>62</b>	<b>451</b>

**Chart 1: Total Residents in Campus Housing, Fall 2015**



## CAMPUS MAP



### Buildings and Open Spaces Map Key

Abdul Latif Jameel Hall (JAMEEL)	17
Administration Building	12
Arnold Pavilion	19
AUC Portal	8
Allam Amphitheatre, The	2
Bartlett Plaza	16
Bassily Auditorium	20
Bruce L. Ludwig Family Square	3
Bus Terminal	26
Campus Development Building	28

Campus Center	18
Center for the Arts (AUCCA)	5
Conference and Visitor Center	22
Dr. and Mrs. Elias Hebeika Building	4
Dr. Hamza AlKholi Information Center	6
Graduate School of Education	9
Hatem and Janet Mostafa	14
Core Academic Center, The (HATEM)	15
Library	23
Memory Wall Grove	7

Moataz Al Alfi Hall	21
Paul and Charlotte Corddry Park	1
Physical Plant Compound	27
Prince Alwaleed Bin Talal Bin	11
Abdulaziz Al Saud Hall (WALEED)	10
Research Centers Building	13
School of Sciences and Engineering (SSE)	25
Sports Center	24
University Residences	7
Watson House	23

### AUC OFFICES AND DEPARTMENTS

<b>A</b>	Academic Advising Center 14
	Accounting Department 17
	Admissions 6
	Alumni and Trustee Affairs 12
	Americana Food Court 18
	Arab and Islamic Civilizations 11
	Arabic Language Institute 11
	Arts 5
	Athletics Office 25
	AUC Forum 10
<b>B</b>	Bank (CIB) 12
	Biology 13
	Bookstore 18
<b>C</b>	Campus Development 28
	Campus Shop 18
	Caravan (student newspaper) 17
	Career Center 19
	Center for Arabic Study Abroad 11
	Center for Learning and Teaching 15
	Chemistry 13
	Citadel Capital Financial Services Center 17
	Classroom Technologies and Media Services 15
	Clinic 19
	Communications 12
	Computer Science and Engineering 13
	Construction and Architectural Engineering 13
	Cosy Center 10, 18
	Core Curriculum 14
	Cynthia Nelson Institute for Gender and Women's Studies 10
<b>D</b>	Day Care Center 19
	Desert Development Center 28
	Development 12
<b>E</b>	Economic and Business History Research Center 10
	Economics 17
	El-Khazindar Business Research and Case Center 17
	Electronics Engineering 13
	Engineering and Science Services 13
	English and Comparative Literature 11
	English Language Institute 11
	Environmental Health and Safety 27
	Equal Opportunity and Affirmative Action 12
<b>F</b>	Faculty Housing 27
	Faculty Lounge and Services 18
	First-Year Experience and Leadership Institute 18
<b>G</b>	Gerhart Theater, The 5
	Graduate School of Education 9
	Graduate Student Services 20
<b>H</b>	History 11
	Human Resources 12
<b>I</b>	Institutional Research 12
	International Executive Education Institute 17
	International Programs 19
	International Student Affairs 18
<b>J</b>	John D. Gerhart Center for Philanthropy and Civic Engagement 10
	Journalism and Mass Communication 17
<b>K</b>	Kamal Adham Center for Television and Digital Journalism 17
<b>L</b>	Law Department 17
	Leadership for Education and Development (LEAD) Program 19
	Libraries and Learning Technologies 15
<b>M</b>	Malak Gabr Arts Theater 5
	Management 17
	Mansour Group Lecture Hall 14
	Mary Cross Lecture Hall 22
	Mathematics and Actuarial Science 13
	Mechanical Engineering 13
	Medical Services 19
	Middle East Studies 11
	Model United Nations / Model Arab League 11
	Mohamed Shafik Gabr Lecture Hall 22
<b>O</b>	Ombuds 15
<b>P</b>	Petroleum and Energy Engineering 13
	Philosophy 11
	Photographic Gallery 17
	Physical Plant 27
	Physics 13
	Political Science 11
	President's Office 12
	Prince Alwaleed American Studies Center 10
	Provost's Office 12
	Public Policy and Administration 17
<b>R</b>	Rare Books and Special Collections Library 15
	Registrar 12
	Residential Life 24
	Rhetoric and Composition 11
<b>S</b>	School of Business 17
	School of Continuing Education 4
	School of Global Affairs and Public Policy 17
	School of Humanities and Social Sciences 11
	School of Sciences and Engineering 13
	Security 18
	Senate Office 10
	Sharjah Art Gallery 5
	Social Research Center 10
	Sociology, Anthropology, Psychology and Egyptology 11
	Sponsored Programs 12
	Student Accounting 12
	Student Development 18
	Student Financial Affairs 6
	Student Life 18
	Student Service Center 6
	Student Support 19
	Supermarket (Souq Market) 25
<b>T</b>	Textbook Store 18
	Theban Mapping Project 11
	Training and Development 12
	Travel Office 22
<b>U</b>	University Academic Computing Technologies 15
	University Events 22
	University Information Systems 14
	University Technology Infrastructure 14
	Utility Plant 27
<b>Y</b>	Yousef Jameel MBA Fellows Program 17
	Yousef Jameel Science and Technology Research Center 13
<b>W</b>	Welcome Lounge 5



THE AMERICAN UNIVERSITY IN CAIRO

Office of Data Analytics and Institutional Research

tel 20.2.2615.2231 • [dair@aucegypt.edu](mailto:dair@aucegypt.edu)

[www.aucegypt.edu](http://www.aucegypt.edu)